



SPDES Permit No. NY0028410

Long Term Control Plan Semi-Annual Status Report
Reporting Period: *July through December 2014*

Amended Administrative Order
CWA-02-2014-3033
(Amends CWA-02-2012-3024)

MARCH 2015

BUFFALO SEWER AUTHORITY

Long Term Control Plan Semi-Annual Status Report **Reporting Period: *July through December 2014***

Table of Contents

1. INTRODUCTION
2. REQUIREMENTS DUE IN REPORTING PERIOD
3. WORK COMPLETED IN CURRENT AND PROJECTION OF WORK TO BE PERFORMED IN NEXT REPORTING PERIODS
4. IMPLEMENTATION ISSUES
5. CHANGES IN KEY PERSONNEL
6. PUBLIC MEETINGS
7. MODEL MODIFICATIONS
8. CERTIFICATION STATEMENT

ATTACHMENT:

- A. Work Completed in Current Period/ Projection of Work to be Performed in Next Reporting Period
- B. Detailed Project Descriptions
- C. Materials from Public Meetings
- D. Monthly Monitoring Reports (USEPA copy only)
- E. Model Modifications

1. INTRODUCTION

The Buffalo Sewer Authority (Authority) received approval of its Long Term Control Plan (LTCP) from the United States Environmental Protection Agency (USEPA) and New York State Department of Environmental Conservation (NYSDEC) on March 18, 2014. The Authority entered into an Administrative Order, as amended on April 16, 2014 (herein after referred to as the AO), with the USEPA. This AO establishes a schedule for implementation of the Authority's LTCP, approved by the USEPA and NYSDEC.

The AO in part requires that the Authority submit written Semi-Annual Status Reports to the USEPA and NYSDEC by September 1st for current year January 1– June 30 reporting period, and March 1st for the previous calendar year July 1 – December 31 reporting period. The AO requires that the following be provided in each Semi-Annual Status Report:

- The project milestones, deadlines and other terms that the Authority is required to meet since the date of the last Semi-Annual Status Report, whether and to what extent the Authority has met those requirements, and the reason for any anticipated delays and/or noncompliance.
- A general description of the work completed during the reporting period and the applicability of the work to meet indicated design criteria, as well as the projection of work to be performed during the next reporting period and any anticipated delays for the upcoming work. Any changes in key personnel must also be noted.
- Enclosure of public meeting (if held) materials including: advertisements, handouts, formal meeting notes, and a summary of the meeting.
- Copies (to USEPA only) of all monthly monitoring reports or other reports pertaining to CSOs and bypasses that BSA submitted to the NYSDEC during the reporting period.

This report covers July through December 2014, which serves as Semi-Annual Report No. 2.

2. REQUIREMENTS DUE IN REPORTING PERIOD

The following table summarizes the deadlines and other terms of the Amended AO that the BSA has been required to meet for this reporting period. The table also provides whether and to what extent the Authority has met those requirements, and the reason for any anticipated delays and/or noncompliance.

Requirement	Description	Deadline	Compliance Status
Semi-Annual Status Reports	Submit Semi-Annual Status reports no later than March 1 st (reporting period July 1 through December 31 of previous year) and September 1 st (January 1 through June 30 of current year)	March 1 st September 1 st	This report serves as the March 1, 2015 Semi-Annual Status Report submittal.

3. WORK COMPLETED IN CURRENT REPORTING PERIOD AND PROJECTION OF WORK TO BE PERFORMED NEXT REPORTING PERIOD

A general description of the work completed on LTCP projects during the reporting period (July 1 through December 31, 2014) and the work projected to be performed during the next reporting period (January 1 through June 30, 2015) is provided in Attachment A. **Work to be completed after the current or next reporting period has been grayed out.**

As agreed at October 21, 2014 meeting between the BSA and the agencies, a more detailed description of each project including the location and the goal to be achieved through each project is provided in Attachment B.

4. IMPLEMENTATION ISSUES

As noted in the previous Semi-Annual Report: on the Bird and Lang RTC Projects there were construction delays aggregating several weeks due to inclement weather, easement acquisition, submittal and fabrication delays for the actuators and stems, and a delayed radio path study.

An additional delay has occurred due to a late determination by National Grid that the existing utility poles which were to have provided power to the projects will need to be replaced due to their age (a six week process which has been further complicated by the large snow pack and frigid temperatures). Additionally, legal issues relating to obtaining an easement have necessitated rerouting of power for the Bird Avenue site between the project and the utility pole. Once these projects are energized, optimization will commence. It should be noted that the delay in completing this project is not expected to cause delays on any future projects including other RTC Projects.

In order to expedite construction, the Smith Street storage project has been separated into an in-line storage project and a partial sewer separation project. The completion of engineering for the partial sewer separation project is expected to be completed prior to the March 18, 2015 deadline set forth in the Administrative Order. The completion of the engineering for the Smith Street in-line storage project however is expected to be delayed until after March 18, 2015, but before the end of the next reporting period on June 30, 2015. Completion of construction of the overall Smith Street storage project is still expected by March 18, 2017.

5. CHANGES IN KEY PERSONNEL

Julie Barrett-O'Neill, Esq. was appointed by the BSA as General Counsel on December 8, 2014. Rosaleen B. Nogle, P.E. was appointed Associate Engineer on January 6, 2014.

6. PUBLIC MEETINGS

The BSA held a Stakeholder Panel meeting on August 7, 2014 to present the work completed since the submittal of the April 2012 Draft LTCP. Materials from this meeting are provided in Attachment C.

7. MODEL MODIFICATIONS

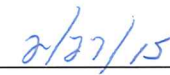
The process of converting the hydraulic model from XP-SWMM to PC-SWMM began during this period. To date the initial conversion has been completed with minor adjustments ongoing to account for differences in modeling techniques between the two versions. We anticipate that the model will be fully converted during the next period. Up to that point, BSA will continue to utilize the XP-SWMM model. Additionally, as projects progress and new field survey data is collected (e.g., weir elevations), the model will be updated with the new information and documented in the Semi-Annual Status Reports.

8. CERTIFICATION STATEMENT

"I certify under penalty of law that this document and all attachments were prepared under my direction or supervision in accordance with a system designed to assure that qualified personnel properly gather and evaluate the information submitted. Based on my inquiry of the person or persons who manage the system, or those persons directly responsible for gathering the information, the information submitted is, to the best of my knowledge and belief, true, accurate, and complete. I am aware that there are significant penalties for submitting false information, including the possibility of fine and imprisonment for knowing violations."



David P. Comerford, General Manager



Date

Attachment A to the Semi-Annual Status Report: March 2015

Work Completed in Current Period/ Projection of Work to be Performed in Next Reporting Period

Project Name	Project Milestone	AO Project Deadline	Actual Completion Dates	Project Status
<u>Phase I Projects</u>				
Bird/Lang RTC Projects	Construction Start	3/17/2014	2/24/2014	Complete
	Completion Date	9/2/2014		Projected to be Completed During Next Reporting Period; Completion has been delayed; See 4.IMPLEMENTATION ISSUES
	Operations/ Optimization (RTC)	9/3/2014 – 9/3/15		Projected to be Started During Next Reporting Period ; Operations/optimization to commence following construction completion; See 4.IMPLEMENTATION ISSUES
<u>Foundation Projects</u>				
Foundation 1 - Smith Street Storage	Engineering Start	3/18/2014	Prior to 1/1/2014	Complete
	Engineering Completion	3/18/2015		Projected to be Completed During Next Reporting Period (Project has been split into a partial separation project, the engineering for which will be completed by 3/18/15 and an in-line storage project, the engineering for which is expected to be completed before June 30, 2015, but after March 18, 2015).
	Notice to Proceed	3/18/2015		Projected to be Completed During Next Reporting Period
	Substantial Completion	3/18/2017		
Foundation 2 - SPP Optimization (20 projects)	Engineering Start	3/1/2014	Prior to 1/1/2014	Complete
	Engineering Completion	3/18/2015		Projected to be Completed During Next Reporting Period
	Notice to Proceed	3/1/2014	Prior to 1/1/2014	Complete
	Substantial Completion	3/18/2017		
SPP 180 Optimization	Engineering Start	---	Prior to 1/1/2014	Complete
	Engineering Completion	---	Prior to 1/1/2014	Complete
	Notice to Proceed	---	Prior to 1/1/2014	Complete
	Substantial Completion	3/18/2017	Prior to 1/1/2014	Complete
SPP 331 Optimization	Engineering Start	---	Prior to 1/1/2014	Complete
	Engineering Completion	3/18/2015		Projected to be Completed During Next Reporting Period
	Notice to Proceed	---		
	Substantial Completion	3/18/2017		

Project Name	Project Milestone	AO Project Deadline	Actual Completion Dates	Project Status
<i>SPP 036 Optimization</i>	Engineering Start	---	Prior to 1/1/2014	Complete
	Engineering Completion	3/18/2015	1/20/2014	Complete
	Notice to Proceed	---	5/30/2014	Complete
	Substantial Completion	3/18/2017	8/4/2014	Complete
<i>SPP 217 Optimization</i>	Engineering Start	---	Prior to 1/1/2014	Complete
	Engineering Completion	3/18/2015		Projected to be Completed During Next Reporting Period
	Notice to Proceed	---		
	Substantial Completion	3/18/2017		
<i>SPP 318 Optimization</i>	Engineering Start	---	Prior to 1/1/2014	Complete
	Engineering Completion	3/18/2015		Projected to be Completed During Next Reporting Period
	Notice to Proceed	---		
	Substantial Completion	3/18/2017		
<i>SPP 097A Optimization</i>	Engineering Start	---	3/1/2014	Complete
	Engineering Completion	3/18/2015		Projected to be Completed During Next Reporting Period
	Notice to Proceed	---		
	Substantial Completion	3/18/2017		
<i>SPP 122 Optimization</i>	Engineering Start	---	Prior to 1/1/2014	Complete
	Engineering Completion	3/18/2015	Prior to 1/1/2014	Complete
	Notice to Proceed	---	Prior to 1/1/2014	Complete
	Substantial Completion	3/18/2017	Prior to 1/1/2014	Complete
<i>SPP 163 Optimization</i>	Engineering Start	---	3/1/2014	Complete
	Engineering Completion	3/18/2015	11/25/2014	Complete
	Notice to Proceed	---		Projected to be Completed During Next Reporting Period
	Substantial Completion	3/18/2017		
<i>SPP 165 Optimization</i>	Engineering Start	---	Prior to 1/1/2014	Complete
	Engineering Completion	3/18/2015	Prior to 1/1/2014	Complete
	Notice to Proceed	---	Prior to 1/1/2014	Complete
	Substantial Completion	3/18/2017	Prior to 1/1/2014	Complete

Project Name	Project Milestone	AO Project Deadline	Actual Completion Dates	Project Status
<i>SPP 165A Optimization</i>	Engineering Start	---	Prior to 1/1/2014	Complete
	Engineering Completion	3/18/2015	4/4/2014	Complete
	Notice to Proceed	---	7/25/2014	Complete
	Substantial Completion	3/18/2017	11/3/2014	Complete
<i>SPP 178 Optimization</i>	Engineering Start	---	Prior to 1/1/2014	Complete
	Engineering Completion	3/18/2015	Prior to 1/1/2014	Complete
	Notice to Proceed	---	Prior to 1/1/2014	Complete
	Substantial Completion	3/18/2017	Prior to 1/1/2014	Complete
<i>SPP 335B Optimization</i>	Engineering Start	---	Prior to 1/1/2014	Complete
	Engineering Completion	---	Prior to 1/1/2014	Complete
	Notice to Proceed	---	Prior to 1/1/2014	Complete
	Substantial Completion	3/18/2017	Prior to 1/1/2014	Complete
<i>SPP 336A Optimization</i>	Engineering Start	---	1/1/2014	Complete
	Engineering Completion	---		Projected to be Completed During Next Reporting Period
	Notice to Proceed	---		
	Substantial Completion	3/18/2017		
<i>SPP 341A Optimization</i>	Engineering Start	---	1/1/2014	Complete
	Engineering Completion	---		Field conditions may require modifications to planned optimization.
	Notice to Proceed	---		
	Substantial Completion	3/18/2017		
<i>SPP 342B Optimization</i>	Engineering Start:	---	Prior to 1/1/2014	Complete
	Engineering Completion	---	Prior to 1/1/2014	Complete
	Notice to Proceed	---	Prior to 1/1/2014	Complete
	Substantial Completion	3/18/2017	Prior to 1/1/2014	Complete
<i>SPP 001 Optimization</i>	Engineering Start:	---	Prior to 1/1/2014	Complete
	Engineering Completion	---	3/27/2014	Complete
	Notice to Proceed	---	6/16/2014	Complete
	Substantial Completion	3/18/2017	12/12/2014	Complete

Project Name	Project Milestone	AO Project Deadline	Actual Completion Dates	Project Status
<i>SPP 183 Optimization</i>	Engineering Start	---	Prior to 1/1/2014	Complete
	Engineering Completion	---	Prior to 1/1/2014	Complete
	Notice to Proceed	---	Prior to 1/1/2014	Complete
	Substantial Completion	3/18/2017	Prior to 1/1/2014	Complete
<i>SPP 283 Optimization</i>	Engineering Start	---	Prior to 1/1/2014	Complete
	Engineering Completion	---	Prior to 1/1/2014	Complete
	Notice to Proceed	---	Prior to 1/1/2014	Complete
	Substantial Completion	3/18/2017	Prior to 1/1/2014	Complete
<i>SPP 211 Optimization</i>	Engineering Start	---	Prior to 1/1/2014	Complete
	Engineering Completion	---	Prior to 1/1/2014	Complete
	Notice to Proceed	---	Prior to 1/1/2014	Complete
	Substantial Completion	3/18/2017	Prior to 1/1/2014	Complete
Foundation 3 - Remaining RTC (14 sites)	Engineering Start	3/18/2016		
	Notice to Proceed	3/18/2017		
	Engineering Completion	3/18/2023		
	Substantial Completion	3/18/2024		
<i>Hertel Northwest In-Line Storage</i>	Engineering Start	---		
	Engineering Completion	---		
	Notice to Proceed	---		
	Substantial Completion	3/18/2024		
<i>Hertel South In-Line Storage</i>	Engineering Start	---		
	Engineering Completion	---		
	Notice to Proceed	---		
	Substantial Completion	3/18/2024		
<i>Hertel Northeast In-Line Storage</i>	Engineering Start	---		
	Engineering Completion	---		
	Notice to Proceed	---		
	Substantial Completion	3/18/2024		

Project Name	Project Milestone	AO Project Deadline	Actual Completion Dates	Project Status
<i>Bird East In-Line Storage</i>	Engineering Start	---		
	Engineering Completion	---		
	Notice to Proceed	---		
	Substantial Completion	3/18/2024		
<i>East Ferry In-Line Storage</i>	Engineering Start	---		
	Engineering Completion	---		
	Notice to Proceed	---		
	Substantial Completion	3/18/2024		
<i>Colorado In-Line Storage</i>	Engineering Start	---		
	Engineering Completion	---		
	Notice to Proceed	---		
	Substantial Completion	3/18/2024		
<i>North Bailey In-Line Storage</i>	Engineering Start	---		
	Engineering Completion	---		
	Notice to Proceed	---		
	Substantial Completion	3/18/2024		
<i>South Bailey In-Line Storage</i>	Engineering Start	---		
	Engineering Completion	---		
	Notice to Proceed	---		
	Substantial Completion	3/18/2024		
<i>Roslyn In-Line Storage</i>	Engineering Start	---		
	Engineering Completion	---		
	Notice to Proceed	---		
	Substantial Completion	3/18/2024		
<i>Kay In-Line Storage</i>	Engineering Start	---		
	Engineering Completion	---		
	Notice to Proceed	---		
	Substantial Completion	3/18/2024		

Project Name	Project Milestone	AO Project Deadline	Actual Completion Dates	Project Status
<i>Amherst Quarry Off-Line Storage</i>	Engineering Start	---		
	Engineering Completion	---		
	Notice to Proceed	---		
	Substantial Completion	3/18/2024		
<i>Fillmore North In-Line Storage</i>	Engineering Start	---		
	Engineering Completion	---		
	Notice to Proceed	---		
	Substantial Completion	3/18/2024		
<i>Gibson CSO Line Storage</i>	Engineering Start	---		
	Engineering Completion	---		
	Notice to Proceed	---		
	Substantial Completion	3/18/2024		
<i>Montgomery CSO Line Storage</i>	Engineering Start	---		
	Engineering Completion	---		
	Notice to Proceed	---		
	Substantial Completion	3/18/2024		
Foundation 4 - Hamburg Drain Optimizations	Engineering Start	3/18/2015	Prior to 1/1/2014	Complete
	Engineering Completion	3/18/2017		
	Notice to Proceed	3/18/2016		
	Substantial Completion	3/18/2018		
Foundation 4 - Hamburg Drain Storage	Engineering Start	3/18/2028		
	Engineering Completion	3/18/2030		
	Notice to Proceed	3/18/2030		
	Substantial Completion	3/18/2032		
<u>WWTP</u>				
WWTP Improvement Project Alternative C2	Engineering Start	3/18/2015		Projected to be Completed During Next Reporting Period
	Engineering Completion	3/18/2019		
	Notice to Proceed	3/18/2017		
	Substantial Completion	3/18/2022		

Project Name	Project Milestone	AO Project Deadline	Actual Completion Dates	Project Status
<u>Green Infrastructure Projects</u>				
Green 1 - Pilot Projects – 267-acres of GI control	Engineering Start	3/1/2014	Prior to 1/1/2014	Complete
	Engineering Completion	3/18/2016		
	Substantial Completion	3/18/2018		
<i>2001-2013 Demolitions</i>	Engineering Start	---	Prior to 1/1/2014	Complete
	Engineering Completion	---	Prior to 1/1/2014	Complete
	Substantial Completion	3/18/2018	See GI Master Plan Appendix 7-1	Complete
<i>2014-2018 Demolitions</i>	Engineering Start	---	Prior to 1/1/2014	Complete
	Engineering Completion	---		
	Substantial Completion	3/18/2018		
<i>PUSH Blue Projects</i>	Engineering Start	---	Prior to 1/1/2014	Complete
	Engineering Completion	---		
	Substantial Completion	3/18/2018		
<i>Carlton Street Porous Asphalt</i>	Engineering Start	---	Prior to 1/1/2014	Complete
	Engineering Completion	---	Prior to 1/1/2014	Complete
	Substantial Completion	3/18/2018	7/25/2014	Complete
<i>Fillmore Avenue Porous Parking Lots and Green Lots</i>	Engineering Start	---	Prior to 1/1/2014	Complete
	Engineering Completion	---	Prior to 1/1/2014	Complete
	Substantial Completion	3/18/2018		Projected to be Completed During Next Reporting Period
<i>Ohio Street</i>	Engineering Start	---	Prior to 1/1/2014	Complete
	Engineering Completion	---	Prior to 1/1/2014	Complete
	Substantial Completion	3/18/2018		Projected to be Completed During Next Reporting Period
<i>Kenmore Avenue</i>	Engineering Start	---	4/30/2014	Complete
	Engineering Completion	---		
	Substantial Completion	3/18/2018		

Project Name	Project Milestone	AO Project Deadline	Actual Completion Dates	Project Status
<i>Genesee Gateway Project</i>	Engineering Start	---	Prior to 1/1/2014	Complete
	Engineering Completion	---		
	Substantial Completion	3/18/2018		
<i>Allen Street</i>	Engineering Start	---	Prior to 1/1/2014	Complete
	Engineering Completion	---		
	Substantial Completion	3/18/2018		
<i>Niagara Street</i>	Engineering Start	---	Prior to 1/1/2014	Complete
	Engineering Completion	---		
	Substantial Completion	3/18/2018		
Green 2 – 410 acres of GI Control	Engineering Start:	3/18/2019		
	Engineering Completion:	3/18/2023		
	Substantial Completion:	3/18/2024		
Green 3 – 375 acres of GI Control	Engineering Start:	3/18/2023		
	Engineering Completion:	3/18/2028		
	Substantial Completion:	3/18/2029		
Green 4 – 263 acres of GI Control	Engineering Start:	3/18/2028		
	Engineering Completion:	3/18/2033		
	Substantial Completion:	3/18/2034		
<u>Gray Projects</u>				
CSOs 014/15 – Erie Basin In-line storage and optimization	Engineering Start	---	Prior to 1/1/2014	Complete
	Engineering Completion	---	Prior to 1/1/2014	Complete
	Notice to Proceed	3/18/2014	Prior to 1/1/2014	Complete
	Substantial Completion	3/18/2015	12/29/2014	Complete
<i>SPPs 206A&B</i>	Engineering Start	---	Prior to 1/1/2014	Complete
	Engineering Completion	---	Prior to 1/1/2014	Complete
	Notice to Proceed	---	5/30/2014	Complete
	Substantial Completion	3/18/2015	12/29/2014	Complete

Project Name	Project Milestone	AO Project Deadline	Actual Completion Dates	Project Status
SPP 035	Engineering Completion	---	Prior to 1/1/2014	Complete
	Notice to Proceed	---	Prior to 1/1/2014	Complete
	Substantial Completion	3/18/2015	5/31/2014	Complete
SPP 036	Engineering Start	---	Prior to 1/1/2014	Complete
	Engineering Completion	---	Prior to 1/1/2014	Complete
	Notice to Proceed	---	5/30/2014	Complete
	Substantial Completion	3/18/2015	12/5/2014	Complete
CSO 013 – Satellite storage, conveyance, FM & PS	Engineering Start	3/18/2019		
	Engineering Completion	3/18/2020		
	Notice to Proceed	3/18/2020		
	Substantial Completion	3/18/2022		
North Relief – Interceptor	Engineering Start	3/18/2019		
	Engineering Completion	3/18/2022		
	Notice to Proceed	3/18/2022		
	Substantial Completion	3/18/2026		
CSOs 010, 008/010, 061, 004 – Underflow capacity upsizing	Engineering Start	3/18/2021		
	Engineering Completion	3/18/2023		
	Notice to Proceed	3/18/2023		
	Substantial Completion	3/18/2024		
SPP 337 (CSO 053) – Satellite storage, conveyance, FM & PS	Engineering Start	3/18/2023		
	Engineering Completion	3/18/2025		
	Notice to Proceed	3/18/2025		
	Substantial Completion	3/18/2027		
SPP 336A&B (CSO 053) – Satellite storage, conveyance, FM & PS	Engineering Start	3/18/2024		
	Engineering Completion	3/18/2026		
	Notice to Proceed	3/18/2026		
	Substantial Completion	3/18/2029		

Project Name	Project Milestone	AO Project Deadline	Actual Completion Dates	Project Status
Jefferson Avenue & Florida Street (CSO 053) – Satellite storage, conveyance and FM	Engineering Start	3/18/2025		
	Engineering Completion	3/18/2027		
	Notice to Proceed	3/18/2027		
	Substantial Completion	3/18/2030		
CSO 055 – Satellite storage, conveyance, FM & PS	Engineering Start:	3/18/2027		
	Engineering Completion:	3/18/2030		
	Notice to Proceed:	3/18/2030		
	Substantial Completion:	3/18/2034		
CSOs 028/044/047 – Satellite storage, conveyance, FM & PS	Engineering Start:	3/18/2028		
	Engineering Completion:	3/18/2031		
	Notice to Proceed:	3/18/2031		
	Substantial Completion:	3/18/2034		
CSO 052 – Satellite storage, conveyance, FM & PS	Engineering Start:	3/18/2030		
	Engineering Completion:	3/18/2032		
	Notice to Proceed:	3/18/2032		
	Substantial Completion:	3/18/2034		
CSO 064 – Satellite storage, conveyance, FM & PS	Engineering Start:	3/18/2030		
	Engineering Completion:	3/18/2032		
	Notice to Proceed:	3/18/2032		
	Substantial Completion:	3/18/2034		

Attachment B to the Semi-Annual Status Report: March 2015

Detailed Project Descriptions

Project Name	Project Description	Project Purpose*
<u>Phase I Projects</u>		
Bird/Lang RTC Projects	These RTC projects utilize available capacity of large sewers to provide flow control measures during wet weather events through the use of gates which allow continuous dry weather underflow. The Bird RTC Project is located on Bird Avenue between Parkdale Avenue and Hoyt Street. The Lang RTC Project is located on Lang Avenue between Courtland Avenue and Hagen Street.	The Lang RTC project is designed to have a storage volume of 0.84 MG, thereby reducing discharges through SPP 340 to CSO 053. Together with other LTCP projects, this project is projected to reduce CSO 053 discharges to Scajaquada Creek based on the 1993 Modified Typical Year (TY) to 4 activations. The Bird RTC project is designed to provide 1.01 MG of storage volume, thereby reducing discharges through SPP 013 to CSO 004. Together with other LTCP projects, this project is projected reduce CSO 004 discharges to the Black Rock Canal based on the TY to 3 activations.
<u>Foundation Projects</u>		
Foundation 1 - Smith Street Storage	Engineering for this project have progressed to the 90% stage. At this time this project has been separated into two contracts, one will consist of installation of collection sewers for street receiver flows on Leddy Street, South Park Avenue, Owahn Place, Prenatt Street, Bolton Place, St. Stephen's Place, and Buffalo River Place in order to discharge these storm flows downstream of regulators combined the Optimization projects for SPP 217 and SPP 318. The second contract consists of an in-line storage project which is designed to detain wet weather flows along the western side of Smith Street between the I-190 and the I-190 off ramp within the Smith Street Drain for discharge to the South Interceptor thereby diverting combined sewer flows from CSO 026.	The Smith Street in-line storage and partial sewer separation projects are designed to divert and detain the equivalent of a storage volume of 0.5 MG, thereby reducing CSO 026 discharges. Together with other LTCP projects, this project is projected to reduce CSO 026 discharges to the Buffalo River based on the TY to 3 activations.
Foundation 2 - SPP Optimization (20 projects)	Project consists of multiple smaller projects that will overlap in engineering and construction. SEE DETAILS FOLLOWING FOR SPECIFIC PROJECTS	In general, these projects will reduce discharges to the CSOs by detaining flows within the BSA's system through the modification of existing control structures.

Project Name	Project Description	Project Purpose*
<i>SPP 180 Optimization</i>	This project consisted of raising of the weir associated with SPP 180 by 2.0' along its entire length. SPP 180 is located on Delaware Avenue at the intersection with West Delavan.	The SPP 180 Optimization project was designed to increase the capacity of the CSS at SPP 180 thereby decreasing CSO 006 discharges. Together with other LTCP projects, this project is projected to reduce CSO 006 discharges to the Black Rock Canal based on the TY to 4 activations.
<i>SPP 331 Optimization</i>	SPP331 is located at the intersection of Elmwood Avenue and West Delavan Avenue. Preliminary plans were for the diversion of flows from this point through a new sewer to Bird Avenue along the centerline of Elmwood Avenue. This would have required major disruption of a very high traffic commercial area and was deemed impractical. Plans have currently been developed to instead divert flows through a predominantly residential area, however further analysis has revealed an opportunity to divert the same flow that was to have been diverted through this project through a system of localized weir modifications rather than extensive pipe installation.	The SPP 331 Optimization project is designed to increase the underflow capacity at SPP 331 thereby decreasing CSO 006 discharges. Together with other LTCP projects, this project is projected to reduce CSO 006 discharges to the Black Rock Canal based on the TY to 4 activations.
<i>SPP 036 Optimization</i>	This project consisted of the reconstruction of 35' of 30" sewer associated with SPP 036 to reverse the slope. It was located on Church Street between the off and on ramps of the Skyway (State Route 5).	The SPP 036 Optimization project was designed to increase the underflow capacity at SPP 036 thereby decreasing CSO 015 discharges. Together with other LTCP projects, this project is projected based on the TY to reduce discharges to the Erie Basin through CSO 015 to 0 activations.
<i>SPP 217 Optimization</i>	In association with the Smith Street partial sewer separation project, this project will consist of the removal of two bottom orifice plates totaling 1.42' in height, increasing the orifice size and conveyance capacity of the Emslie Street Sewer. SPP 217 is located on Emslie Street at its intersection with Eagle Street.	The SPP 217 Optimization project is designed to increase the underflow capacity at SPP 217 thereby decreasing CSO 026 discharges. Together with other LTCP projects, this project is projected to reduce CSO 026 discharges to the Buffalo River based on the TY to 3 activations.

Project Name	Project Description	Project Purpose*
<i>SPP 318 Optimization</i>	In association with the Smith Street partial sewer separation project, this project will consist of the removal of an orifice plate, increasing the orifice size and conveyance capacity of the Clinton Avenue Sewer. SPP 318 is located east of the intersection of Fillmore Avenue and Clinton Street.	The SPP 318 Optimization project is designed to increase the underflow capacity at SPP 318 thereby decreasing CSO 026 discharges. Together with other LTCP projects, this project is projected to reduce CSO 026 discharges to the Buffalo River based on the TY to 3 activations.
<i>SPP 097A Optimization</i>	This project consists of abandoning an inactive combined sewer, converting another to a storm sewer and abandoning the underflow connection. SPP 097A is located at the intersection of the extension of Prenatt and Orlando Streets.	The SPP 097A Optimization project is designed to eliminate SPP 097A thereby decreasing CSO 026 discharges. Together with other LTCP projects, this project is projected to reduce CSO 026 discharges to the Buffalo River based on the TY to 3 activations.
<i>SPP 122 Optimization</i>	This project consisted of raising of the weir associated with SPP 122 by 0.5' along its entire length. SPP 122 is located on South Legion Drive just north of the intersection with Meriden Street.	The SPP 122 Optimization project was designed to increase the flow volume conveyed by the CSS at SPP 122 thereby decreasing CSO 037 discharges. Together with other LTCP projects, this project is projected to reduce CSO 037 discharges to the Buffalo River based on the TY to 3 activations.
<i>SPP 163 Optimization</i>	The SPP 163 Weir Optimization project consists of replacing the existing weir with a new weir 0.75' higher. It is located to the East of the intersection of Fillmore Avenue and Northland on Northland Avenue.	The SPP 163 Optimization project is designed to increase the flow volume conveyed by the CSS at SPP 163 thereby decreasing CSO 053 discharges. Together with other LTCP projects, this project is projected to reduce CSO 053 discharges to Scajaquada Creek based on the TY to 4 activations.
<i>SPP 165 Optimization</i>	This project consisted of raising of the weir associated with SPP 165 by 0.5' along its entire length. SPP 165 is located on Fillmore Avenue just north of the intersection with East Delavan Street.	The SPP 165 Optimization project was designed to increase the capacity of the CSS at SPP 165 thereby decreasing CSO 053 discharges. Together with other LTCP projects, this project is projected to reduce CSO 053 discharges to Scajaquada Creek based on the TY to 4 activations.
<i>SPP 165A Optimization</i>	The weir associated with SPP 165A located at the intersections of Fillmore and Kensington Avenues.	The SPP 165A Optimization project was designed to increase the capacity of the CSS at SPP 165A by raising the weir by 0.75' and upsizing 675' of 15" pipe to 18" pipe to reduce CSOs in association with CSO 053. Together with other LTCP projects, this project is projected to reduce CSO 053 discharges to Scajaquada Creek based on the TY to 4 activations.

Project Name	Project Description	Project Purpose*
<i>SPP 178 Optimization</i>	This project consisted of raising of the weir associated with SPP 178 by 0.5' along its entire length. SPP 178 is located on Masten Avenue just north of the intersection with Northland Avenue.	The SPP 178 Optimization project was designed to increase the flow volume conveyed by the CSS at SPP 178 thereby decreasing CSO 053 discharges. Together with other LTCP projects, this project is projected to reduce CSO 053 discharges to Scajaquada Creek based on the TY to 4 activations.
<i>SPP 335B Optimization</i>	This project consisted of raising of the weir associated with SPP 335B by 1.0' along its entire length. SPP 335B is located on Hager Street just south of the intersection with Florida Street.	The SPP 335B Optimization project was designed to increase the flow volume conveyed by CSS at SPP 335B thereby decreasing CSO 053 discharges. Together with other LTCP projects, this project is projected to reduce CSO 053 discharges to Scajaquada Creek based on the TY to 4 activations.
<i>SPP 336A Optimization</i>	This project will be constructed in association with the SPP 331 optimization. The project will consist of removing a sluice gate and orifice plate and modifying the existing structure. SPP 336A is located on Humboldt Parkway North of the Scajaquada Drain.	The SPP 336A Optimization project is designed to increase the underflow capacity of the CSS at SPP 336A thereby decreasing CSO 053 discharges. Together with other LTCP projects, this project is projected to reduce CSO 053 discharges to Scajaquada Creek based on the TY to 4 activations.
<i>SPP 341A Optimization</i>	SPP 341A is located on Genesee Street east of Kerns Avenue.	The SPP 341A Optimization project would increase the flow volume conveyed by the CSS at SPP 341A thereby decreasing CSO 053 discharges. Together with other LTCP projects, this project is projected to reduce CSO 053 discharges to Scajaquada Creek based on the TY to 4 activations. Field conditions may require modification to this planned optimization.
<i>SPP 342B Optimization</i>	This project consisted of raising of the weir associated with SPP 342B by 1.0' along its entire length. SPP 342B is located on Sprenger Avenue adjacent to Schiller Park.	The SPP 342B Optimization project was designed to increase the flow volume conveyed by the CSS at SPP 342B thereby decreasing CSO 053 discharges. Together with other LTCP projects, this project is projected to reduce CSO 053 discharges to Scajaquada Creek based on the TY to 4 activations.
<i>SPP 001 Optimization</i>	The weir associated with SPP 001 located at the discharge of Cornelius Creek into the Niagara River and tributary to CSO 055 has been raised 1.0' to reduce CSOs.	The SPP 001 Optimization project was designed to increase the flow volume conveyed by the CSS at SPP 001 thereby decreasing CSO 055 discharges. Together with other LTCP projects, this project is projected to reduce CSO 055 discharges to the Niagara River based on the TY to 9 activations.

Project Name	Project Description	Project Purpose*
<i>SPP 183 Optimization</i>	This project consisted of raising of the weir associated with SPP 183 by 2.0' along its entire length. SPP 183 is located at the intersection of Bradley Avenue and Dewitt Street.	The SPP 183 Optimization project was designed to increase the flow volume conveyed by the CSS at SPP 183 thereby decreasing CSO 059 discharges. Together with other LTCP projects, this project is projected to reduce CSO 059 discharges to Scajaquada Creek based on the TY to 0 activations.
<i>SPP 283 Optimization</i>	SPP 283 is located in the median between the I-190 South ramp to Porter Avenue and a service road near the West Side Rowing Club. This project consisted of removing an orifice plate which restricted flows from entering the Swan Trunk and the installation of a new 1.0' tall weir to restrict flows from discharging through CSO 063.	The SPP 283 Optimization project was designed to increase the underflow capacity of the CSS at SPP 283 thereby decreasing CSO 063 discharges. Together with other LTCP projects, this project is projected to reduce CSO 063 discharges to the Niagara River based on the TY to 4 activations.
<i>SPP 211 Optimization</i>	This project consisted of constructing a weir to an elevation above the overflow raised pipe invert at SPP 211. SPP 211 is located at the South East corner of the intersection of Clinton and South Ogden Streets.	The SPP 211 Optimization project was designed to increase the flow volume conveyed by the CSS at SPP 211 thereby decreasing CSO 066 discharges. Together with other LTCP projects, this project is projected to reduce CSO 066 discharges to the Buffalo River based on the TY to 4 activations.
Foundation 3 - Remaining RTC (14 sites)	These RTC projects propose to utilize available capacity in the CSS to provide flow control measures during wet weather events through the use of active controls.	In general, these projects are designed to reduce discharges to the CSOs through the detention of flows within the BSA's CSS system.
<i>Hertel Northwest In-Line Storage</i>	This RTC project is proposed to utilize available capacity of a large sewer to provide flow control measures during wet weather events while allowing continuous dry weather underflow. The proposed project location is within the northern of the two large combined sewers which are located under Hertel Avenue.	This RTC project is proposed to utilize available capacity within the collection system to detain flows until downstream capacity becomes available. Together with other LTCP projects, this project is projected to reduce CSO 055 discharges to the Niagara River based on the TY to 9 activations.
<i>Hertel South In-Line Storage</i>	This RTC project is proposed to utilize available capacity in the CSS capacity of a large sewer to provide flow control measures during wet weather events while allowing continuous dry weather underflow. The proposed project location is within the southern of the two large combined sewers which are located under Hertel Avenue.	This RTC project is proposed to utilize available capacity within the collection system to detain flows until downstream capacity becomes available. Together with other LTCP projects, this project is projected to reduce CSO 055 discharges to the Niagara River based on the TY to 9 activations.

Project Name	Project Description	Project Purpose*
<i>Hertel Northeast In-Line Storage</i>	This RTC project is proposed to utilize available capacity in the CSS capacity of a large sewer to provide flow control measures during wet weather events while allowing continuous dry weather underflow. This project will be located within the northern of the two large combined sewers which are located under Hertel Avenue.	This RTC project is proposed to utilize available capacity within the collection system to detain flows until downstream capacity becomes available. Together with other LTCP projects, this project is projected to reduce CSO 055 discharges to the Niagara River based on the TY to 9 activations.
<i>Bird East In-Line Storage</i>	This RTC project is proposed to utilize available capacity in the CSS capacity of a large sewer to provide flow control measures during wet weather events while allowing continuous dry weather underflow. This project will be located to the east of the above mentioned Bird RTC project along the same Bird Avenue sewer.	This RTC project is proposed to utilize available capacity within the collection system to detain flows until downstream capacity becomes available. Together with other LTCP projects, this project is projected to reduce CSO 004 discharges to the Black Rock Canal based on the TY to 3 activations.
<i>East Ferry In-Line Storage</i>	This RTC project is proposed to utilize available capacity in the CSS capacity of a large sewer to provide flow control measures during wet weather events while allowing continuous dry weather underflow. The proposed project location is along the Ferry Street sewer upstream of its leaping weir overflow to the Scajaquada Drain north of Florida Street.	This RTC project is proposed to utilize available capacity within the collection system to detain flows until downstream capacity becomes available. Together with other LTCP projects, this project is projected to reduce CSO 053 discharges to Scajaquada Creek based on the TY to 4 activations.
<i>Colorado In-Line Storage</i>	This RTC project is proposed to utilize available capacity in the CSS capacity of a large sewer to provide flow control measures during wet weather events while allowing continuous dry weather underflow. The proposed project location is along the Colorado Avenue sewer which runs underneath the manufacturing facility located at 333 Ganson Street.	This RTC project is proposed to utilize available capacity within the collection system to detain flows until downstream capacity becomes available. Together with other LTCP projects, this project is projected to reduce CSO 053 discharges to Scajaquada Creek based on the TY to 4 activations.
<i>North Bailey In-Line Storage</i>	This RTC project is proposed to utilize available capacity in the CSS capacity of a large sewer to provide flow control measures during wet weather events while allowing continuous dry weather underflow. The proposed project location is along Bailey Avenue north of Scajaquada Street.	This RTC project is proposed to utilize available capacity within the collection system to detain flows until downstream capacity becomes available. Together with other LTCP projects, this project is projected to reduce CSO 053 discharges to Scajaquada Creek based on the TY to 4 activations.

Project Name	Project Description	Project Purpose*
<i>South Bailey In-Line Storage</i>	This RTC project is proposed to utilize available capacity in the CSS capacity of a large sewer to provide flow control measures during wet weather events while allowing continuous dry weather underflow. The proposed project location is along Bailey Avenue north of Scajaquada Street and south of the afore mentioned North Bailey In-Line Storage project.	This RTC project is proposed to utilize available capacity within the collection system to detain flows until downstream capacity becomes available. Together with other LTCP projects, this project is projected to reduce CSO 053 discharges to Scajaquada Creek based on the TY to 4 activations.
<i>Roslyn In-Line Storage</i>	This RTC project is proposed to utilize available capacity in the CSS capacity of a large sewer to provide flow control measures during wet weather events while allowing continuous dry weather underflow. The proposed project location is near Roslyn Street on Lang Avenue.	This RTC project is proposed to utilize available capacity within the collection system to detain flows until downstream capacity becomes available. Together with other LTCP projects, this project is projected to reduce CSO 053 discharges to Scajaquada Creek based on the TY to 4 activations.
<i>Kay In-Line Storage</i>	This RTC project is proposed to utilize available capacity in the CSS capacity of a large sewer to provide flow control measures during wet weather events while allowing continuous dry weather underflow. The proposed project location is Kay Street north of the Kensington Expressway.	This RTC project is proposed to utilize available capacity within the collection system to detain flows until downstream capacity becomes available. Together with other LTCP projects, this project is projected to reduce CSO 053 discharges to Scajaquada Creek based on the TY to 4 activations.
<i>Amherst Quarry Off-Line Storage</i>	This RTC project proposes to utilize available capacity in the CSS capacity within the inactive Amherst Quarry to provide flow control measures during wet weather events, once downstream capacity is available, flows will then be pumped back into the system. The Amherst Quarry is located in an area bounded by Parkridge Avenue, East Amherst Street, and Hewitt Avenue.	This RTC project is proposed to utilize available capacity of the quarry to detain flows until downstream capacity becomes available. Together with other LTCP projects, this project is projected to reduce CSO 053 discharges to Scajaquada Creek based on the TY to 4 activations.
<i>Fillmore North In-Line Storage</i>	This RTC project is proposed to utilize available capacity in the CSS capacity of a large sewer to provide flow control measures during wet weather events while allowing continuous dry weather underflow. This project will be located on Fillmore Avenue.	This RTC project is proposed to utilize available capacity within the collection system to detain flows until downstream capacity becomes available. Together with other LTCP projects, this project is projected to reduce CSO 026 discharges to the Buffalo River based on the TY to 3 activations.

Project Name	Project Description	Project Purpose*
<i>Gibson CSO Line Storage</i>	This project is proposed to utilize the available capacity of the CSO pipe downstream of the SPP, but before the discharge point or outfall. It would be designed to convey water to prevent surface flooding and overflows through upstream SPPs. Once the storm event has subsided, it would be designed to dewater back into the combined system. The dewatering rate would be controlled so that it would not cause overflows downstream from the control structure. The proposed project location is on Gibson Street.	This RTC project is proposed to utilize available capacity within the collection system to detain flows until downstream capacity becomes available. Together with other LTCP projects, this project is projected to reduce CSO 026 discharges to the Buffalo River based on the TY to 3 activations.
<i>Montgomery CSO Line Storage</i>	This project is proposed to utilize the available capacity of the CSO pipe downstream of the SPP, but before the discharge point or outfall. It would be designed to convey water to prevent surface flooding and overflows through upstream SPPs. Once the storm event has subsided, it would be designed to dewater back into the combined system. The dewatering rate would be controlled so that it would not cause overflows downstream from the control structure. The proposed project location is along the railroad right-of-way near Montgomery Street.	This RTC project is proposed to utilize available capacity within the collection system to detain flows until downstream capacity becomes available. Together with other LTCP projects, this project is projected to reduce CSO 026 discharges to the Buffalo River based on the TY to 3 activations.
Foundation 4 - Hamburg Drain Optimizations	This project will entail several in-system optimizations, e.g. raising of weirs, lengthening of weirs, rerouting of flows, etc. to reduce the overflow events at a number of upstream SPPs in order to control flows through CSOs 017, 022, and 064. These optimizations would be located within the Hamburg Basin.	These optimization projects are proposed to increase the flow volume conveyed by the CSS upstream of the SPPs thereby decreasing CSO 017, 022, and 064 discharges. Together with other LTCP projects, this project is projected based on the TY to reduce discharges to the Buffalo River through CSO 017 to 4 activations, CSO 022 to 5 activations, and CSO 064 to 3 activations.
Foundation 4 - Hamburg Drain Storage	Together with the Hamburg Drain Optimizations, this project would be designed to provide the equivalent of 5 MG of offline storage. This facility would be located within the Hamburg Basin.	This storage project is proposed to provide off-line storage thereby decreasing CSO 017, 022, and 064 discharges. Together with other LTCP projects, this project is projected based on the TY to reduce discharges to the Buffalo River through CSO 017 to 4 activations, CSO 022 to 5 activations, and CSO 064 to 3 activations.

Project Name	Project Description	Project Purpose*
<u>Green Infrastructure Projects</u>		
Green 1 - Pilot Projects – 267-acres of GI control SEE DETAILS FOLLOWING FOR SPECIFIC PROJECTS	Projects consist of multiple green infrastructure projects that will overlap in engineering and construction.	In general, this phase is designed to control stormwater flow from 267 acres of impervious area in the various sewer sheds within the targeted areas.
<i>2001-2013 Demolitions</i>	This project consists of the demolition of vacant houses thereby replacing impervious with pervious surface.	This project is designed to control stormwater flow from 354 total acres of impervious area.
<i>2014-2018 Demolitions</i>	This project consists of the demolition of vacant houses thereby replacing impervious with pervious surface. In addition, the BSA is piloting alterations to the City of Buffalo's demolition specifications to allow for the use of modified rain gardens to increase onsite infiltration.	This project is designed to control stormwater flow from 50 total acres of impervious area.
<i>PUSH Blue Projects</i>	PUSH-Buffalo will install rain gardens, porous pavement and a green roof and distribute rain barrels within the CSO 012 sewer shed.	This project is designed to control stormwater flow from 1 acre of impervious area.
<i>Carlton Street Porous Asphalt</i>	This project consists of the installation of pervious pavement to retain stormwater from the area tributary to the Right-of-Way on Carlton Street between Michigan and Jefferson Avenues in the City of Buffalo as part of the City's streetscape project.	This project is designed to control stormwater flow from 1 acre of impervious area.
<i>Fillmore Avenue Porous Parking Lots and Green Lots</i>	This project consists of the installation of porous pavement parking lots and modified rain gardens to retain stormwater from the area tributary to the Right-of-Way of Fillmore Avenue in the City of Buffalo as part of the City's streetscape project.	This project is designed to control stormwater flow from 0.4 total acres of impervious area.

Project Name	Project Description	Project Purpose*
<i>Ohio Street</i>	This project consists of the installation of green infrastructure to retain stormwater from the area tributary to the Right-of-Way on Ohio Street in the City of Buffalo as part of the City's streetscape project.	This project is designed to control stormwater flow from 6.1 total acres of impervious area.
<i>Kenmore Avenue</i>	This project consists of the installation of green infrastructure to retain stormwater from the area tributary to the Right-of-Way on Kenmore Avenue in the City of Buffalo as part of the City's streetscape project.	This project is designed to control stormwater flow from 5.17 total acres of impervious area.
<i>Genesee Gateway Project</i>	This project consists of the installation of green infrastructure to retain stormwater from the area tributary to the Right-of-Way on Genesee Street in the City of Buffalo as part of the City's streetscape project.	This project is designed to control stormwater flow from 2.8 total acres of impervious area.
<i>Allen Street</i>	This project will consist of the installation of green infrastructure to retain stormwater from the area tributary to the Right-of-Way for the portion of Allen Street between Main Street and Elmwood Avenue in the City of Buffalo as part of the City's streetscape project.	This project is designed to control stormwater flow from 2.5 total acres of impervious area.
<i>Niagara Street</i>	This project consists of the installation of green infrastructure to retain stormwater from the area tributary to the Right-of-Way for the length of Niagara Street in the City of Buffalo as part of the City's streetscape project.	This project is designed to control stormwater flow from 50 total acres of impervious area.
Green 2 – 410 acres of GI Control	These projects will consist of multiple green infrastructure projects that will overlap in engineering and construction. Details will be provided in the Phase 2 Green Infrastructure Master Plan.	In general, these projects would be designed to retain stormwater flow from 410 acres of impervious area in the various sewer sheds in the targeted areas.
Green 3 – 375 acres of GI Control	These projects will consist of multiple green infrastructure projects that will overlap in engineering and construction. Details will be provided in the Phase 2 Green Infrastructure Master Plan.	In general, these projects would be designed to retain stormwater flow from 375 acres of impervious area in the various sewer sheds in the targeted areas.

Project Name	Project Description	Project Purpose*
Green 4 – 263 acres of GI Control	These projects will consist of multiple green infrastructure projects that will overlap in engineering and construction. Details will be provided in the Phase 2 Green Infrastructure Master Plan.	In general, these projects would be designed to retain stormwater flow from 263 acres of impervious area in the various sewer sheds in the targeted areas.
<u>WWTP</u>		
WWTP Improvement Project Alternative C2	The proposed project is expected to rehabilitate the existing primary clarifiers by adding high rate disinfection and additional secondary clarifiers at the Bird Island WWTP.	This project would be designed to provide treatment of wet weather flows and increased secondary treatment capacity.
<u>Gray Projects</u>		
CSOs 014/15 – Erie Basin In-line storage and optimization		
<i>SPPs 206A&B</i>	A new 113,000 gallon in-line storage facility was constructed in association with SPPs 206A&B to reduce CSOs at CSO 014. This site is located at Trenton Road/ Village Court north east of Fourth Street.	This project was designed to provide in-line storage thereby decreasing CSO 014 discharges through SPPs 206A&B. Together with other LTCP projects, this project is projected based on the TY to reduce discharges to the Erie Basin through CSO 014 to 2 activations.
<i>SPP 035</i>	A new 50,000 gallon in-line storage facility was constructed between the Genesee Trunk and Swan Trunk sewers to create additional storage capacity in association with SPP 035 (CSO 015). This project is located to the north west of the intersection of South Elmwood Avenue and West Genesee Street.	This project was designed to provide in-line storage thereby decreasing CSO 015 discharges through SPP 35. Together with other LTCP projects, this project is projected based on the TY to reduce discharges to the Erie Basin through CSO 015 to 0 activations.
<i>SPP 036</i>	This project consisted of the reconstruction of 35' of 30" sewer associated with SPP 036 to reverse the slope. This site is located on Church Street between the off and on ramps of the Skyway bridge (State Route 5).	This sewer reconstruction project was designed to increase the underflow capacity of the CSS thereby decreasing CSO 015 discharges. Together with other LTCP projects, this project is projected based on the TY to reduce discharges to the Erie Basin through CSO 015 to 0 activations.

Project Name	Project Description	Project Purpose*
CSO 013 – Satellite storage, conveyance, FM & PS	CSO 013 is located at the extension of Virginia Street into the Black Rock Canal, the structure is tentatively planned to be built between the last SPP structure and the Canal. The proposed satellite storage facility would consist of a covered, concrete, underground tank.	This storage project would provide off-line storage thereby decreasing CSO 013 discharges. Preliminary design is for a 0.3 MG offline storage facility. Together with other LTCP projects, this project is projected based on the TY to reduce discharges to the Black Rock Canal through CSO 013 to 4 activations.
North Relief – Interceptor	This project will consist of a deep tunnel relief sewer to run in the vicinity of Niagara Street between Bird Avenue and Albany Street with an additional line connecting the tunnel to the WWTP influent siphon. Preliminary design is for 5,310' of 96" pipe and 571' of 120" pipe.	The purpose of this project is to reduce discharges through CSOs 004, 011, and 012, by creating a new relief sewer thereby creating offline storage capacity capacity in the CSS. Together with other LTCP projects, this project is projected based on the TY to reduce discharges to the Black Rock Canal through CSO 004 to 3 activations, CSO 011 to 4 activation, and CSO 012 to 2 activations.
CSOs 010, 008/010, 061, 004 – Underflow capacity upsizing	This project will consist of upsizing of underflow piping to maximize flow to the interceptors. This project is tentatively proposed for between Breckenridge Street and Brace Street along the I-190 with an extension along Brace Street across Niagara Street.	This underflow capacity upsizing project would increase the capacity of the CSS thereby decreasing CSO 010, 008, 061 and 004 discharges. Together with other LTCP projects, this project is projected based on the 1993 Modified Typical Year to reduce discharges to the Black Rock Canal through CSO 004 to 3 activations, CSO 010 to 1 activations, CSO 008 to 0 activations, and CSO 061 to 4 activations.
SPP 337 (CSO 053) – Satellite storage, conveyance, FM & PS	SPP 337 is located at Colorado Street North of Scajaquada Street. The proposed satellite storage facility would consist of a covered, concrete, underground tank.	The purpose of this project is to reduce discharges through CSO 53 to the Scajaquada Creek. Preliminary design is for a 0.7 MG off-line storage facility. Together with other LTCP projects, this project is projected reduce CSO discharges to Scajaquada Creek based on the TY to 4 activations.
SPP 336A&B (CSO 053) – Satellite storage, conveyance, FM & PS	SPP 336A&B are located on Humboldt Parkway on each side of the Scajaquada Drain. The proposed satellite storage facility would consist of a covered, concrete, underground tank.	The purpose of this project is to reduce discharges through CSO 53 to the Scajaquada Creek. Preliminary design is for a 4.2 MG off-line storage facility. Together with other LTCP projects, this project is projected reduce CSO discharges to Scajaquada Creek based on the TY to 4 activations.

Project Name	Project Description	Project Purpose*
Jefferson Avenue & Florida Street (CSO 053) – Satellite storage, conveyance and FM	The proposed location for this facility is in the vicinity of the intersection of Jefferson Avenue and Florida Street. The proposed satellite storage facility would consist of a covered, concrete, underground tank.	The purpose of this project is to reduce discharges through CSO 53 to the Scajaquada Creek. Preliminary design is for a 2.6 MG off-line storage facility. Together with other LTCP projects, this project is projected reduce CSO discharges to Scajaquada Creek based on the TY to 4 activations.
CSO 055 – Satellite storage, conveyance, FM & PS	For CSO 055, the proposed storage facility would be located upstream of the regulator, near Military Road. At this location, an offline facility would be constructed and flows above 26 MGD (instantaneous peak) would be diverted from the South Hertel Trunk sewer into the storage facility. The proposed satellite storage facility would consist of a covered, concrete, underground tank.	The purpose of this project is to reduce discharges through CSO 55 to the Niagara River. Preliminary design is for a 7.5 MG off-line storage facility. Together with other LTCP projects, this project is projected reduce CSO discharges to the Niagara River through CSO 55 based on the TY to 9 activations.
CSOs 028/044/047 – Satellite storage, conveyance, FM & PS	The proposed location for this facility is underneath the Tops parking lot between South Park Avenue and the Buffalo River. The proposed satellite storage facility would consist of a covered, concrete, underground tank.	The purpose of this project is to reduce discharges through CSO 28 to the Buffalo River and through CSOs 047 and 044 to Cazenovia Creek. Preliminary design is for a 2.3 MG off-line storage facility. Together with other LTCP projects, this project is projected reduce CSO discharges based on the TY to 6 activations through CSO 028, 2 activations through CSO 044 and 3 activations through CSO 047.
CSO 052 – Satellite storage, conveyance, FM & PS	The proposed location for this facility is in the vicinity of South Ogden Street between Mineral Springs Road and Cazenovia Creek. The proposed satellite storage facility would consist of a covered, concrete, underground tank.	The purpose of this project is to reduce discharges through CSO 52 to the Buffalo River. Preliminary design is for a 0.6 MG offline storage facility. Together with other LTCP projects, this project is projected reduce CSO discharges to the Buffalo River through CSO 052 based on the TY to 3 activations.

Project Name	Project Description	Project Purpose*
CSO 064 – Satellite storage, conveyance, FM & PS	The proposed location for this facility is in the vicinity of the confluence of Ohio, Louisiana and Saint Claire Streets. The proposed satellite storage facility would consist of a covered, concrete, underground tank.	The purpose of this project is to reduce discharges through CSO 064 to the Buffalo River. Preliminary design is for a 0.1 MG off-line storage facility. Together with other LTCP projects, this project is projected reduce CSO discharges to the Buffalo River through CSO 064 based on the TY to 3 activations.

***Note:** Black Rock Canal Performance Criterion is 4 Activations in the Typical Year
Buffalo River Performance Criterion is 6 Activations in the Typical Year
Cazenovia Creek - B Performance Criterion is 4 Activations in the Typical Year
Cazenovia Creek - C Performance Criterion is 6 Activations in the Typical Year
Erie Basin Performance Criterion is 2 Activations in the Typical Year
Niagara River Performance Criterion is 9 Activations in the Typical Year
Scajaquada Creek - Performance Criterion is 4 Activations in the Typical Year

Attachment C to the Semi-Annual Status Report: March 2015

Materials from Public Meetings

[illegible]



ADMINISTRATIVE OFFICES

1038 CITY HALL
65 NIAGARA SQUARE
BUFFALO, NY 14202-3378
PHONE: (716) 851-4664
FAX: (716) 856-5810

WASTEWATER TREATMENT PLANT

FOOT OF WEST FERRY
90 WEST FERRY STREET
BUFFALO, NY 14213-1799
PHONE: (716) 851-4664
FAX: (716) 883-3789

July 24, 2014

BSA LTCP Stakeholder Panel



Re: Buffalo Sewer Authority
Combined Sewer Overflow Long Term Control Plan
Stakeholder Panel Update

Dear Participant:

As you recall through your involvement on our Stakeholder Panel, the Buffalo Sewer Authority (BSA) has been in the process of developing a Long Term Control Plan (LTCP) for the abatement of combined sewer overflows. Much has transpired since our last Stakeholder Panel meeting on April 25, 2012. Since that meeting, the BSA team continued to develop their LTCP program in the spirit of improving water quality in the individual receiving streams, while remaining conscious of the economic impacts. During this time period, the BSA has also improved their relationship with both the Regulatory Agencies (USEPA and NYSDEC) and environmental groups alike to the point that the Regulatory Agencies have issued approval of the entire LTCP program and extended the original implementation schedule from the proposed fifteen years to twenty. More importantly, the projected cost of the approved LTCP program, \$380 million is significantly lower than the \$600 million program proposed in 2004. Between the significant cost reduction and the schedule extension, the BSA believes that the anticipated economic impact on the ratepayers will be a burden that can and will be managed. I personally believe that the LTCP framework and subsequent approval are in no small measure due to the efforts and input from yourself and the other members of the Stakeholder Panel and I would like to personally thank you for your participation.

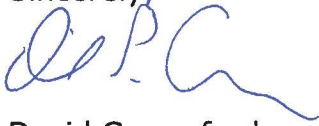
As a continuation of our public participation efforts, we would like to resume the Stakeholder Panel involvement and have scheduled an update meeting for August 7, 2014 at 2:00pm. This meeting will serve to update the panel on the status of the program including the timeline of events since our last meeting, the final recommended LTCP, ongoing projects, and next steps, as well as help determine a vision for the Stakeholder Panel and public participation program moving forward. The meeting will be held at the BSA's Bird Island Wastewater Treatment Plant (WWTP). The WWTP was the location of our last meeting and it is located at the foot of West Ferry Street.

We ask that you please RSVP to Lisa Derrigan, a representative from our engineering consultant, ARCADIS, at Lisa.Derrigan@arcadis-us.com or 716.667.6644 as to whether or not you will be attending the meeting.

If you have any questions though, please do not hesitate to contact me directly at 851-4664 ext 4201.

On behalf of the Buffalo Sewer Authority, and our residential and industrial customers throughout the City of Buffalo, thank you very much for your participation on this important panel.

Sincerely,



David Comerford
General Manager
Buffalo Sewer Authority

cc: Michael Quinn, ARCADIS

BSA's CSO LTCP

Stakeholder Panel Meeting

August 7, 2014



Imagine the result

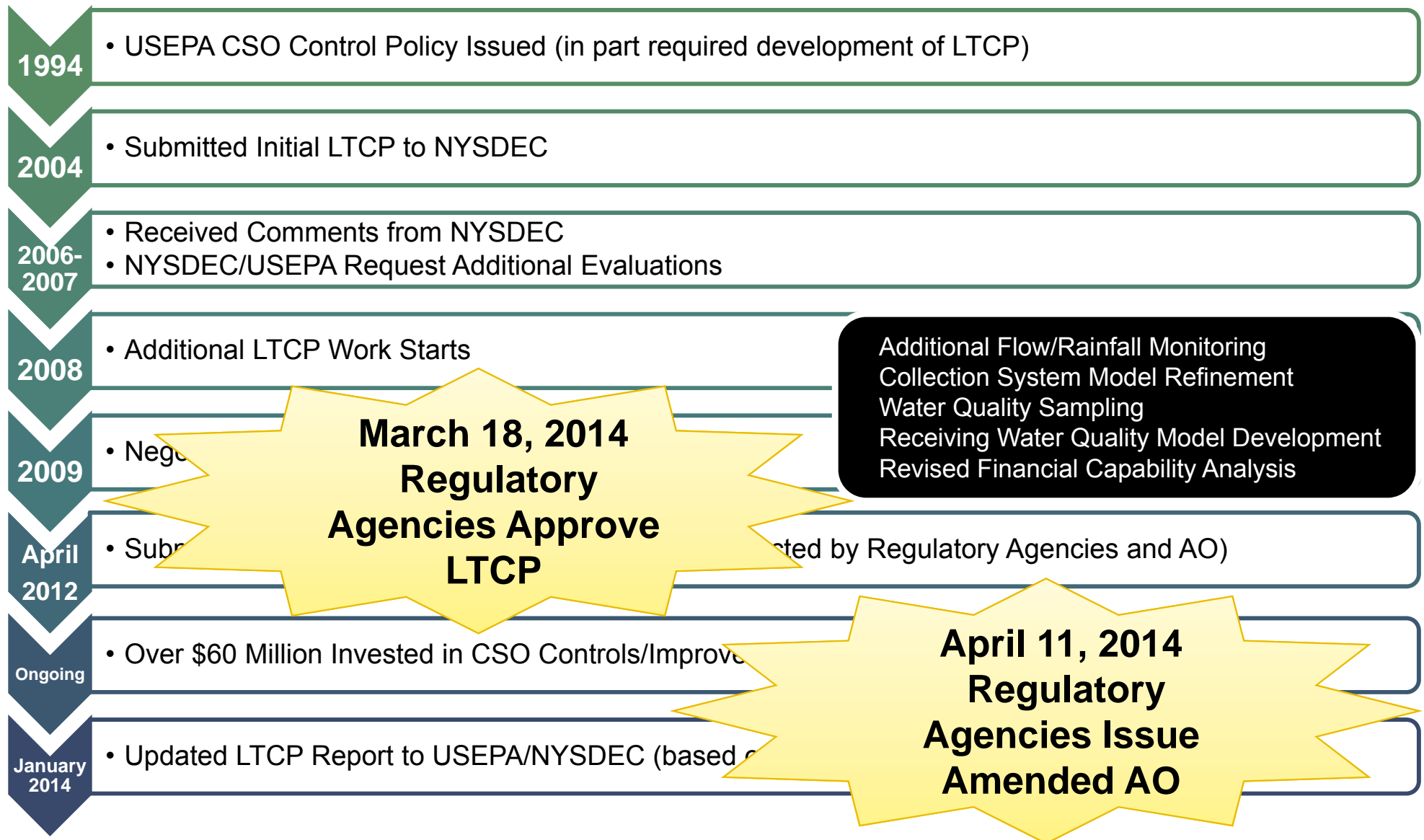


Agenda

- Project History
- Recap from Last Meeting
- Timeline Since Last Meeting
- Final Recommended Plan
- Ongoing Projects
- Next Steps
- Public Participation Moving Forward



Project History - Overview



Agenda / Outline

- Project History
- Recap from Last Meeting
- Timeline Since Last Meeting
- Final Recommended Plan
- Ongoing Projects
- Next Steps
- Public Participation Moving Forward

Recap from Last Stakeholder Panel Meeting on April 25, 2012

- Administrative Order was Issued March 9, 2012 Requiring LTCP Submittal by April 30, 2012
- AO Stated LTCP Improvements to be Completed by December 31, 2027 (15 year schedule)
- Potential Effect of AO on Recommended Plan and Implementation Schedule
 - Higher financial burden due to shortened schedule
 - Potential reduction in GI control levels
 - Less opportunity to right-size improvements
 - Likely an all gray program

Recap from Last Stakeholder Panel Meeting on April 25, 2012

- Updated Draft LTCP Included Two Implementation Schedules:
 - 15-year Regulatory Agency Required Plan
 - 19-year BSA Recommended Plan
- Updated Draft LTCP Report was about to be Delivered to Regulatory Agencies on April 30, 2012 in Accordance with Administrative Order
- SEQRA Process for LTCP was in Progress
 - BSA Board designated as lead agent
 - BSA opens public comment period
 - Third round of public meetings scheduled

Agenda / Outline

- Project History
- Recap from Last Meeting
- Timeline Since Last Meeting
- Final Recommended Plan
- Ongoing Projects
- Next Steps
- Public Participation Moving Forward

Timeline Since Last Meeting - 2012

- **April 30, 2012** – Submitted Updated LTCP to Regulatory Agencies
- **May 4 - June 4, 2012** - 30-day Public Comment Period
- **May 15 - 17, 2012** – Public Meetings Held to Present Recommended Plan
- **June 18, 2012** – BSA Submitted Letter to Regulatory Agencies on LTCP and SEQRA Update
 - Identified concerns raised during public comment period (Extent of GI)
 - Noted schedule for completing SEQRA process
- **August 3, 2012** - BSA Submitted Letter to Regulatory Agencies on Public Participation Summary and SEQRA
 - Summarized Public Comments (mainly extent of GI implementation)
 - Advised Agencies of Negative Declaration
 - Identified BSA LTCP Approach (percent capture, frequency of activation, meet water body specific WQ Goals)
- **December 6, 2012** – Received Comments on LTCP from Regulatory Agencies
 - Required BSA to update the original NFA and address Plant Bypasses
 - Develop GI Master Plan to provide additional detail on GI components of the Plan
 - Identified frequency of activation as Agency preferred measure of performance
 - Provided 36 other minor comments on the LTCP document

Timeline Since Last Meeting - 2013

- **February 2013** – Various Meetings and Correspondence with Regulatory Agencies to Discuss December 2012 Agency Comments on LTCP
- **March 1, 2013** – BSA Submitted Letter to Regulatory Agencies Regarding:
 - As agreed upon at a February 12 meeting, provided work plans and schedule for developing and submitting revised No Feasible Alternatives (NFA) analysis and GI Master Plan
 - In lieu of AO required semi-annual report:
 - Status of ongoing projects
 - PCM program update on CSO 060 Green Infrastructure (GI) demonstration project
- **March 21, 2013** – Regulatory Agencies Provided Response Letter to BSA's March 1, 2013 Letter
 - Established August 15, 2013 as delivery date for updated LTCP
 - Set schedule for completion of draft NFA and GI Master Plan (Prior to August 15)
 - Provided comments on Work Plans

Timeline Since Last Meeting - 2013

- **April 12, 2013** – BSA Submitted Letter to Regulatory Agencies Regarding:
 - Requested clarification on schedule for revising LTCP
 - Response to misc. comments included in Agencies Dec. 6, 2012 Letter (referred to as Section 4 “Other Comments”)
- **April 24, 2013** – Regulatory Agencies Issued Letter to BSA
 - Established final schedule for NFA, GI Master Plan, and Revised LTCP submissions
 - NFA/GI Master Plan – August 2, 2013
 - Set Agency/BSA meeting on NFA and GI Master Plan (mid-August 2013)
 - LTCP – 60 days following receipt of written Agency comments
- **June 26, 2013** – BSA Meeting with NYSDEC only to Discuss GI Master Plan
 - Question on property ownership
 - Question on site maintenance
 - Question on PCM

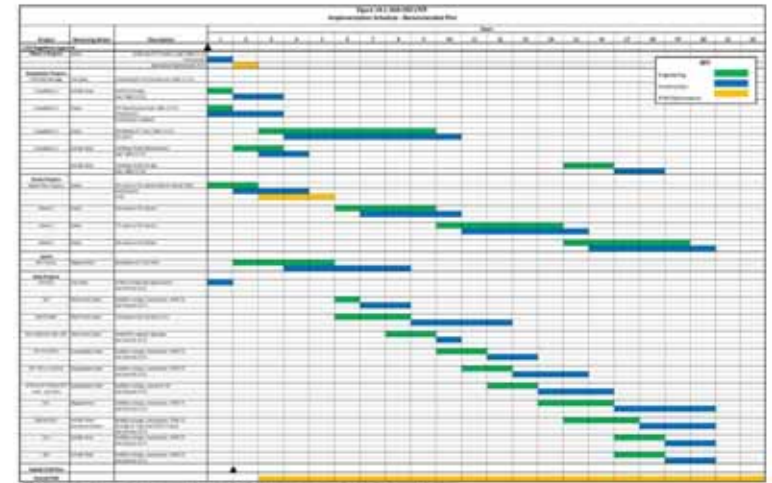
Timeline Since Last Meeting - 2013

- **August 2, 2013** – BSA Submitted Revised NFA and GI Master Plan to Regulatory Agencies
- **August 20, 2013** – Meeting with Regulatory Agencies to Discuss GI Master Plan
 - Identified use of NYS Stormwater Design manual
 - Clarification on GI modeling techniques
 - Questions on assumed soil characteristics
 - No similar meeting required for NFA
- **October 23, 2013** – USEPA Provided Final Written Comments on LTCP



Final Agency Comments on LTCP

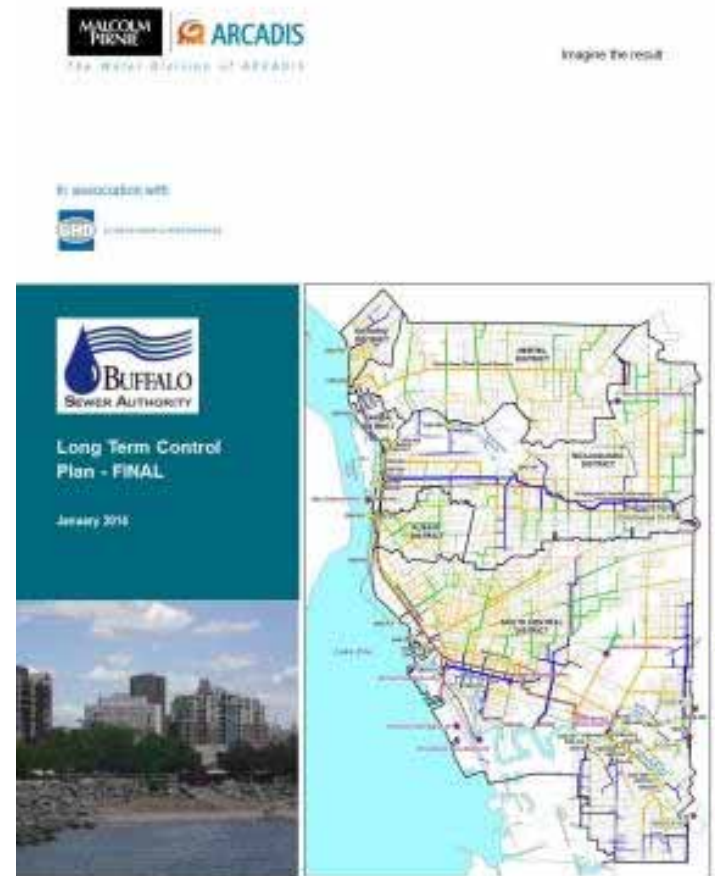
- Issued Final Approval of NFA
- Issued Final Approval of GI Master Plan
- Suggested 20-year implementation schedule from date of approval of LTCP (represented a significant victory for the BSA)
- Established Submittal Date of January 10, 2014 for BSA's Revised LTCP
- Hinted at enforcement mechanism (AO or Consent Decree)



October 2013 - December 2013 – BSA Completes Revisions to LTCP

Timeline Since Last Meeting - 2014

- **January 10, 2014** – BSA Submitted Final LTCP to Regulatory Agencies
- **March 18, 2014** – Regulatory Agencies Issued Letter Approving Revised LTCP
- **April 11, 2014** – USEPA Issued Amended Administrative Order (AO) with Approved LTCP Implementation Schedule
 - Set 20-year schedule
 - Established reporting criteria
 - Established procedures for project changes
 - Established penalties
 - Potentially eliminates need for Consent Decree
- **April 30, 2014** – BSA Acknowledges Receipt of Amended AO to Regulatory Agencies



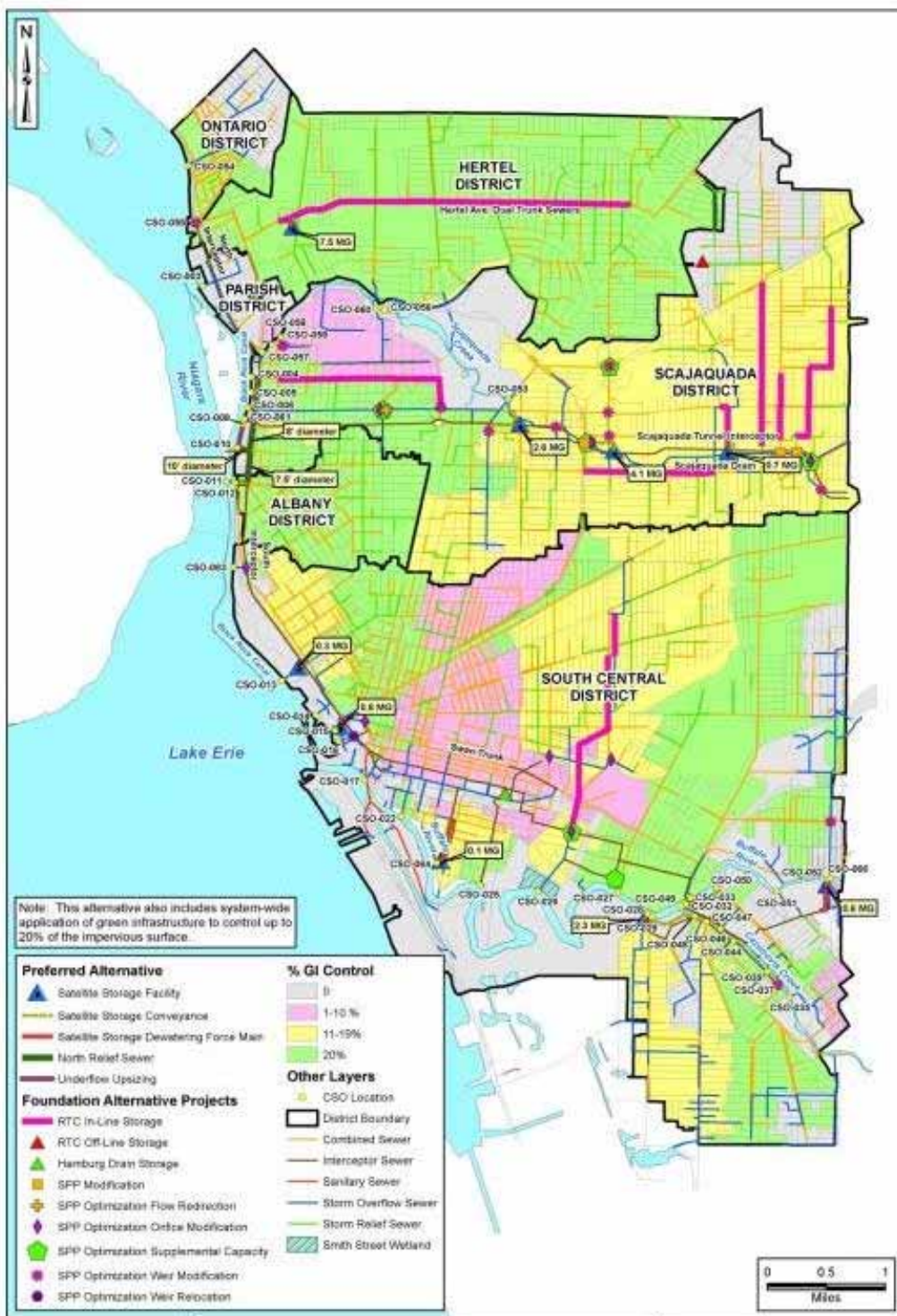
Agenda / Outline

- Project History
- Recap from Last Meeting
- Timeline Since Last Meeting
- Final Recommended Plan
- Ongoing Projects
- Next Steps
- Public Participation Moving Forward

What's Different in the 2014 Recommended Plan?

- Addition of \$41 Million of Improvements at the WWTP from the Revised NFA
 - Upgrades to existing primary clarifiers(160 MGD Capacity)
 - Disinfection of primary effluent
 - Increase secondary system capacity to 400 MGD
- Refined Target Acres of Impervious Surface Control from 1,620 Acres to Range of 1,315-1,620 Acres (GI Master Plan)
 - Acreage refined based on impact of GI at SPP level (focus GI where it will have the most benefit and still meet LTCP goals)
 - Cost held at \$92M
- Detailed 20-year Implementation Schedule

NOTE: Collection System “Gray” Improvement Projects did **not** Change



Recommended Plan

- Balance of Gray and Green Technologies
- Refined GI targets
- LOC of 2 to 9 overflows in the typical year
 - Only one Niagara River CSO at 9 OFs/yr
 - Less than 2 OFs/yr in sensitive areas (Erie Basin)
- System-wide Capture of 97.2%

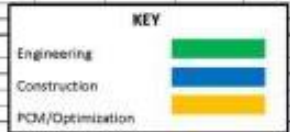
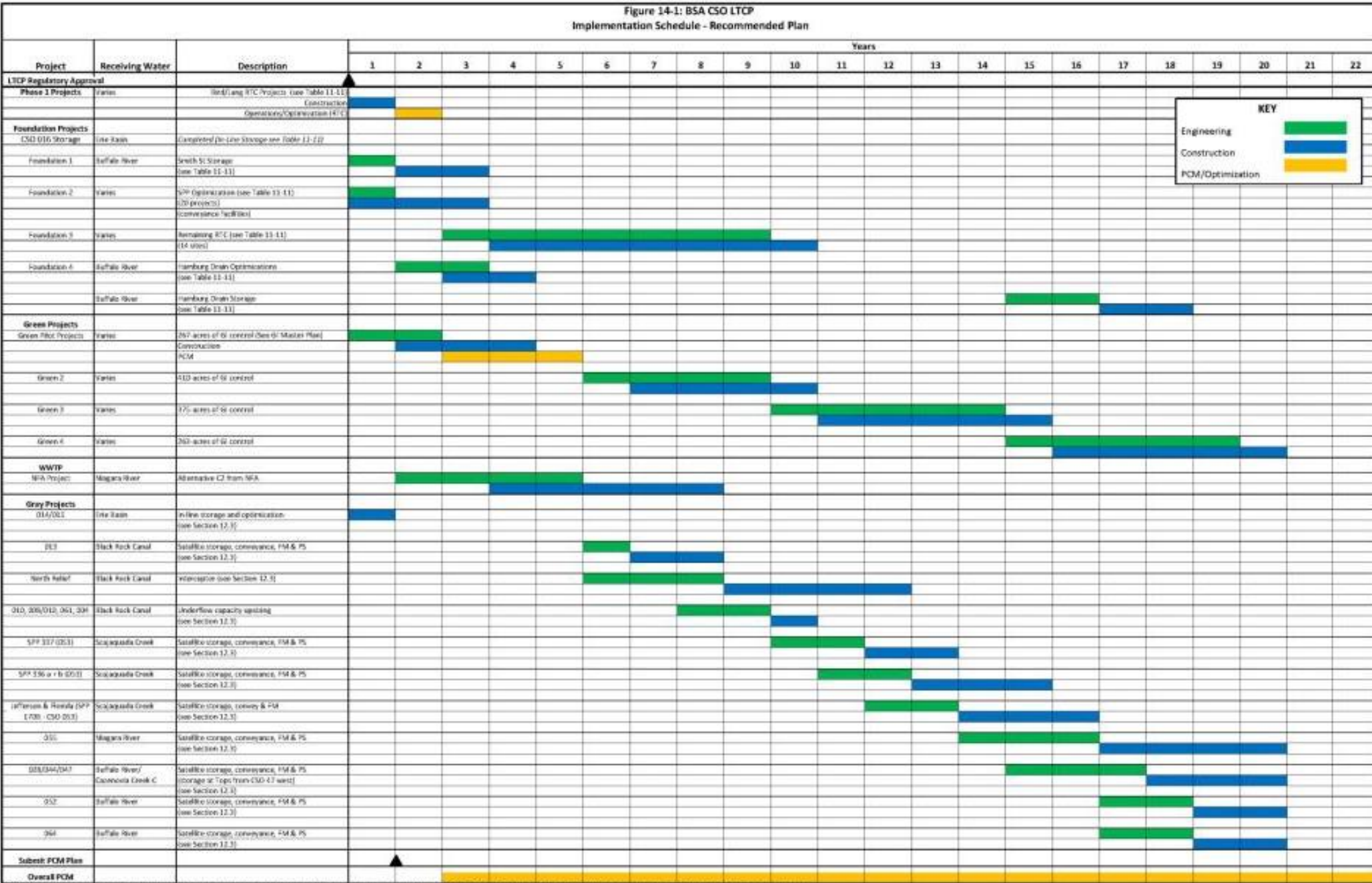
Table 12-8: Summary of System-Wide Estimated Project Costs

Receiving Water Body / Project	Project Cost ^(1,2,3)
<i>Black Rock Canal</i>	
CSO 013 (300,000 gallons)	\$3,000,000
North Relief Sewer	\$36,000,000
CSO 008/010, 061, 004 Underflow Upsizing	\$500,000
<i>Erie Basin Marina</i>	
CSO 014/015 (800,000 gallons)	\$6,700,000
<i>Cazenovia Creek – C</i>	
CSO 028/044/047 (2,300,000 gallons)	\$12,200,000
<i>Buffalo River</i>	
CSO 052 (600,000 gallons)	\$3,900,000
CSO 064 (100,000 gallons)	\$2,000,000
<i>Scajaquada Creek</i>	
Jefferson Avenue & Florida Street (SPP 170B) (2,600,000 gallons)	\$9,500,000
SPP 336 a/b (SPP165A, SPP165B, SPP 336A, SPP336B) (4,200,000 gallons)	\$11,500,000
SPP 337 (700,000 gallons)	\$4,000,000
<i>Niagara River (Cornelius Creek)</i>	
CSO 055 (7,500,000 gallons)	\$18,500,000
<i>Subtotal</i>	<i>\$107,800,000</i>
Contingency (20%)	\$21,500,000
<i>Probable Construction Cost</i>	<i>\$129,300,000</i>
Administrative and Legal (5%)	\$6,500,000
Engineering (20%)	\$26,000,000
Total Recommended Plan Cost	\$161,800,000
<i>Revised Foundation Plan Cost (for projects not already completed, see Table 11-11)</i>	<i>\$85,000,000</i>
<i>Green Infrastructure (system wide)³</i>	<i>\$92,600,000</i>
Revised Foundation Plan + Recommended Plan	\$339,400,000
<i>NFA Alternative C2 at WWTP</i>	<i>\$41,000,000</i>
System-Wide Improvements	\$380,400,000
NOTES: ¹ Year 2012 dollars. ² All Costs Rounded. ³ Planning Level Estimate. ⁴ Right-of-Way and/or land acquisition not included. ⁵ GI cost based on initial target control of 1,620 acres.	

**Total System-Wide
Estimated Project
Cost = \$380 Million
(2012 dollars)**

Implementation Schedule

Figure 14-1: BSA CSO LTCP
Implementation Schedule - Recommended Plan



NOTE: The BSA reserves the right to substitute projects within the same general timeframe as the projects listed in the schedule, either by implementing a project of equal cost value or one that achieves the same benefit as the original project.

Benefits of 2014 LTCP to the City of Buffalo

- Blend of Gray and Green Projects (2004 Plan included only Gray Infrastructure)
- Enhanced Public Participation
- SEQRA Negative Declaration (no SEQRA Previously)
- Water Quality Model Based (Limited WQM in 2004)
- Addresses CSOs in Sensitive Areas First
- Regulatory Agency Approval
- Reduction of \$180M in cost vs. 2004 Plan
- Public/Environmental Buy-in
- Addresses WWTP Bypasses



Agenda / Outline

- Project History
- Recap from Last Meeting
- Timeline Since Last Meeting
- Final Recommended Plan
- Ongoing Projects
- Next Steps
- Public Participation Moving Forward

Ongoing Projects

- **Real Time Control Demonstration Projects (Bird and Lang)**
 - Construction started March 17, 2014
 - Anticipated completion September 1, 2014
 - One year post-construction operation optimization
- **Smith Street Storage**
 - Currently under design
 - Changed from off-line storage/wetland to in-line storage/RTC
- **SPP Optimizations**
 - 20 different projects (Weir adjustments, orifice plate removal, underflow sewer upsizing)
 - Ongoing design and construction



Ongoing Projects (cont.)

- **Erie Basin In-line Storage and Optimization**

- Construction started in August 2013 and completed by February 2014
- Project cost \$1.2 million
- 50,000 gallon storage system



- **Hamburg Drain Optimizations / Storage**

- Currently under preliminary design
- Changing from a large centralized off-line storage facility
- Evaluating several smaller in-line storage, off-line storage, RTC, and sewer separation options
- Level of control will be localized at the SPP



Green Infrastructure Pilot Projects

- Target control of 267 acres of impervious area
- Vacant property demolitions
 - Pilot alternative demolition techniques
- Green Streets Projects
 - Carlton Street (porous asphalt streets)
 - Fillmore Street (porous asphalt parking lots, vacant lot improvements, redirect stormwater)
 - Ohio Street (porous asphalt shared use path and parking lanes, tree plantings, runoff reduction)



Agenda / Outline

- Project History
- Recap from Last Meeting
- Timeline Since Last Meeting
- Final Recommended Plan
- Ongoing Projects
- Next Steps
- Public Participation Moving Forward

Next Steps

- Develop Post Construction Monitoring Plan for Submittal to Agencies by March 18, 2015
- Prepare/Submit Semi-Annual Status Reports (September 1st and March 1st)
- Conduct Semi-Annual Status Meetings (September/October and March/April)
- Move Forward with Projects Scheduled for Years 1-5 of Implementation Schedule

Agenda / Outline

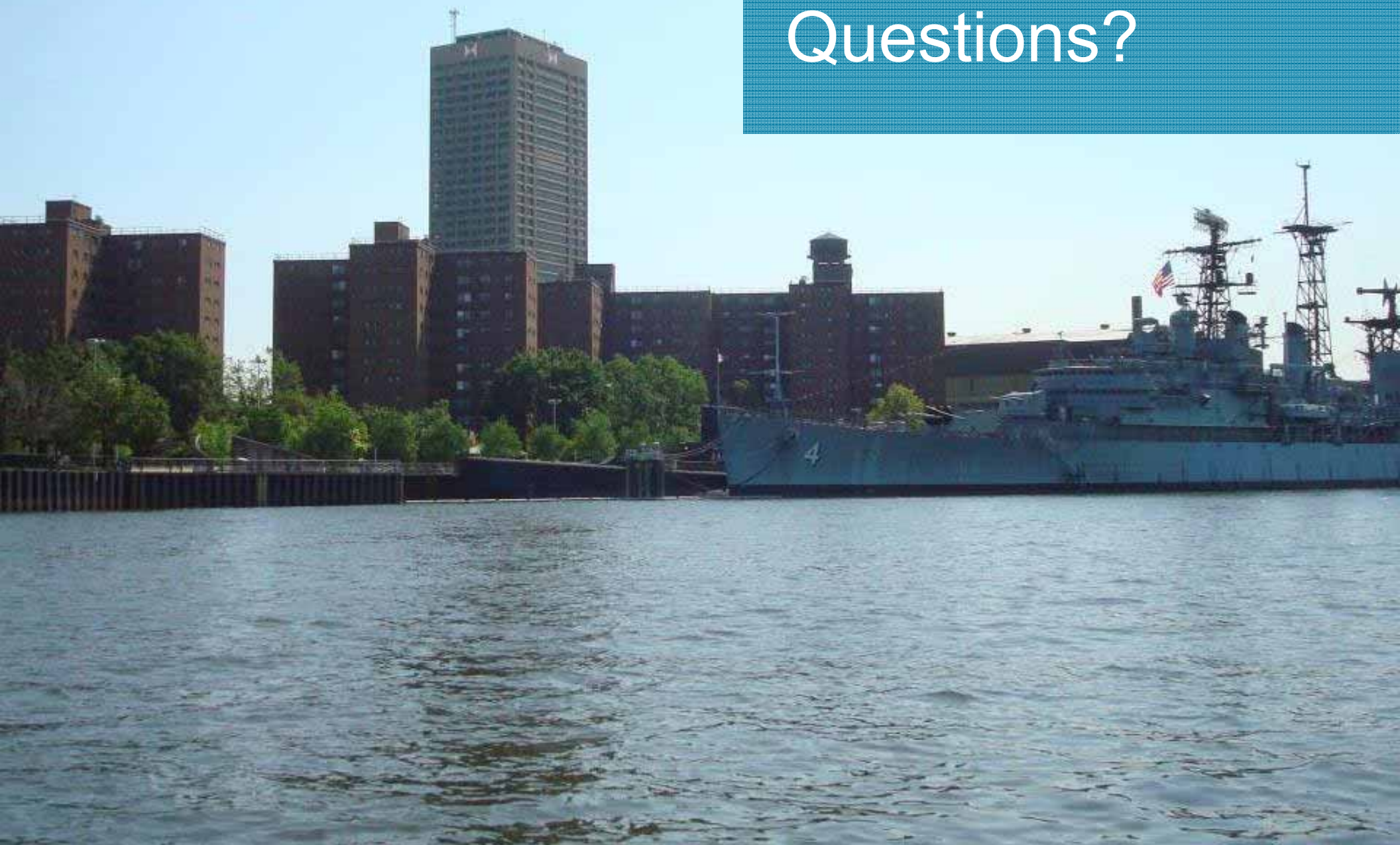
- Project History
- Recap from Last Meeting
- Timeline Since Last Meeting
- Final Recommended Plan
- Ongoing Projects
- Next Steps
- Public Participation Moving Forward

Public Participation Moving Forward

- Continue Public Involvement through Stakeholder Panel Meetings
- Define Role of Stakeholder Panel
- Routine Updates to CSO LTCP Project Website (<http://bsacsoimprovements.org/>)
- Press Releases for Specific Projects
- Project Specific SEQRA Review
- Other Suggestions?



Comments / Questions?



Attachment D to the Semi-Annual Status Report: March 2015

Monthly Monitoring Reports Submitted to NYSDEC (USEPA copy only)



CSO / SPP Inspection Report

Viewing Records 1-2198 of 2198

Report ID	Report Date	AM/PM	Weather	Inspector	Assistant	SPP ID	Conn. Open?	DWOF	Remarks	DWOF Reason	Action Taken
66221	12/30/2014	AM	Cloudy	R. Logalbo	No Assistant	SPP105	Y	N			
66263	12/30/2014	AM	Cloudy	R. Logalbo	No Assistant	SPP283	Y	N			
66262	12/30/2014	AM	Cloudy	R. Logalbo	No Assistant	SPP133	Y	N			
66261	12/30/2014	AM	Cloudy	R. Logalbo	No Assistant	SPP279	Y	N			
66260	12/30/2014	AM	Cloudy	R. Logalbo	No Assistant	SPP129	Y	N			
66259	12/30/2014	AM	Cloudy	R. Logalbo	No Assistant	SPP131	Y	N			
66258	12/30/2014	AM	Cloudy	R. Logalbo	No Assistant	SPP132	Y	N			
66257	12/30/2014	AM	Cloudy	R. Logalbo	No Assistant	SPP135A	Y	N			
66247	12/30/2014	AM	Cloudy	R. Logalbo	No Assistant	SPP209	Y	N			
66246	12/30/2014	AM	Cloudy	R. Logalbo	No Assistant	SPP137	Y	N			
66245	12/30/2014	AM	Cloudy	R. Logalbo	No Assistant	SPP136A	Y	N			
66244	12/30/2014	AM	Cloudy	R. Logalbo	No Assistant	SPP322	Y	N			
66240	12/30/2014	AM	Cloudy	R. Logalbo	No Assistant	SPP211	Y	N			
66239	12/30/2014	AM	Cloudy	R. Logalbo	No Assistant	SPP212	Y	N			
66238	12/30/2014	AM	Cloudy	R. Logalbo	No Assistant	SPP291	Y	N			
66237	12/30/2014	AM	Cloudy	R. Logalbo	No Assistant	SPP292	Y	N			
66236	12/30/2014	AM	Cloudy	R. Logalbo	No Assistant	SPP293	Y	N			
66235	12/30/2014	AM	Cloudy	R. Logalbo	No Assistant	SPP294	Y	N			
66234	12/30/2014	AM	Cloudy	R. Logalbo	No Assistant	SPP295	Y	N			
66233	12/30/2014	AM	Cloudy	R. Logalbo	No Assistant	SPP329	Y	N			
66226	12/30/2014	AM	Cloudy	R. Logalbo	No Assistant	SPP307	Y	N			

66225	12/30/2014	AM	Cloudy	R. Logalbo	No Assistant	SPP106	Y	N			
66184	12/22/2014	AM	Cloudy	R. Logalbo	No Assistant	SPP310	Y	N			
66219	12/22/2014	AM	Cloudy	R. Logalbo	No Assistant	SPP121	Y	N			
66218	12/22/2014	AM	Cloudy	R. Logalbo	No Assistant	SPP122	Y	N			
66217	12/22/2014	AM	Cloudy	R. Logalbo	No Assistant	SPP311	Y	N			
66212	12/22/2014	AM	Cloudy	R. Logalbo	No Assistant	SPP107	Y	N			
66211	12/22/2014	AM	Cloudy	R. Logalbo	No Assistant	SPP107A	Y	N			
66210	12/22/2014	AM	Cloudy	R. Logalbo	No Assistant	SPP223	Y	N			
66209	12/22/2014	AM	Cloudy	R. Logalbo	No Assistant	SPP224	Y	N			
66208	12/22/2014	AM	Cloudy	R. Logalbo	No Assistant	SPP225	Y	N			
66207	12/22/2014	AM	Cloudy	R. Logalbo	No Assistant	SPP226	Y	N			
66206	12/22/2014	AM	Cloudy	R. Logalbo	No Assistant	SPP227	Y	N			
66205	12/22/2014	AM	Cloudy	R. Logalbo	No Assistant	SPP227A	Y	N			
66194	12/22/2014	AM	Cloudy	R. Logalbo	No Assistant	SPP220	Y	N			
66193	12/22/2014	AM	Cloudy	R. Logalbo	No Assistant	SPP221	Y	N			
66192	12/22/2014	AM	Cloudy	R. Logalbo	No Assistant	SPP222	Y	N			
66191	12/22/2014	AM	Cloudy	R. Logalbo	No Assistant	SPP109	Y	N			
66190	12/22/2014	AM	Cloudy	R. Logalbo	No Assistant	SPP114	Y	N			
66189	12/22/2014	AM	Cloudy	R. Logalbo	No Assistant	SPP113	Y	N			
66188	12/22/2014	AM	Cloudy	R. Logalbo	No Assistant	SPP308	Y	N			
66187	12/22/2014	AM	Cloudy	R. Logalbo	No Assistant	SPP308A	Y	N			
66186	12/22/2014	AM	Cloudy	R. Logalbo	No Assistant	SPP308B	Y	N			
66185	12/22/2014	AM	Cloudy	R. Logalbo	No Assistant	SPP309	Y	N			
66093	12/19/2014	AM	Cloudy	R. Logalbo	No Assistant	SPP218	Y	N			
66176	12/19/2014	AM	Cloudy	R. Logalbo	No Assistant	SPP145	Y	N			
66175	12/19/2014	AM	Cloudy	R. Logalbo	No Assistant	SPP138	Y	N			
				R.	No						

[illegible]

[illegible]

66068	12/18/2014	AM	Pt. Cloudy	R. Logalbo	No Assistant	SPP078	Y	N			
66067	12/18/2014	AM	Pt. Cloudy	R. Logalbo	No Assistant	SPP079	Y	N			
66064	12/18/2014	AM	Pt. Cloudy	R. Logalbo	No Assistant	SPP080	Y	N			
66063	12/18/2014	AM	Pt. Cloudy	R. Logalbo	No Assistant	SPP077	Y	N			
66060	12/18/2014	AM	Pt. Cloudy	R. Logalbo	No Assistant	SPP073	Y	N			
66059	12/18/2014	AM	Pt. Cloudy	R. Logalbo	No Assistant	SPP074	Y	N			
66056	12/18/2014	AM	Pt. Cloudy	R. Logalbo	No Assistant	SPP075	Y	N			
66055	12/18/2014	AM	Pt. Cloudy	R. Logalbo	No Assistant	SPP072	Y	N			
66052	12/18/2014	AM	Pt. Cloudy	R. Logalbo	No Assistant	SPP070	Y	N			
66000	12/17/2014	AM	Pt. Cloudy	R. Logalbo	No Assistant	SPP206B	Y	N			
66049	12/17/2014	AM	Pt. Cloudy	R. Logalbo	No Assistant	SPP069	Y	N			
66048	12/17/2014	AM	Pt. Cloudy	R. Logalbo	No Assistant	SPP138	Y	N			
66045	12/17/2014	AM	Pt. Cloudy	R. Logalbo	No Assistant	SPP145	Y	N			
66043	12/17/2014	AM	Pt. Cloudy	R. Logalbo	No Assistant	SPP130	Y	N			
66042	12/17/2014	AM	Pt. Cloudy	R. Logalbo	No Assistant	SPP128	Y	N			
66039	12/17/2014	AM	Pt. Cloudy	R. Logalbo	No Assistant	SPP067	Y	N			
66038	12/17/2014	AM	Pt. Cloudy	R. Logalbo	No Assistant	SPP055	Y	N			
66035	12/17/2014	AM	Pt. Cloudy	R. Logalbo	No Assistant	SPP056	Y	N			
66034	12/17/2014	AM	Pt. Cloudy	R. Logalbo	No Assistant	SPP054	Y	N			
66032	12/17/2014	AM	Pt. Cloudy	R. Logalbo	No Assistant	SPP059	Y	N			
66029	12/17/2014	AM	Pt. Cloudy	R. Logalbo	No Assistant	SPP065	Y	N			
66028	12/17/2014	AM	Pt. Cloudy	R. Logalbo	No Assistant	SPP053	Y	N			
66025	12/17/2014	AM	Pt. Cloudy	R. Logalbo	No Assistant	SPP052	Y	N			
66024	12/17/2014	AM	Pt. Cloudy	R. Logalbo	No Assistant	SPP051	Y	N			
66021	12/17/2014	AM	Pt. Cloudy	R. Logalbo	No Assistant	SPP146	Y	N			
66020	12/17/2014	AM	Pt. Cloudy	R. Logalbo	No Assistant	SPP051A	Y	N			

[illegible]

65965	12/16/2014	AM	Pt. Cloudy	R. Logalbo	No Assistant	SPP204	Y	N			
65964	12/16/2014	AM	Pt. Cloudy	R. Logalbo	No Assistant	SPP165A	Y	N			
65961	12/16/2014	AM	Pt. Cloudy	R. Logalbo	No Assistant	SPP163	Y	N			
65960	12/16/2014	AM	Pt. Cloudy	R. Logalbo	No Assistant	SPP336B	Y	N			
65914	12/15/2014	AM	Pt. Cloudy	R. Logalbo	No Assistant	SPP331	Y	N			
65954	12/15/2014	AM	Pt. Cloudy	R. Logalbo	No Assistant	SPP244	Y	N			
65951	12/15/2014	AM	Pt. Cloudy	R. Logalbo	No Assistant	SPP245	Y	N			
65950	12/15/2014	AM	Pt. Cloudy	R. Logalbo	No Assistant	SPP177	Y	N			
65947	12/15/2014	AM	Pt. Cloudy	R. Logalbo	No Assistant	SPP176	Y	N			
65946	12/15/2014	AM	Pt. Cloudy	R. Logalbo	No Assistant	SPP175	Y	N			
65943	12/15/2014	AM	Pt. Cloudy	R. Logalbo	No Assistant	SPP345	Y	N			
65942	12/15/2014	AM	Pt. Cloudy	R. Logalbo	No Assistant	SPP247	Y	N			
65939	12/15/2014	AM	Pt. Cloudy	R. Logalbo	No Assistant	SPP335B	Y	N			
65938	12/15/2014	AM	Pt. Cloudy	R. Logalbo	No Assistant	SPP335A	Y	N			
65935	12/15/2014	AM	Pt. Cloudy	R. Logalbo	No Assistant	SPP334B	Y	N			
65934	12/15/2014	AM	Pt. Cloudy	R. Logalbo	No Assistant	SPP334A	Y	N			
65931	12/15/2014	AM	Pt. Cloudy	R. Logalbo	No Assistant	SPP229A	Y	N			
65930	12/15/2014	AM	Pt. Cloudy	R. Logalbo	No Assistant	SPP229	Y	N			
65927	12/15/2014	AM	Pt. Cloudy	R. Logalbo	No Assistant	SPP333	Y	N			
65926	12/15/2014	AM	Pt. Cloudy	R. Logalbo	No Assistant	SPP170B	Y	N			
65923	12/15/2014	AM	Pt. Cloudy	R. Logalbo	No Assistant	SPP170A	Y	N			
65922	12/15/2014	AM	Pt. Cloudy	R. Logalbo	No Assistant	SPP178	Y	N			
65919	12/15/2014	AM	Pt. Cloudy	R. Logalbo	No Assistant	SPP179	Y	N			
65918	12/15/2014	AM	Pt. Cloudy	R. Logalbo	No Assistant	SPP332	Y	N			
65915	12/15/2014	AM	Pt. Cloudy	R. Logalbo	No Assistant	SPP180	Y	N			
66222	12/10/2014	AM	Cloudy	R. Logalbo	No Assistant	SPP105	Y	N			

[illegible]

66213	12/8/2014	AM	Cloudy	R. Logalbo	No Assistant	SPP107	Y	N			
66204	12/8/2014	AM	Cloudy	R. Logalbo	No Assistant	SPP227A	Y	N			
66203	12/8/2014	AM	Cloudy	R. Logalbo	No Assistant	SPP227	Y	N			
66202	12/8/2014	AM	Cloudy	R. Logalbo	No Assistant	SPP226	Y	N			
66201	12/8/2014	AM	Cloudy	R. Logalbo	No Assistant	SPP225	Y	N			
66200	12/8/2014	AM	Cloudy	R. Logalbo	No Assistant	SPP224	Y	N			
66199	12/8/2014	AM	Cloudy	R. Logalbo	No Assistant	SPP223	Y	N			
66198	12/8/2014	AM	Cloudy	R. Logalbo	No Assistant	SPP109	Y	N			
66197	12/8/2014	AM	Cloudy	R. Logalbo	No Assistant	SPP222	Y	N			
66196	12/8/2014	AM	Cloudy	R. Logalbo	No Assistant	SPP221	Y	N			
66195	12/8/2014	AM	Cloudy	R. Logalbo	No Assistant	SPP220	Y	N			
66183	12/8/2014	AM	Cloudy	R. Logalbo	No Assistant	SPP310	Y	N			
66182	12/8/2014	AM	Cloudy	R. Logalbo	No Assistant	SPP309	Y	N			
66181	12/8/2014	AM	Cloudy	R. Logalbo	No Assistant	SPP308B	Y	N			
66180	12/8/2014	AM	Cloudy	R. Logalbo	No Assistant	SPP308A	Y	N			
66179	12/8/2014	AM	Cloudy	R. Logalbo	No Assistant	SPP308	Y	N			
66178	12/8/2014	AM	Cloudy	R. Logalbo	No Assistant	SPP114	Y	N			
66092	12/5/2014	AM	Cloudy	R. Logalbo	No Assistant	SPP218	Y	N			
66174	12/5/2014	AM	Cloudy	R. Logalbo	No Assistant	SPP138	Y	N			
66173	12/5/2014	AM	Cloudy	R. Logalbo	No Assistant	SPP145	Y	N			
66172	12/5/2014	AM	Cloudy	R. Logalbo	No Assistant	SPP326	Y	N			
66171	12/5/2014	AM	Cloudy	R. Logalbo	No Assistant	SPP282	Y	N			
66170	12/5/2014	AM	Cloudy	R. Logalbo	No Assistant	SPP281	Y	N			
66164	12/5/2014	AM	Cloudy	R. Logalbo	No Assistant	SPP097	Y	N			
66163	12/5/2014	AM	Cloudy	R. Logalbo	No Assistant	SPP097A	Y	N			
66162	12/5/2014	AM	Cloudy	R. Logalbo	No Assistant	SPP126	Y	N			

[illegible]

66107	12/5/2014	AM	Cloudy	R. Logalbo	No Assistant	SPP320	Y	N			
66104	12/5/2014	AM	Cloudy	R. Logalbo	No Assistant	SPP319	Y	N			
66103	12/5/2014	AM	Cloudy	R. Logalbo	No Assistant	SPP318	Y	N			
66100	12/5/2014	AM	Cloudy	R. Logalbo	No Assistant	SPP317	Y	N			
66099	12/5/2014	AM	Cloudy	R. Logalbo	No Assistant	SPP316	Y	N			
66096	12/5/2014	AM	Cloudy	R. Logalbo	No Assistant	SPP315	Y	N			
66095	12/5/2014	AM	Cloudy	R. Logalbo	No Assistant	SPP314	Y	N			
66050	12/4/2014	AM	Pt. Cloudy	R. Logalbo	No Assistant	SPP069	Y	N			
66091	12/4/2014	AM	Pt. Cloudy	R. Logalbo	No Assistant	SPP094	Y	N			
66089	12/4/2014	AM	Pt. Cloudy	R. Logalbo	No Assistant	SPP090	Y	N			
66087	12/4/2014	AM	Pt. Cloudy	R. Logalbo	No Assistant	SPP091	Y	N			
66084	12/4/2014	AM	Pt. Cloudy	R. Logalbo	No Assistant	SPP088	Y	N			
66083	12/4/2014	AM	Pt. Cloudy	R. Logalbo	No Assistant	SPP087	Y	N			
66080	12/4/2014	AM	Pt. Cloudy	R. Logalbo	No Assistant	SPP089	Y	N			
66079	12/4/2014	AM	Pt. Cloudy	R. Logalbo	No Assistant	SPP084	Y	N			
66077	12/4/2014	AM	Pt. Cloudy	R. Logalbo	No Assistant	SPP086	Y	N			
66074	12/4/2014	AM	Pt. Cloudy	R. Logalbo	No Assistant	SPP085	Y	N			
66073	12/4/2014	AM	Pt. Cloudy	R. Logalbo	No Assistant	SPP082	Y	N			
66070	12/4/2014	AM	Pt. Cloudy	R. Logalbo	No Assistant	SPP081	Y	N			
66069	12/4/2014	AM	Pt. Cloudy	R. Logalbo	No Assistant	SPP078	Y	N			
66066	12/4/2014	AM	Pt. Cloudy	R. Logalbo	No Assistant	SPP079	Y	N			
66065	12/4/2014	AM	Pt. Cloudy	R. Logalbo	No Assistant	SPP080	Y	N			
66062	12/4/2014	AM	Pt. Cloudy	R. Logalbo	No Assistant	SPP077	Y	N			
66061	12/4/2014	AM	Pt. Cloudy	R. Logalbo	No Assistant	SPP073	Y	N			
66058	12/4/2014	AM	Pt. Cloudy	R. Logalbo	No Assistant	SPP074	Y	N			
66057	12/4/2014	AM	Pt. Cloudy	R. Logalbo	No Assistant	SPP075	Y	N			

[illegible]

66002	12/3/2014	AM	Pt. Cloudy	R. Logalbo	No Assistant	SPP206A	Y	N			
65999	12/3/2014	AM	Pt. Cloudy	R. Logalbo	No Assistant	SPP206B	Y	N			
65956	12/2/2014	AM	Pt. Cloudy	R. Logalbo	No Assistant	SPP165B	Y	N			
65995	12/2/2014	AM	Pt. Cloudy	R. Logalbo	No Assistant	SPP342B	Y	N			
65994	12/2/2014	AM	Pt. Cloudy	R. Logalbo	No Assistant	SPP342A	Y	N			
65991	12/2/2014	AM	Pt. Cloudy	R. Logalbo	No Assistant	SPP341A	Y	N			
65990	12/2/2014	AM	Pt. Cloudy	R. Logalbo	No Assistant	SPP340	Y	N			
65987	12/2/2014	AM	Pt. Cloudy	R. Logalbo	No Assistant	SPP339	Y	N			
65986	12/2/2014	AM	Pt. Cloudy	R. Logalbo	No Assistant	SPP156B	Y	N			
65983	12/2/2014	AM	Pt. Cloudy	R. Logalbo	No Assistant	SPP156A	Y	N			
65982	12/2/2014	AM	Pt. Cloudy	R. Logalbo	No Assistant	SPP157	Y	N			
65979	12/2/2014	AM	Pt. Cloudy	R. Logalbo	No Assistant	SPP338	Y	N			
65978	12/2/2014	AM	Pt. Cloudy	R. Logalbo	No Assistant	SPP337	Y	N			
65975	12/2/2014	AM	Pt. Cloudy	R. Logalbo	No Assistant	SPP200B	Y	N			
65974	12/2/2014	AM	Pt. Cloudy	R. Logalbo	No Assistant	SPP200A	Y	N			
65971	12/2/2014	AM	Pt. Cloudy	R. Logalbo	No Assistant	SPP201	Y	N			
65970	12/2/2014	AM	Pt. Cloudy	R. Logalbo	No Assistant	SPP202	Y	N			
65967	12/2/2014	AM	Pt. Cloudy	R. Logalbo	No Assistant	SPP203	Y	N			
65966	12/2/2014	AM	Pt. Cloudy	R. Logalbo	No Assistant	SPP204	Y	N			
65963	12/2/2014	AM	Pt. Cloudy	R. Logalbo	No Assistant	SPP165A	Y	N			
65962	12/2/2014	AM	Pt. Cloudy	R. Logalbo	No Assistant	SPP163	Y	N			
65959	12/2/2014	AM	Pt. Cloudy	R. Logalbo	No Assistant	SPP336B	Y	N			
65958	12/2/2014	AM	Pt. Cloudy	R. Logalbo	No Assistant	SPP164	Y	N			
65957	12/2/2014	AM	Pt. Cloudy	R. Logalbo	No Assistant	SPP165	Y	N			
65913	12/1/2014	AM	Pt. Cloudy	R. Logalbo	No Assistant	SPP331	Y	N			
65953	12/1/2014	AM	Pt. Cloudy	R. Logalbo	No Assistant	SPP244	Y	N			

[illegible]

65906	11/26/2014	AM	Cloudy	R. Logalbo	No Assistant	SPP019	Y	N			
65905	11/26/2014	AM	Cloudy	R. Logalbo	No Assistant	SPP243	Y	N			
65904	11/26/2014	AM	Cloudy	R. Logalbo	No Assistant	SPP017	Y	N			
65903	11/26/2014	AM	Cloudy	R. Logalbo	No Assistant	SPP018	Y	N			
65902	11/26/2014	AM	Cloudy	R. Logalbo	No Assistant	SPP014B	Y	N			
65877	11/24/2014	AM	Rain	R. Logalbo	No Assistant	SPP193	Y	N			
65900	11/24/2014	AM	Rain	R. Logalbo	No Assistant	SPP013	Y	N			
65899	11/24/2014	AM	Rain	R. Logalbo	No Assistant	SPP215	Y	N			
65898	11/24/2014	AM	Rain	R. Logalbo	No Assistant	SPP214	Y	N			
65897	11/24/2014	AM	Rain	R. Logalbo	No Assistant	SPP213	Y	N			
65896	11/24/2014	AM	Rain	R. Logalbo	No Assistant	SPP195	Y	N			
65895	11/24/2014	AM	Rain	R. Logalbo	No Assistant	SPP011	Y	N			
65894	11/24/2014	AM	Rain	R. Logalbo	No Assistant	SPP010	Y	N			
65893	11/24/2014	AM	Rain	R. Logalbo	No Assistant	SPP009	Y	N			
65892	11/24/2014	AM	Rain	R. Logalbo	No Assistant	SPP008	Y	N			
65891	11/24/2014	AM	Rain	R. Logalbo	No Assistant	SPP185	Y	N			
65890	11/24/2014	AM	Rain	R. Logalbo	No Assistant	SPP184	Y	N			
65889	11/24/2014	AM	Rain	R. Logalbo	No Assistant	SPP007	Y	N			
65888	11/24/2014	AM	Rain	R. Logalbo	No Assistant	SPP005	Y	N			
65887	11/24/2014	AM	Rain	R. Logalbo	No Assistant	SPP004	Y	N			
65886	11/24/2014	AM	Rain	R. Logalbo	No Assistant	SPP186	Y	N			
65885	11/24/2014	AM	Rain	R. Logalbo	No Assistant	SPP003	Y	N			
65884	11/24/2014	AM	Rain	R. Logalbo	No Assistant	SPP001	Y	N			
65883	11/24/2014	AM	Rain	R. Logalbo	No Assistant	SPP188	Y	N			
65882	11/24/2014	AM	Rain	R. Logalbo	No Assistant	SPP189	Y	N			
65881	11/24/2014	AM	Rain	R. Logalbo	No Assistant	SPP190	Y	N			

[illegible]

[illegible]

65828	11/14/2014	AM	Sunny	R. Logalbo	No Assistant	SPP125	Y	N			
65827	11/14/2014	AM	Sunny	R. Logalbo	No Assistant	SPP125A	Y	N			
65826	11/14/2014	AM	Sunny	R. Logalbo	No Assistant	SPP126	Y	N			
65825	11/14/2014	AM	Sunny	R. Logalbo	No Assistant	SPP124	Y	N			
65824	11/14/2014	AM	Sunny	R. Logalbo	No Assistant	SPP208	Y	N			
65823	11/14/2014	AM	Sunny	R. Logalbo	No Assistant	SPP123A	Y	N			
65822	11/14/2014	AM	Sunny	R. Logalbo	No Assistant	SPP123C	Y	N			
65821	11/14/2014	AM	Sunny	R. Logalbo	No Assistant	SPP123B	Y	N			
65820	11/14/2014	AM	Sunny	R. Logalbo	No Assistant	SPP115	Y	N			
65819	11/14/2014	AM	Sunny	R. Logalbo	No Assistant	SPP118	Y	N			
65818	11/14/2014	AM	Sunny	R. Logalbo	No Assistant	SPP119	Y	N			
65817	11/14/2014	AM	Sunny	R. Logalbo	No Assistant	SPP120	Y	N			
65816	11/14/2014	AM	Sunny	R. Logalbo	No Assistant	SPP099	Y	N			
65815	11/14/2014	AM	Sunny	R. Logalbo	No Assistant	SPP100	Y	N			
65814	11/14/2014	AM	Sunny	R. Logalbo	No Assistant	SPP101	Y	N			
65813	11/14/2014	AM	Sunny	R. Logalbo	No Assistant	SPP103	Y	N			
65769	11/13/2014	AM	Snow	R. Logalbo	No Assistant	SPP069	Y	N			
65790	11/13/2014	AM	Snow	R. Logalbo	No Assistant	SPP094	Y	N			
65789	11/13/2014	AM	Snow	R. Logalbo	No Assistant	SPP092	Y	N			
65788	11/13/2014	AM	Snow	R. Logalbo	No Assistant	SPP091	Y	N			
65787	11/13/2014	AM	Snow	R. Logalbo	No Assistant	SPP088	Y	N			
65786	11/13/2014	AM	Snow	R. Logalbo	No Assistant	SPP090	Y	N			
65785	11/13/2014	AM	Snow	R. Logalbo	No Assistant	SPP087	Y	N			
65784	11/13/2014	AM	Snow	R. Logalbo	No Assistant	SPP089	Y	N			
65783	11/13/2014	AM	Snow	R. Logalbo	No Assistant	SPP086	Y	N			
65782	11/13/2014	AM	Snow	R. Logalbo	No Assistant	SPP085	Y	N			

[illegible]

65798	11/12/2014	AM	Snow	R. Logalbo	No Assistant	SPP277	Y	N			
65797	11/12/2014	AM	Snow	R. Logalbo	No Assistant	SPP149	Y	N			
65796	11/12/2014	AM	Snow	R. Logalbo	No Assistant	SPP148	Y	N			
65795	11/12/2014	AM	Snow	R. Logalbo	No Assistant	SPP218	Y	N			
65794	11/12/2014	AM	Snow	R. Logalbo	No Assistant	SPP316	Y	N			
65793	11/12/2014	AM	Snow	R. Logalbo	No Assistant	SPP315	Y	N			
65792	11/12/2014	AM	Snow	R. Logalbo	No Assistant	SPP314	Y	N			
65744	11/7/2014	AM	Pt. Cloudy	R. Logalbo	No Assistant	SPP304	Y	N			
65768	11/7/2014	AM	Pt. Cloudy	R. Logalbo	No Assistant	SPP145	Y	N			
65767	11/7/2014	AM	Pt. Cloudy	R. Logalbo	No Assistant	SPP138	Y	N			
65766	11/7/2014	AM	Pt. Cloudy	R. Logalbo	No Assistant	SPP067	Y	N			
65765	11/7/2014	AM	Pt. Cloudy	R. Logalbo	No Assistant	SPP058	Y	N			
65764	11/7/2014	AM	Pt. Cloudy	R. Logalbo	No Assistant	SPP055	Y	N			
65763	11/7/2014	AM	Pt. Cloudy	R. Logalbo	No Assistant	SPP065	Y	N			
65762	11/7/2014	AM	Pt. Cloudy	R. Logalbo	No Assistant	SPP059	Y	N			
65761	11/7/2014	AM	Pt. Cloudy	R. Logalbo	No Assistant	SPP054	Y	N			
65760	11/7/2014	AM	Pt. Cloudy	R. Logalbo	No Assistant	SPP053	Y	N			
65759	11/7/2014	AM	Pt. Cloudy	R. Logalbo	No Assistant	SPP130	Y	N			
65758	11/7/2014	AM	Pt. Cloudy	R. Logalbo	No Assistant	SPP146	Y	N			
65757	11/7/2014	AM	Pt. Cloudy	R. Logalbo	No Assistant	SPP052	Y	N			
65756	11/7/2014	AM	Pt. Cloudy	R. Logalbo	No Assistant	SPP051	Y	N			
65755	11/7/2014	AM	Pt. Cloudy	R. Logalbo	No Assistant	SPP051A	Y	N			
65754	11/7/2014	AM	Pt. Cloudy	R. Logalbo	No Assistant	SPP050	Y	N			
65753	11/7/2014	AM	Pt. Cloudy	R. Logalbo	No Assistant	SPP327	Y	N			
65752	11/7/2014	AM	Pt. Cloudy	R. Logalbo	No Assistant	SPP048	Y	N			
65751	11/7/2014	AM	Pt. Cloudy	R. Logalbo	No Assistant	SPP047	Y	N			

[illegible]

65724	11/6/2014	AM	Cloudy	R. Logalbo	No Assistant	SPP336A	Y	N			
65723	11/6/2014	AM	Cloudy	R. Logalbo	No Assistant	SPP336B	Y	N			
65722	11/6/2014	AM	Cloudy	R. Logalbo	No Assistant	SPP165	Y	N			
65721	11/6/2014	AM	Cloudy	R. Logalbo	No Assistant	SPP164	Y	N			
65672	11/3/2014	AM	Sunny	R. Logalbo	No Assistant	SPP183	Y	N			
65719	11/3/2014	AM	Sunny	R. Logalbo	No Assistant	SPP175	Y	N			
65718	11/3/2014	AM	Sunny	R. Logalbo	No Assistant	SPP176	Y	N			
65717	11/3/2014	AM	Sunny	R. Logalbo	No Assistant	SPP177	Y	N			
65716	11/3/2014	AM	Sunny	R. Logalbo	No Assistant	SPP247	Y	N			
65715	11/3/2014	AM	Sunny	R. Logalbo	No Assistant	SPP345	Y	N			
65714	11/3/2014	AM	Sunny	R. Logalbo	No Assistant	SPP335B	Y	N			
65713	11/3/2014	AM	Sunny	R. Logalbo	No Assistant	SPP335A	Y	N			
65712	11/3/2014	AM	Sunny	R. Logalbo	No Assistant	SPP334B	Y	N			
65711	11/3/2014	AM	Sunny	R. Logalbo	No Assistant	SPP334A	Y	N			
65710	11/3/2014	AM	Sunny	R. Logalbo	No Assistant	SPP229A	Y	N			
65709	11/3/2014	AM	Sunny	R. Logalbo	No Assistant	SPP229	Y	N			
65708	11/3/2014	AM	Sunny	R. Logalbo	No Assistant	SPP333	Y	N			
65707	11/3/2014	AM	Sunny	R. Logalbo	No Assistant	SPP170B	Y	N			
65706	11/3/2014	AM	Sunny	R. Logalbo	No Assistant	SPP170A	Y	N			
65705	11/3/2014	AM	Sunny	R. Logalbo	No Assistant	SPP178	Y	N			
65704	11/3/2014	AM	Sunny	R. Logalbo	No Assistant	SPP179	Y	N			
65703	11/3/2014	AM	Sunny	R. Logalbo	No Assistant	SPP332	Y	N			
65702	11/3/2014	AM	Sunny	R. Logalbo	No Assistant	SPP180	Y	N			
65701	11/3/2014	AM	Sunny	R. Logalbo	No Assistant	SPP331	Y	N			
65700	11/3/2014	AM	Sunny	R. Logalbo	No Assistant	SPP024	Y	N			
65699	11/3/2014	AM	Sunny	R. Logalbo	No Assistant	SPP023	Y	N			

[illegible]

65652	10/30/2014	AM	Pt. Cloudy	R. Logalbo	No Assistant	SPP105	Y	N			
65671	10/30/2014	AM	Pt. Cloudy	R. Logalbo	No Assistant	SPP209	Y	N			
65670	10/30/2014	AM	Pt. Cloudy	R. Logalbo	No Assistant	SPP129	Y	N			
65669	10/30/2014	AM	Pt. Cloudy	R. Logalbo	No Assistant	SPP131	Y	N			
65668	10/30/2014	AM	Pt. Cloudy	R. Logalbo	No Assistant	SPP132	Y	N			
65667	10/30/2014	AM	Pt. Cloudy	R. Logalbo	No Assistant	SPP135A	Y	N			
65666	10/30/2014	AM	Pt. Cloudy	R. Logalbo	No Assistant	SPP136A	Y	N			
65665	10/30/2014	AM	Pt. Cloudy	R. Logalbo	No Assistant	SPP133	Y	N			
65664	10/30/2014	AM	Pt. Cloudy	R. Logalbo	No Assistant	SPP279	Y	N			
65663	10/30/2014	AM	Pt. Cloudy	R. Logalbo	No Assistant	SPP322	Y	N			
65662	10/30/2014	AM	Pt. Cloudy	R. Logalbo	No Assistant	SPP212	Y	N			
65661	10/30/2014	AM	Pt. Cloudy	R. Logalbo	No Assistant	SPP211	Y	N			
65660	10/30/2014	AM	Pt. Cloudy	R. Logalbo	No Assistant	SPP291	Y	N			
65659	10/30/2014	AM	Pt. Cloudy	R. Logalbo	No Assistant	SPP292	Y	N			
65658	10/30/2014	AM	Pt. Cloudy	R. Logalbo	No Assistant	SPP293	Y	N			
65657	10/30/2014	AM	Pt. Cloudy	R. Logalbo	No Assistant	SPP294	Y	N			
65656	10/30/2014	AM	Pt. Cloudy	R. Logalbo	No Assistant	SPP295	Y	N			
65655	10/30/2014	AM	Pt. Cloudy	R. Logalbo	No Assistant	SPP329	Y	N			
65654	10/30/2014	AM	Pt. Cloudy	R. Logalbo	No Assistant	SPP106	Y	N			
65653	10/30/2014	AM	Pt. Cloudy	R. Logalbo	No Assistant	SPP307	Y	N			
65630	10/29/2014	AM	Pt. Cloudy	R. Logalbo	No Assistant	SPP113	Y	N			
65651	10/29/2014	AM	Pt. Cloudy	R. Logalbo	No Assistant	SPP107	Y	N			
65650	10/29/2014	AM	Pt. Cloudy	R. Logalbo	No Assistant	SPP107A	Y	N			
65649	10/29/2014	AM	Pt. Cloudy	R. Logalbo	No Assistant	SPP227A	Y	N			
65648	10/29/2014	AM	Pt. Cloudy	R. Logalbo	No Assistant	SPP227	Y	N			
65647	10/29/2014	AM	Pt. Cloudy	R. Logalbo	No Assistant	SPP226	Y	N			

[illegible]

65620	10/28/2014	AM	Sunny	R. Logalbo	No Assistant	SPP097A	Y	N			
65619	10/28/2014	AM	Sunny	R. Logalbo	No Assistant	SPP126	Y	N			
65618	10/28/2014	AM	Sunny	R. Logalbo	No Assistant	SPP125A	Y	N			
65617	10/28/2014	AM	Sunny	R. Logalbo	No Assistant	SPP125	Y	N			
65616	10/28/2014	AM	Sunny	R. Logalbo	No Assistant	SPP124	Y	N			
65615	10/28/2014	AM	Sunny	R. Logalbo	No Assistant	SPP115	Y	N			
65614	10/28/2014	AM	Sunny	R. Logalbo	No Assistant	SPP118	Y	N			
65613	10/28/2014	AM	Sunny	R. Logalbo	No Assistant	SPP119	Y	N			
65612	10/28/2014	AM	Sunny	R. Logalbo	No Assistant	SPP120	Y	N			
65611	10/28/2014	AM	Sunny	R. Logalbo	No Assistant	SPP099	Y	N			
65610	10/28/2014	AM	Sunny	R. Logalbo	No Assistant	SPP100	Y	N			
65609	10/28/2014	AM	Sunny	R. Logalbo	No Assistant	SPP101	Y	N			
65608	10/28/2014	AM	Sunny	R. Logalbo	No Assistant	SPP103	Y	N			
65586	10/27/2014	AM	Sunny	R. Logalbo	No Assistant	SPP218	Y	N			
65606	10/27/2014	AM	Sunny	R. Logalbo	No Assistant	SPP249	Y	N			
65605	10/27/2014	AM	Sunny	R. Logalbo	No Assistant	SPP152	Y	N			
65604	10/27/2014	AM	Sunny	R. Logalbo	No Assistant	SPP199C	Y	N			
65603	10/27/2014	AM	Sunny	R. Logalbo	No Assistant	SPP199B	Y	N			
65602	10/27/2014	AM	Sunny	R. Logalbo	No Assistant	SPP199A	Y	N			
65601	10/27/2014	AM	Sunny	R. Logalbo	No Assistant	SPP151	Y	N			
65600	10/27/2014	AM	Sunny	R. Logalbo	No Assistant	SPP248	Y	N			
65599	10/27/2014	AM	Sunny	R. Logalbo	No Assistant	SPP198A	Y	N			
65598	10/27/2014	AM	Sunny	R. Logalbo	No Assistant	SPP150	Y	N			
65597	10/27/2014	AM	Sunny	R. Logalbo	No Assistant	SPP277	Y	N			
65596	10/27/2014	AM	Sunny	R. Logalbo	No Assistant	SPP149	Y	N			
65595	10/27/2014	AM	Sunny	R. Logalbo	No Assistant	SPP148	Y	N			

[illegible]

65568	10/24/2014	AM	Pt. Cloudy	R. Logalbo	No Assistant	SPP074	Y	N			
65567	10/24/2014	AM	Pt. Cloudy	R. Logalbo	No Assistant	SPP073	Y	N			
65566	10/24/2014	AM	Pt. Cloudy	R. Logalbo	No Assistant	SPP072	Y	N			
65565	10/24/2014	AM	Pt. Cloudy	R. Logalbo	No Assistant	SPP070	Y	N			
65564	10/24/2014	AM	Pt. Cloudy	R. Logalbo	No Assistant	SPP069	Y	N			
65514	10/22/2014	AM	Cloudy	R. Logalbo	No Assistant	SPP342B	Y	N			
65562	10/22/2014	AM	Cloudy	R. Logalbo	No Assistant	SPP128	Y	N			
65561	10/22/2014	AM	Cloudy	R. Logalbo	No Assistant	SPP058	Y	N			
65560	10/22/2014	AM	Cloudy	R. Logalbo	No Assistant	SPP056	Y	N			
65559	10/22/2014	AM	Cloudy	R. Logalbo	No Assistant	SPP059	Y	N			
65558	10/22/2014	AM	Cloudy	R. Logalbo	No Assistant	SPP065	Y	N			
65557	10/22/2014	AM	Cloudy	R. Logalbo	No Assistant	SPP067	Y	N			
65556	10/22/2014	AM	Cloudy	R. Logalbo	No Assistant	SPP055	Y	N			
65555	10/22/2014	AM	Cloudy	R. Logalbo	No Assistant	SPP054	Y	N			
65554	10/22/2014	AM	Cloudy	R. Logalbo	No Assistant	SPP053	Y	N			
65553	10/22/2014	AM	Cloudy	R. Logalbo	No Assistant	SPP130	Y	N			
65552	10/22/2014	AM	Cloudy	R. Logalbo	No Assistant	SPP146	Y	N			
65551	10/22/2014	AM	Cloudy	R. Logalbo	No Assistant	SPP052	Y	N			
65550	10/22/2014	AM	Cloudy	R. Logalbo	No Assistant	SPP051	Y	N			
65549	10/22/2014	AM	Cloudy	R. Logalbo	No Assistant	SPP051A	Y	N			
65548	10/22/2014	AM	Cloudy	R. Logalbo	No Assistant	SPP050	Y	N			
65547	10/22/2014	AM	Cloudy	R. Logalbo	No Assistant	SPP048	Y	N			
65546	10/22/2014	AM	Cloudy	R. Logalbo	No Assistant	SPP047	Y	N			
65545	10/22/2014	AM	Cloudy	R. Logalbo	No Assistant	SPP327	Y	N			
65544	10/22/2014	AM	Cloudy	R. Logalbo	No Assistant	SPP045A	Y	N			
65543	10/22/2014	AM	Cloudy	R. Logalbo	No Assistant	SPP042	Y	N			

[illegible]

65516	10/22/2014	AM	Cloudy	R. Logalbo	No Assistant	SPP341A	Y	N			
65515	10/22/2014	AM	Cloudy	R. Logalbo	No Assistant	SPP342A	Y	N			
65496	10/21/2014	AM	Cloudy	R. Logalbo	No Assistant	SPP331	Y	N			
65513	10/21/2014	AM	Cloudy	R. Logalbo	No Assistant	SPP175	Y	N			
65512	10/21/2014	AM	Cloudy	R. Logalbo	No Assistant	SPP176	Y	N			
65511	10/21/2014	AM	Cloudy	R. Logalbo	No Assistant	SPP177	Y	N			
65510	10/21/2014	AM	Cloudy	R. Logalbo	No Assistant	SPP247	Y	N			
65509	10/21/2014	AM	Cloudy	R. Logalbo	No Assistant	SPP335B	Y	N			
65508	10/21/2014	AM	Cloudy	R. Logalbo	No Assistant	SPP335A	Y	N			
65507	10/21/2014	AM	Cloudy	R. Logalbo	No Assistant	SPP334B	Y	N			
65506	10/21/2014	AM	Cloudy	R. Logalbo	No Assistant	SPP334A	Y	N			
65505	10/21/2014	AM	Cloudy	R. Logalbo	No Assistant	SPP229A	Y	N			
65504	10/21/2014	AM	Cloudy	R. Logalbo	No Assistant	SPP229	Y	N			
65503	10/21/2014	AM	Cloudy	R. Logalbo	No Assistant	SPP333	Y	N			
65502	10/21/2014	AM	Cloudy	R. Logalbo	No Assistant	SPP170B	Y	N			
65501	10/21/2014	AM	Cloudy	R. Logalbo	No Assistant	SPP170A	Y	N			
65500	10/21/2014	AM	Cloudy	R. Logalbo	No Assistant	SPP178	Y	N			
65499	10/21/2014	AM	Cloudy	R. Logalbo	No Assistant	SPP179	Y	N			
65498	10/21/2014	AM	Cloudy	R. Logalbo	No Assistant	SPP332	Y	N			
65497	10/21/2014	AM	Cloudy	R. Logalbo	No Assistant	SPP180	Y	N			
65466	10/20/2014	AM	Pt. Cloudy	R. Logalbo	No Assistant	SPP183	Y	N			
65495	10/20/2014	AM	Pt. Cloudy	R. Logalbo	No Assistant	SPP024	Y	N			
65494	10/20/2014	AM	Pt. Cloudy	R. Logalbo	No Assistant	SPP023	Y	N			
65493	10/20/2014	AM	Pt. Cloudy	R. Logalbo	No Assistant	SPP296	Y	N			
65492	10/20/2014	AM	Pt. Cloudy	R. Logalbo	No Assistant	SPP022	Y	N			
65491	10/20/2014	AM	Pt. Cloudy	R. Logalbo	No Assistant	SPP021	Y	N			

[illegible]

65464	10/17/2014	AM	Rain	R. Logalbo	No Assistant	SPP213	Y	N			
65463	10/17/2014	AM	Rain	R. Logalbo	No Assistant	SPP214	Y	N			
65462	10/17/2014	AM	Rain	R. Logalbo	No Assistant	SPP215	Y	N			
65461	10/17/2014	AM	Rain	R. Logalbo	No Assistant	SPP013	Y	N			
65460	10/17/2014	AM	Rain	R. Logalbo	No Assistant	SPP011	Y	N			
65459	10/17/2014	AM	Rain	R. Logalbo	No Assistant	SPP010	Y	N			
65458	10/17/2014	AM	Rain	R. Logalbo	No Assistant	SPP184	Y	N			
65457	10/17/2014	AM	Rain	R. Logalbo	No Assistant	SPP009	Y	N			
65456	10/17/2014	AM	Rain	R. Logalbo	No Assistant	SPP008	Y	N			
65455	10/17/2014	AM	Rain	R. Logalbo	No Assistant	SPP007	Y	N			
65454	10/17/2014	AM	Rain	R. Logalbo	No Assistant	SPP005	Y	N			
65453	10/17/2014	AM	Rain	R. Logalbo	No Assistant	SPP185	Y	N			
65452	10/17/2014	AM	Rain	R. Logalbo	No Assistant	SPP186	Y	N			
65451	10/17/2014	AM	Rain	R. Logalbo	No Assistant	SPP004	Y	N			
65450	10/17/2014	AM	Rain	R. Logalbo	No Assistant	SPP003	Y	N			
65449	10/17/2014	AM	Rain	R. Logalbo	No Assistant	SPP001	Y	N			
65448	10/17/2014	AM	Rain	R. Logalbo	No Assistant	SPP188	Y	N			
65447	10/17/2014	AM	Rain	R. Logalbo	No Assistant	SPP190	Y	N			
65446	10/17/2014	AM	Rain	R. Logalbo	No Assistant	SPP189	Y	N			
65445	10/17/2014	AM	Rain	R. Logalbo	No Assistant	SPP280	Y	N			
65444	10/17/2014	AM	Rain	R. Logalbo	No Assistant	SPP187	Y	N			
65443	10/17/2014	AM	Rain	R. Logalbo	No Assistant	SPP191	Y	N			
65421	10/16/2014	AM	Pt. Cloudy	R. Logalbo	No Assistant	SPP105	Y	N			
65441	10/16/2014	AM	Pt. Cloudy	R. Logalbo	No Assistant	SPP131	Y	N			
65440	10/16/2014	AM	Pt. Cloudy	R. Logalbo	No Assistant	SPP129	Y	N			
65439	10/16/2014	AM	Pt. Cloudy	R. Logalbo	No Assistant	SPP209	Y	N			

65438	10/16/2014	AM	Pt. Cloudy	R. Logalbo	No Assistant	SPP137	Y	N			
65437	10/16/2014	AM	Pt. Cloudy	R. Logalbo	No Assistant	SPP136A	Y	N			
65436	10/16/2014	AM	Pt. Cloudy	R. Logalbo	No Assistant	SPP135A	Y	N			
65435	10/16/2014	AM	Pt. Cloudy	R. Logalbo	No Assistant	SPP132	Y	N			
65434	10/16/2014	AM	Pt. Cloudy	R. Logalbo	No Assistant	SPP279	Y	N			
65433	10/16/2014	AM	Pt. Cloudy	R. Logalbo	No Assistant	SPP283	Y	N			
65432	10/16/2014	AM	Pt. Cloudy	R. Logalbo	No Assistant	SPP322	Y	N			
65431	10/16/2014	AM	Pt. Cloudy	R. Logalbo	No Assistant	SPP212	Y	N			
65430	10/16/2014	AM	Pt. Cloudy	R. Logalbo	No Assistant	SPP211	Y	N			
65429	10/16/2014	AM	Pt. Cloudy	R. Logalbo	No Assistant	SPP291	Y	N			
65428	10/16/2014	AM	Pt. Cloudy	R. Logalbo	No Assistant	SPP292	Y	N			
65427	10/16/2014	AM	Pt. Cloudy	R. Logalbo	No Assistant	SPP293	Y	N			
65426	10/16/2014	AM	Pt. Cloudy	R. Logalbo	No Assistant	SPP294	Y	N			
65425	10/16/2014	AM	Pt. Cloudy	R. Logalbo	No Assistant	SPP295	Y	N			
65424	10/16/2014	AM	Pt. Cloudy	R. Logalbo	No Assistant	SPP329	Y	N			
65423	10/16/2014	AM	Pt. Cloudy	R. Logalbo	No Assistant	SPP106	Y	N			
65422	10/16/2014	AM	Pt. Cloudy	R. Logalbo	No Assistant	SPP307	Y	N			
65399	10/15/2014	AM	Cloudy	R. Logalbo	No Assistant	SPP113	Y	N			
65420	10/15/2014	AM	Cloudy	R. Logalbo	No Assistant	SPP107	Y	N			
65419	10/15/2014	AM	Cloudy	R. Logalbo	No Assistant	SPP107A	Y	N			
65418	10/15/2014	AM	Cloudy	R. Logalbo	No Assistant	SPP311	Y	N			
65417	10/15/2014	AM	Cloudy	R. Logalbo	No Assistant	SPP122	Y	N			
65416	10/15/2014	AM	Cloudy	R. Logalbo	No Assistant	SPP227A	Y	N			
65415	10/15/2014	AM	Cloudy	R. Logalbo	No Assistant	SPP227	Y	N			
65414	10/15/2014	AM	Cloudy	R. Logalbo	No Assistant	SPP226	Y	N			
65413	10/15/2014	AM	Cloudy	R. Logalbo	No Assistant	SPP225	Y	N			

[illegible]

65386	10/14/2014	AM	Sunny	R. Logalbo	No Assistant	SPP125	Y	N			
65385	10/14/2014	AM	Sunny	R. Logalbo	No Assistant	SPP115	Y	N			
65384	10/14/2014	AM	Sunny	R. Logalbo	No Assistant	SPP118	Y	N			
65383	10/14/2014	AM	Sunny	R. Logalbo	No Assistant	SPP119	Y	N			
65382	10/14/2014	AM	Sunny	R. Logalbo	No Assistant	SPP120	Y	N			
65381	10/14/2014	AM	Sunny	R. Logalbo	No Assistant	SPP099	Y	N			
65380	10/14/2014	AM	Sunny	R. Logalbo	No Assistant	SPP100	Y	N			
65379	10/14/2014	AM	Sunny	R. Logalbo	No Assistant	SPP101	Y	N			
65378	10/14/2014	AM	Sunny	R. Logalbo	No Assistant	SPP103	Y	N			
65356	10/10/2014	AM	Sunny	R. Logalbo	No Assistant	SPP218	Y	N			
65376	10/10/2014	AM	Sunny	R. Logalbo	No Assistant	SPP249	Y	N			
65375	10/10/2014	AM	Sunny	R. Logalbo	No Assistant	SPP152	Y	N			
65374	10/10/2014	AM	Sunny	R. Logalbo	No Assistant	SPP199C	Y	N			
65373	10/10/2014	AM	Sunny	R. Logalbo	No Assistant	SPP199B	Y	N			
65372	10/10/2014	AM	Sunny	R. Logalbo	No Assistant	SPP199A	Y	N			
65371	10/10/2014	AM	Sunny	R. Logalbo	No Assistant	SPP151	Y	N			
65370	10/10/2014	AM	Sunny	R. Logalbo	No Assistant	SPP248	Y	N			
65369	10/10/2014	AM	Sunny	R. Logalbo	No Assistant	SPP198A	Y	N			
65368	10/10/2014	AM	Sunny	R. Logalbo	No Assistant	SPP150	Y	N			
65367	10/10/2014	AM	Sunny	R. Logalbo	No Assistant	SPP277	Y	N			
65366	10/10/2014	AM	Sunny	R. Logalbo	No Assistant	SPP149	Y	N			
65365	10/10/2014	AM	Sunny	R. Logalbo	No Assistant	SPP148	Y	N			
65364	10/10/2014	AM	Sunny	R. Logalbo	No Assistant	SPP320	Y	N			
65363	10/10/2014	AM	Sunny	R. Logalbo	No Assistant	SPP319	Y	N			
65362	10/10/2014	AM	Sunny	R. Logalbo	No Assistant	SPP318	Y	N			
65361	10/10/2014	AM	Sunny	R. Logalbo	No Assistant	SPP317	Y	N			

[illegible]

65334	10/9/2014	AM	Pt. Cloudy	R. Logalbo	No Assistant	SPP069	Y	N			
65308	10/8/2014	AM	Rain	R. Logalbo	No Assistant	SPP304	Y	N			
65332	10/8/2014	AM	Rain	R. Logalbo	No Assistant	SPP067	Y	N			
65331	10/8/2014	AM	Rain	R. Logalbo	No Assistant	SPP055	Y	N			
65330	10/8/2014	AM	Rain	R. Logalbo	No Assistant	SPP058	Y	N			
65329	10/8/2014	AM	Rain	R. Logalbo	No Assistant	SPP065	Y	N			
65328	10/8/2014	AM	Rain	R. Logalbo	No Assistant	SPP059	Y	N			
65327	10/8/2014	AM	Rain	R. Logalbo	No Assistant	SPP056	Y	N			
65326	10/8/2014	AM	Rain	R. Logalbo	No Assistant	SPP054	Y	N			
65325	10/8/2014	AM	Rain	R. Logalbo	No Assistant	SPP053	Y	N			
65324	10/8/2014	AM	Rain	R. Logalbo	No Assistant	SPP128	Y	N			
65323	10/8/2014	AM	Rain	R. Logalbo	No Assistant	SPP130	Y	N			
65322	10/8/2014	AM	Rain	R. Logalbo	No Assistant	SPP146	Y	N			
65321	10/8/2014	AM	Rain	R. Logalbo	No Assistant	SPP052	Y	N			
65320	10/8/2014	AM	Rain	R. Logalbo	No Assistant	SPP051	Y	N			
65319	10/8/2014	AM	Rain	R. Logalbo	No Assistant	SPP051A	Y	N			
65318	10/8/2014	AM	Rain	R. Logalbo	No Assistant	SPP050	Y	N			
65317	10/8/2014	AM	Rain	R. Logalbo	No Assistant	SPP327	Y	N			
65316	10/8/2014	AM	Rain	R. Logalbo	No Assistant	SPP048	Y	N			
65315	10/8/2014	AM	Rain	R. Logalbo	No Assistant	SPP047	Y	N			
65314	10/8/2014	AM	Rain	R. Logalbo	No Assistant	SPP045A	Y	N			
65313	10/8/2014	AM	Rain	R. Logalbo	No Assistant	SPP042	Y	N			
65312	10/8/2014	AM	Rain	R. Logalbo	No Assistant	SPP036	Y	N			
65311	10/8/2014	AM	Rain	R. Logalbo	No Assistant	SPP035	Y	N			
65310	10/8/2014	AM	Rain	R. Logalbo	No Assistant	SPP206B	Y	N			
65309	10/8/2014	AM	Rain	R. Logalbo	No Assistant	SPP206A	Y	N			

[illegible]

65282	10/6/2014	AM	Cloudy	R. Logalbo	No Assistant	SPP176	Y	N			
65281	10/6/2014	AM	Cloudy	R. Logalbo	No Assistant	SPP177	Y	N			
65280	10/6/2014	AM	Cloudy	R. Logalbo	No Assistant	SPP247	Y	N			
65279	10/6/2014	AM	Cloudy	R. Logalbo	No Assistant	SPP166	Y	N			
65278	10/6/2014	AM	Cloudy	R. Logalbo	No Assistant	SPP335A	Y	N			
65277	10/6/2014	AM	Cloudy	R. Logalbo	No Assistant	SPP335B	Y	N			
65276	10/6/2014	AM	Cloudy	R. Logalbo	No Assistant	SPP334B	Y	N			
65275	10/6/2014	AM	Cloudy	R. Logalbo	No Assistant	SPP334A	Y	N			
65274	10/6/2014	AM	Cloudy	R. Logalbo	No Assistant	SPP229	Y	N			
65273	10/6/2014	AM	Cloudy	R. Logalbo	No Assistant	SPP229A	Y	N			
65272	10/6/2014	AM	Cloudy	R. Logalbo	No Assistant	SPP333	Y	N			
65271	10/6/2014	AM	Cloudy	R. Logalbo	No Assistant	SPP170B	Y	N			
65270	10/6/2014	AM	Cloudy	R. Logalbo	No Assistant	SPP345	Y	N			
65269	10/6/2014	AM	Cloudy	R. Logalbo	No Assistant	SPP170A	Y	N			
65268	10/6/2014	AM	Cloudy	R. Logalbo	No Assistant	SPP178	Y	N			
65267	10/6/2014	AM	Cloudy	R. Logalbo	No Assistant	SPP179	Y	N			
65266	10/6/2014	AM	Cloudy	R. Logalbo	No Assistant	SPP332	Y	N			
65265	10/6/2014	AM	Cloudy	R. Logalbo	No Assistant	SPP180	Y	N			
65235	10/3/2014	AM	Sunny	R. Logalbo	No Assistant	SPP014A	Y	N			
65263	10/3/2014	AM	Sunny	R. Logalbo	No Assistant	SPP244	Y	N			
65262	10/3/2014	AM	Sunny	R. Logalbo	No Assistant	SPP245	Y	N			
65261	10/3/2014	AM	Sunny	R. Logalbo	No Assistant	SPP238	Y	N			
65260	10/3/2014	AM	Sunny	R. Logalbo	No Assistant	SPP236	Y	N			
65259	10/3/2014	AM	Sunny	R. Logalbo	No Assistant	SPP235	Y	N			
65258	10/3/2014	AM	Sunny	R. Logalbo	No Assistant	SPP239	Y	N			
65257	10/3/2014	AM	Sunny	R. Logalbo	No Assistant	SPP240	Y	N			

[illegible]

65230	10/2/2014	AM	Sunny	R. Logalbo	No Assistant	SPP011	Y	N			
65229	10/2/2014	AM	Sunny	R. Logalbo	No Assistant	SPP215	Y	N			
65228	10/2/2014	AM	Sunny	R. Logalbo	No Assistant	SPP010	Y	N			
65227	10/2/2014	AM	Sunny	R. Logalbo	No Assistant	SPP009	Y	N			
65226	10/2/2014	AM	Sunny	R. Logalbo	No Assistant	SPP008	Y	N			
65225	10/2/2014	AM	Sunny	R. Logalbo	No Assistant	SPP184	Y	N			
65224	10/2/2014	AM	Sunny	R. Logalbo	No Assistant	SPP007	Y	N			
65223	10/2/2014	AM	Sunny	R. Logalbo	No Assistant	SPP005	Y	N			
65222	10/2/2014	AM	Sunny	R. Logalbo	No Assistant	SPP185	Y	N			
65221	10/2/2014	AM	Sunny	R. Logalbo	No Assistant	SPP186	Y	N			
65220	10/2/2014	AM	Sunny	R. Logalbo	No Assistant	SPP004	Y	N			
65219	10/2/2014	AM	Sunny	R. Logalbo	No Assistant	SPP003	Y	N			
65218	10/2/2014	AM	Sunny	R. Logalbo	No Assistant	SPP001	Y	N			
65217	10/2/2014	AM	Sunny	R. Logalbo	No Assistant	SPP188	Y	N			
65216	10/2/2014	AM	Sunny	R. Logalbo	No Assistant	SPP190	Y	N			
65215	10/2/2014	AM	Sunny	R. Logalbo	No Assistant	SPP189	Y	N			
65214	10/2/2014	AM	Sunny	R. Logalbo	No Assistant	SPP280	Y	N			
65213	10/2/2014	AM	Sunny	R. Logalbo	No Assistant	SPP187	Y	N			
65212	10/2/2014	AM	Sunny	R. Logalbo	No Assistant	SPP191	Y	N			
65189	10/1/2014	AM	Pt. Cloudy	R. Logalbo	No Assistant	SPP105	Y	N			
65210	10/1/2014	AM	Pt. Cloudy	R. Logalbo	No Assistant	SPP283	Y	N			
65209	10/1/2014	AM	Pt. Cloudy	R. Logalbo	No Assistant	SPP131	Y	N			
65208	10/1/2014	AM	Pt. Cloudy	R. Logalbo	No Assistant	SPP129	Y	N			
65207	10/1/2014	AM	Pt. Cloudy	R. Logalbo	No Assistant	SPP279	Y	N			
65206	10/1/2014	AM	Pt. Cloudy	R. Logalbo	No Assistant	SPP133	Y	N			
65205	10/1/2014	AM	Pt. Cloudy	R. Logalbo	No Assistant	SPP132	Y	N			

65204	10/1/2014	AM	Pt. Cloudy	R. Logalbo	No Assistant	SPP135A	Y	N			
65203	10/1/2014	AM	Pt. Cloudy	R. Logalbo	No Assistant	SPP136A	Y	N			
65202	10/1/2014	AM	Pt. Cloudy	R. Logalbo	No Assistant	SPP137	Y	N			
65201	10/1/2014	AM	Pt. Cloudy	R. Logalbo	No Assistant	SPP209	Y	N			
65200	10/1/2014	AM	Pt. Cloudy	R. Logalbo	No Assistant	SPP322	Y	N			
65199	10/1/2014	AM	Pt. Cloudy	R. Logalbo	No Assistant	SPP212	Y	N	cleaned concrete from invert		
65198	10/1/2014	AM	Pt. Cloudy	R. Logalbo	No Assistant	SPP211	Y	N			
65197	10/1/2014	AM	Pt. Cloudy	R. Logalbo	No Assistant	SPP291	Y	N			
65196	10/1/2014	AM	Pt. Cloudy	R. Logalbo	No Assistant	SPP292	Y	N			
65195	10/1/2014	AM	Pt. Cloudy	R. Logalbo	No Assistant	SPP293	Y	N			
65194	10/1/2014	AM	Pt. Cloudy	R. Logalbo	No Assistant	SPP294	Y	N			
65193	10/1/2014	AM	Pt. Cloudy	R. Logalbo	No Assistant	SPP295	Y	N			
65192	10/1/2014	AM	Pt. Cloudy	R. Logalbo	No Assistant	SPP329	Y	N			
65191	10/1/2014	AM	Pt. Cloudy	R. Logalbo	No Assistant	SPP106	Y	N			
65190	10/1/2014	AM	Pt. Cloudy	R. Logalbo	No Assistant	SPP307	Y	N			
65169	9/30/2014	AM	Cloudy	R. Logalbo	No Assistant	SPP114	Y	N			
65188	9/30/2014	AM	Cloudy	R. Logalbo	No Assistant	SPP107A	Y	N			
65187	9/30/2014	AM	Cloudy	R. Logalbo	No Assistant	SPP107	Y	N			
65186	9/30/2014	AM	Cloudy	R. Logalbo	No Assistant	SPP223	Y	N			
65185	9/30/2014	AM	Cloudy	R. Logalbo	No Assistant	SPP226	Y	N			
65184	9/30/2014	AM	Cloudy	R. Logalbo	No Assistant	SPP227	Y	N			
65183	9/30/2014	AM	Cloudy	R. Logalbo	No Assistant	SPP225	Y	N			
65182	9/30/2014	AM	Cloudy	R. Logalbo	No Assistant	SPP227A	Y	N			
65181	9/30/2014	AM	Cloudy	R. Logalbo	No Assistant	SPP311	Y	N			
65180	9/30/2014	AM	Cloudy	R. Logalbo	No Assistant	SPP220	Y	N			
65179	9/30/2014	AM	Cloudy	R.	No	SPP221	Y	N			

				Logalbo	Assistant							
65178	9/30/2014	AM	Cloudy	R. Logalbo	No Assistant	SPP222	Y	N				
65177	9/30/2014	AM	Cloudy	R. Logalbo	No Assistant	SPP109	Y	N				
65176	9/30/2014	AM	Cloudy	R. Logalbo	No Assistant	SPP121	Y	N				
65175	9/30/2014	AM	Cloudy	R. Logalbo	No Assistant	SPP310	Y	N				
65174	9/30/2014	AM	Cloudy	R. Logalbo	No Assistant	SPP309	Y	N				
65173	9/30/2014	AM	Cloudy	R. Logalbo	No Assistant	SPP308B	Y	N				
65172	9/30/2014	AM	Cloudy	R. Logalbo	No Assistant	SPP308A	Y	N				
65171	9/30/2014	AM	Cloudy	R. Logalbo	No Assistant	SPP308	Y	N				
65170	9/30/2014	AM	Cloudy	R. Logalbo	No Assistant	SPP113	Y	N				
65145	9/25/2014	AM	Sunny	R. Logalbo	No Assistant	SPP104	Y	N				
65168	9/25/2014	AM	Sunny	R. Logalbo	No Assistant	SPP138	Y	N				
65167	9/25/2014	AM	Sunny	R. Logalbo	No Assistant	SPP145	Y	N				
65166	9/25/2014	AM	Sunny	R. Logalbo	No Assistant	SPP281	Y	N				
65165	9/25/2014	AM	Sunny	R. Logalbo	No Assistant	SPP282	Y	N				
65164	9/25/2014	AM	Sunny	R. Logalbo	No Assistant	SPP326	Y	N				
65163	9/25/2014	AM	Sunny	R. Logalbo	No Assistant	SPP097	Y	N				
65162	9/25/2014	AM	Sunny	R. Logalbo	No Assistant	SPP097A	Y	N				
65161	9/25/2014	AM	Sunny	R. Logalbo	No Assistant	SPP123C	Y	N				
65160	9/25/2014	AM	Sunny	R. Logalbo	No Assistant	SPP123B	Y	N				
65159	9/25/2014	AM	Sunny	R. Logalbo	No Assistant	SPP123A	Y	N				
65158	9/25/2014	AM	Sunny	R. Logalbo	No Assistant	SPP208	Y	N				
65157	9/25/2014	AM	Sunny	R. Logalbo	No Assistant	SPP124	Y	N				
65156	9/25/2014	AM	Sunny	R. Logalbo	No Assistant	SPP125	Y	N				
65155	9/25/2014	AM	Sunny	R. Logalbo	No Assistant	SPP125A	Y	N				
65154	9/25/2014	AM	Sunny	R. Logalbo	No Assistant	SPP126	Y	N				
65153	9/25/2014	AM	Sunny	R.	No	SPP115	Y	N				

				Logalbo	Assistant							
65152	9/25/2014	AM	Sunny	R. Logalbo	No Assistant	SPP118	Y	N				
65151	9/25/2014	AM	Sunny	R. Logalbo	No Assistant	SPP119	Y	N				
65150	9/25/2014	AM	Sunny	R. Logalbo	No Assistant	SPP120	Y	N				
65149	9/25/2014	AM	Sunny	R. Logalbo	No Assistant	SPP099	Y	N				
65148	9/25/2014	AM	Sunny	R. Logalbo	No Assistant	SPP100	Y	N				
65147	9/25/2014	AM	Sunny	R. Logalbo	No Assistant	SPP101	Y	N				
65146	9/25/2014	AM	Sunny	R. Logalbo	No Assistant	SPP103	Y	N				
65125	9/24/2014	AM	Sunny	R. Logalbo	No Assistant	SPP217	Y	N				
65144	9/24/2014	AM	Sunny	R. Logalbo	No Assistant	SPP249	Y	N				
65143	9/24/2014	AM	Sunny	R. Logalbo	No Assistant	SPP152	Y	N				
65142	9/24/2014	AM	Sunny	R. Logalbo	No Assistant	SPP199B	Y	N				
65141	9/24/2014	AM	Sunny	R. Logalbo	No Assistant	SPP199A	Y	N				
65140	9/24/2014	AM	Sunny	R. Logalbo	No Assistant	SPP199C	Y	N				
65139	9/24/2014	AM	Sunny	R. Logalbo	No Assistant	SPP151	Y	N				
65138	9/24/2014	AM	Sunny	R. Logalbo	No Assistant	SPP248	Y	N				
65137	9/24/2014	AM	Sunny	R. Logalbo	No Assistant	SPP150	Y	N				
65136	9/24/2014	AM	Sunny	R. Logalbo	No Assistant	SPP277	Y	N				
65135	9/24/2014	AM	Sunny	R. Logalbo	No Assistant	SPP149	Y	N				
65134	9/24/2014	AM	Sunny	R. Logalbo	No Assistant	SPP148	Y	N				
65133	9/24/2014	AM	Sunny	R. Logalbo	No Assistant	SPP320	Y	N				
65132	9/24/2014	AM	Sunny	R. Logalbo	No Assistant	SPP319	Y	N				
65131	9/24/2014	AM	Sunny	R. Logalbo	No Assistant	SPP318	Y	N				
65130	9/24/2014	AM	Sunny	R. Logalbo	No Assistant	SPP317	Y	N				
65129	9/24/2014	AM	Sunny	R. Logalbo	No Assistant	SPP218	Y	N				
65128	9/24/2014	AM	Sunny	R. Logalbo	No Assistant	SPP316	Y	N				
				R.	No							

65127	9/24/2014	AM	Sunny	Logalbo	Assistant	SPP315	Y	N			
65126	9/24/2014	AM	Sunny	R. Logalbo	No Assistant	SPP314	Y	N			
65102	9/23/2014	AM	Sunny	R. Logalbo	No Assistant	SPP069	Y	N			
65124	9/23/2014	AM	Sunny	R. Logalbo	No Assistant	SPP094	Y	N			
65123	9/23/2014	AM	Sunny	R. Logalbo	No Assistant	SPP087	Y	N			
65122	9/23/2014	AM	Sunny	R. Logalbo	No Assistant	SPP088	Y	N			
65121	9/23/2014	AM	Sunny	R. Logalbo	No Assistant	SPP092	Y	N			
65120	9/23/2014	AM	Sunny	R. Logalbo	No Assistant	SPP091	Y	N			
65119	9/23/2014	AM	Sunny	R. Logalbo	No Assistant	SPP090	Y	N			
65118	9/23/2014	AM	Sunny	R. Logalbo	No Assistant	SPP089	Y	N			
65117	9/23/2014	AM	Sunny	R. Logalbo	No Assistant	SPP084	Y	N			
65116	9/23/2014	AM	Sunny	R. Logalbo	No Assistant	SPP086	Y	N			
65115	9/23/2014	AM	Sunny	R. Logalbo	No Assistant	SPP085	Y	N			
65114	9/23/2014	AM	Sunny	R. Logalbo	No Assistant	SPP082	Y	N			
65113	9/23/2014	AM	Sunny	R. Logalbo	No Assistant	SPP081	Y	N			
65112	9/23/2014	AM	Sunny	R. Logalbo	No Assistant	SPP078	Y	N			
65111	9/23/2014	AM	Sunny	R. Logalbo	No Assistant	SPP079	Y	N			
65110	9/23/2014	AM	Sunny	R. Logalbo	No Assistant	SPP080	Y	N			
65109	9/23/2014	AM	Sunny	R. Logalbo	No Assistant	SPP077	Y	N			
65108	9/23/2014	AM	Sunny	R. Logalbo	No Assistant	SPP073	Y	N			
65107	9/23/2014	AM	Sunny	R. Logalbo	No Assistant	SPP075	Y	N			
65106	9/23/2014	AM	Sunny	R. Logalbo	No Assistant	SPP074	Y	N			
65105	9/23/2014	AM	Sunny	R. Logalbo	No Assistant	SPP072	Y	N			
65104	9/23/2014	AM	Sunny	R. Logalbo	No Assistant	SPP070	Y	N			
65103	9/23/2014	AM	Sunny	R. Logalbo	No Assistant	SPP068	Y	N			
65078	9/22/2014	AM	Cloudy	R. Logalbo	No Assistant	SPP304	Y	N			
				R.	No						

[illegible]

[illegible]

65049	9/17/2014	AM	Sunny	R. Logalbo	No Assistant	SPP334A	Y	N			
65048	9/17/2014	AM	Sunny	R. Logalbo	No Assistant	SPP178	Y	N			
65047	9/17/2014	AM	Sunny	R. Logalbo	No Assistant	SPP175	Y	N			
65046	9/17/2014	AM	Sunny	R. Logalbo	No Assistant	SPP176	Y	N			
65045	9/17/2014	AM	Sunny	R. Logalbo	No Assistant	SPP177	Y	N			
65044	9/17/2014	AM	Sunny	R. Logalbo	No Assistant	SPP229A	Y	N			
65043	9/17/2014	AM	Sunny	R. Logalbo	No Assistant	SPP229	Y	N			
65042	9/17/2014	AM	Sunny	R. Logalbo	No Assistant	SPP345	Y	N			
65041	9/17/2014	AM	Sunny	R. Logalbo	No Assistant	SPP333	Y	N			
65040	9/17/2014	AM	Sunny	R. Logalbo	No Assistant	SPP170B	Y	N			
65039	9/17/2014	AM	Sunny	R. Logalbo	No Assistant	SPP179	Y	N			
65038	9/17/2014	AM	Sunny	R. Logalbo	No Assistant	SPP244	Y	N			
65037	9/17/2014	AM	Sunny	R. Logalbo	No Assistant	SPP245	Y	N			
65036	9/17/2014	AM	Sunny	R. Logalbo	No Assistant	SPP332	Y	N			
65035	9/17/2014	AM	Sunny	R. Logalbo	No Assistant	SPP180	Y	N			
65034	9/17/2014	AM	Sunny	R. Logalbo	No Assistant	SPP331	Y	N			
65033	9/17/2014	AM	Sunny	R. Logalbo	No Assistant	SPP024	Y	N			
65032	9/17/2014	AM	Sunny	R. Logalbo	No Assistant	SPP023	Y	N			
65031	9/17/2014	AM	Sunny	R. Logalbo	No Assistant	SPP296	Y	N			
65030	9/17/2014	AM	Sunny	R. Logalbo	No Assistant	SPP022	Y	N			
65029	9/17/2014	AM	Sunny	R. Logalbo	No Assistant	SPP021	Y	N			
65028	9/17/2014	AM	Sunny	R. Logalbo	No Assistant	SPP020	Y	N			
65027	9/17/2014	AM	Sunny	R. Logalbo	No Assistant	SPP019	Y	N			
65026	9/17/2014	AM	Sunny	R. Logalbo	No Assistant	SPP018	Y	N			
65025	9/17/2014	AM	Sunny	R. Logalbo	No Assistant	SPP017	Y	N			
65024	9/17/2014	AM	Sunny	R. Logalbo	No Assistant	SPP015	Y	N			

[illegible]

[illegible]

64971	9/11/2014	AM	Cloudy	R. Logalbo	No Assistant	SPP322	Y	N			
64970	9/11/2014	AM	Cloudy	R. Logalbo	No Assistant	SPP212	Y	N			
64969	9/11/2014	AM	Cloudy	R. Logalbo	No Assistant	SPP211	Y	N			
64968	9/11/2014	AM	Cloudy	R. Logalbo	No Assistant	SPP291	Y	N			
64967	9/11/2014	AM	Cloudy	R. Logalbo	No Assistant	SPP292	Y	N			
64966	9/11/2014	AM	Cloudy	R. Logalbo	No Assistant	SPP293	Y	N			
64965	9/11/2014	AM	Cloudy	R. Logalbo	No Assistant	SPP294	Y	N			
64964	9/11/2014	AM	Cloudy	R. Logalbo	No Assistant	SPP295	Y	N			
64963	9/11/2014	AM	Cloudy	R. Logalbo	No Assistant	SPP329	Y	N			
64962	9/11/2014	AM	Cloudy	R. Logalbo	No Assistant	SPP105	Y	N			
64961	9/11/2014	AM	Cloudy	R. Logalbo	No Assistant	SPP106	Y	N			
64939	9/10/2014	AM	Pt. Cloudy	R. Logalbo	No Assistant	SPP113	Y	N			
64959	9/10/2014	AM	Pt. Cloudy	R. Logalbo	No Assistant	SPP107	Y	N			
64958	9/10/2014	AM	Pt. Cloudy	R. Logalbo	No Assistant	SPP107A	Y	N			
64957	9/10/2014	AM	Pt. Cloudy	R. Logalbo	No Assistant	SPP122	Y	N			
64956	9/10/2014	AM	Pt. Cloudy	R. Logalbo	No Assistant	SPP311	Y	N			
64955	9/10/2014	AM	Pt. Cloudy	R. Logalbo	No Assistant	SPP226	Y	N			
64954	9/10/2014	AM	Pt. Cloudy	R. Logalbo	No Assistant	SPP227	Y	N			
64953	9/10/2014	AM	Pt. Cloudy	R. Logalbo	No Assistant	SPP227A	Y	N			
64952	9/10/2014	AM	Pt. Cloudy	R. Logalbo	No Assistant	SPP224	Y	N			
64951	9/10/2014	AM	Pt. Cloudy	R. Logalbo	No Assistant	SPP223	Y	N			
64950	9/10/2014	AM	Pt. Cloudy	R. Logalbo	No Assistant	SPP220	Y	N			
64949	9/10/2014	AM	Pt. Cloudy	R. Logalbo	No Assistant	SPP221	Y	N			
64948	9/10/2014	AM	Pt. Cloudy	R. Logalbo	No Assistant	SPP222	Y	N			
64947	9/10/2014	AM	Pt. Cloudy	R. Logalbo	No Assistant	SPP109	Y	N			
64946	9/10/2014	AM	Pt. Cloudy	R. Logalbo	No Assistant	SPP121	Y	N			

[illegible]

64919	9/9/2014	AM	Sunny	R. Logalbo	No Assistant	SPP099	Y	N			
64918	9/9/2014	AM	Sunny	R. Logalbo	No Assistant	SPP100	Y	N			
64917	9/9/2014	AM	Sunny	R. Logalbo	No Assistant	SPP101	Y	N			
64916	9/9/2014	AM	Sunny	R. Logalbo	No Assistant	SPP103	Y	N			
64895	9/5/2014	AM	Sunny	R. Logalbo	No Assistant	SPP217	Y	N			
64914	9/5/2014	AM	Sunny	R. Logalbo	No Assistant	SPP249	Y	N			
64913	9/5/2014	AM	Sunny	R. Logalbo	No Assistant	SPP152	Y	N			
64912	9/5/2014	AM	Sunny	R. Logalbo	No Assistant	SPP199C	Y	N			
64911	9/5/2014	AM	Sunny	R. Logalbo	No Assistant	SPP199B	Y	N			
64910	9/5/2014	AM	Sunny	R. Logalbo	No Assistant	SPP199A	Y	N			
64909	9/5/2014	AM	Sunny	R. Logalbo	No Assistant	SPP151	Y	N			
64908	9/5/2014	AM	Sunny	R. Logalbo	No Assistant	SPP248	Y	N			
64907	9/5/2014	AM	Sunny	R. Logalbo	No Assistant	SPP198A	Y	N			
64906	9/5/2014	AM	Sunny	R. Logalbo	No Assistant	SPP150	Y	N			
64905	9/5/2014	AM	Sunny	R. Logalbo	No Assistant	SPP277	Y	N			
64904	9/5/2014	AM	Sunny	R. Logalbo	No Assistant	SPP149	Y	N			
64903	9/5/2014	AM	Sunny	R. Logalbo	No Assistant	SPP148	Y	N			
64902	9/5/2014	AM	Sunny	R. Logalbo	No Assistant	SPP320	Y	N			
64901	9/5/2014	AM	Sunny	R. Logalbo	No Assistant	SPP319	Y	N			
64900	9/5/2014	AM	Sunny	R. Logalbo	No Assistant	SPP318	Y	N			
64899	9/5/2014	AM	Sunny	R. Logalbo	No Assistant	SPP317	Y	N			
64898	9/5/2014	AM	Sunny	R. Logalbo	No Assistant	SPP316	Y	N			
64897	9/5/2014	AM	Sunny	R. Logalbo	No Assistant	SPP315	Y	N			
64896	9/5/2014	AM	Sunny	R. Logalbo	No Assistant	SPP314	Y	N			
64871	9/4/2014	AM	Sunny	R. Logalbo	No Assistant	SPP069	Y	N			
64894	9/4/2014	AM	Sunny	R. Logalbo	No Assistant	SPP218	Y	N			

[illegible]

64867	9/3/2014	AM	Sunny	R. Logalbo	No Assistant	SPP055	Y	N			
64866	9/3/2014	AM	Sunny	R. Logalbo	No Assistant	SPP058	Y	N			
64865	9/3/2014	AM	Sunny	R. Logalbo	No Assistant	SPP056	Y	N			
64864	9/3/2014	AM	Sunny	R. Logalbo	No Assistant	SPP054	Y	N			
64863	9/3/2014	AM	Sunny	R. Logalbo	No Assistant	SPP128	Y	N			
64862	9/3/2014	AM	Sunny	R. Logalbo	No Assistant	SPP130	Y	N			
64861	9/3/2014	AM	Sunny	R. Logalbo	No Assistant	SPP146	Y	N			
64860	9/3/2014	AM	Sunny	R. Logalbo	No Assistant	SPP053	Y	N			
64859	9/3/2014	AM	Sunny	R. Logalbo	No Assistant	SPP052	Y	N			
64858	9/3/2014	AM	Sunny	R. Logalbo	No Assistant	SPP051	Y	N			
64857	9/3/2014	AM	Sunny	R. Logalbo	No Assistant	SPP051A	Y	N			
64856	9/3/2014	AM	Sunny	R. Logalbo	No Assistant	SPP050	Y	N			
64855	9/3/2014	AM	Sunny	R. Logalbo	No Assistant	SPP327	Y	N			
64854	9/3/2014	AM	Sunny	R. Logalbo	No Assistant	SPP048	Y	N			
64853	9/3/2014	AM	Sunny	R. Logalbo	No Assistant	SPP047	Y	N			
64852	9/3/2014	AM	Sunny	R. Logalbo	No Assistant	SPP045A	Y	N			
64851	9/3/2014	AM	Sunny	R. Logalbo	No Assistant	SPP042	Y	N			
64850	9/3/2014	AM	Sunny	R. Logalbo	No Assistant	SPP206A	Y	N			
64849	9/3/2014	AM	Sunny	R. Logalbo	No Assistant	SPP206B	Y	N			
64824	9/2/2014	AM	Cloudy	R. Logalbo	No Assistant	SPP342B	Y	N			
64847	9/2/2014	AM	Cloudy	R. Logalbo	No Assistant	SPP165A	Y	N			
64846	9/2/2014	AM	Cloudy	R. Logalbo	No Assistant	SPP165B	Y	N			
64845	9/2/2014	AM	Cloudy	R. Logalbo	No Assistant	SPP336A	Y	N			
64844	9/2/2014	AM	Cloudy	R. Logalbo	No Assistant	SPP336B	Y	N			
64843	9/2/2014	AM	Cloudy	R. Logalbo	No Assistant	SPP165	Y	N			
64842	9/2/2014	AM	Cloudy	R. Logalbo	No Assistant	SPP164	Y	N			

[illegible]

64815	8/29/2014	AM	Pt. Sunny	R. Logalbo	No Assistant	SPP334B	Y	N			
64814	8/29/2014	AM	Pt. Sunny	R. Logalbo	No Assistant	SPP334A	Y	N			
64813	8/29/2014	AM	Pt. Sunny	R. Logalbo	No Assistant	SPP229A	Y	N			
64812	8/29/2014	AM	Pt. Sunny	R. Logalbo	No Assistant	SPP229	Y	N			
64811	8/29/2014	AM	Pt. Sunny	R. Logalbo	No Assistant	SPP333	Y	N			
64810	8/29/2014	AM	Pt. Sunny	R. Logalbo	No Assistant	SPP170B	Y	N			
64809	8/29/2014	AM	Pt. Sunny	R. Logalbo	No Assistant	SPP170A	Y	N			
64808	8/29/2014	AM	Pt. Sunny	R. Logalbo	No Assistant	SPP345	Y	N			
64807	8/29/2014	AM	Pt. Sunny	R. Logalbo	No Assistant	SPP179	Y	N			
64806	8/29/2014	AM	Pt. Sunny	R. Logalbo	No Assistant	SPP332	Y	N			
64805	8/29/2014	AM	Pt. Sunny	R. Logalbo	No Assistant	SPP180	Y	N			
64777	8/28/2014	AM	Sunny	R. Logalbo	No Assistant	SPP183	Y	N			
64803	8/28/2014	AM	Sunny	R. Logalbo	No Assistant	SPP024	Y	N			
64802	8/28/2014	AM	Sunny	R. Logalbo	No Assistant	SPP023	Y	N			
64801	8/28/2014	AM	Sunny	R. Logalbo	No Assistant	SPP296	Y	N			
64800	8/28/2014	AM	Sunny	R. Logalbo	No Assistant	SPP022	Y	N			
64799	8/28/2014	AM	Sunny	R. Logalbo	No Assistant	SPP021	Y	N			
64798	8/28/2014	AM	Sunny	R. Logalbo	No Assistant	SPP020	Y	N			
64797	8/28/2014	AM	Sunny	R. Logalbo	No Assistant	SPP019	Y	N			
64796	8/28/2014	AM	Sunny	R. Logalbo	No Assistant	SPP243	Y	N			
64795	8/28/2014	AM	Sunny	R. Logalbo	No Assistant	SPP015	Y	N			
64794	8/28/2014	AM	Sunny	R. Logalbo	No Assistant	SPP017	Y	N			
64793	8/28/2014	AM	Sunny	R. Logalbo	No Assistant	SPP018	Y	N			
64792	8/28/2014	AM	Sunny	R. Logalbo	No Assistant	SPP014B	Y	N			
64791	8/28/2014	AM	Sunny	R. Logalbo	No Assistant	SPP014A	Y	N			
64790	8/28/2014	AM	Sunny	R. Logalbo	No Assistant	SPP237	Y	N			

[illegible]

64763	8/27/2014	AM	Sunny	R. Logalbo	No Assistant	SPP007	Y	N			
64762	8/27/2014	AM	Sunny	R. Logalbo	No Assistant	SPP008	Y	N			
64761	8/27/2014	AM	Sunny	R. Logalbo	No Assistant	SPP009	Y	N			
64760	8/27/2014	AM	Sunny	R. Logalbo	No Assistant	SPP010	Y	N			
64734	8/25/2014	AM	Sunny	R. Logalbo	No Assistant	SPP105	Y	N			
64758	8/25/2014	AM	Sunny	R. Logalbo	No Assistant	SPP215	Y	N			
64757	8/25/2014	AM	Sunny	R. Logalbo	No Assistant	SPP214	Y	N			
64756	8/25/2014	AM	Sunny	R. Logalbo	No Assistant	SPP213	Y	N			
64755	8/25/2014	AM	Sunny	R. Logalbo	No Assistant	SPP195	Y	N			
64754	8/25/2014	AM	Sunny	R. Logalbo	No Assistant	SPP013	Y	N			
64753	8/25/2014	AM	Sunny	R. Logalbo	No Assistant	SPP283	Y	N			
64752	8/25/2014	AM	Sunny	R. Logalbo	No Assistant	SPP279	Y	N			
64751	8/25/2014	AM	Sunny	R. Logalbo	No Assistant	SPP133	Y	N			
64750	8/25/2014	AM	Sunny	R. Logalbo	No Assistant	SPP209	Y	N			
64749	8/25/2014	AM	Sunny	R. Logalbo	No Assistant	SPP137	Y	N			
64748	8/25/2014	AM	Sunny	R. Logalbo	No Assistant	SPP136A	Y	N			
64747	8/25/2014	AM	Sunny	R. Logalbo	No Assistant	SPP135A	Y	N			
64746	8/25/2014	AM	Sunny	R. Logalbo	No Assistant	SPP132	Y	N			
64745	8/25/2014	AM	Sunny	R. Logalbo	No Assistant	SPP322	Y	N			
64744	8/25/2014	AM	Sunny	R. Logalbo	No Assistant	SPP211	Y	N			
64743	8/25/2014	AM	Sunny	R. Logalbo	No Assistant	SPP212	Y	N			
64742	8/25/2014	AM	Sunny	R. Logalbo	No Assistant	SPP291	Y	N			
64741	8/25/2014	AM	Sunny	R. Logalbo	No Assistant	SPP292	Y	N			
64740	8/25/2014	AM	Sunny	R. Logalbo	No Assistant	SPP293	Y	N			
64739	8/25/2014	AM	Sunny	R. Logalbo	No Assistant	SPP294	Y	N			
64738	8/25/2014	AM	Sunny	R. Logalbo	No Assistant	SPP295	Y	N			

[illegible]

64687	8/21/2014	AM	Cloudy	R. Logalbo	No Assistant	SPP104	Y	N			
64710	8/21/2014	AM	Cloudy	R. Logalbo	No Assistant	SPP145	Y	N			
64709	8/21/2014	AM	Cloudy	R. Logalbo	No Assistant	SPP138	Y	N			
64708	8/21/2014	AM	Cloudy	R. Logalbo	No Assistant	SPP326	Y	N			
64707	8/21/2014	AM	Cloudy	R. Logalbo	No Assistant	SPP282	Y	N			
64706	8/21/2014	AM	Cloudy	R. Logalbo	No Assistant	SPP281	Y	N			
64705	8/21/2014	AM	Cloudy	R. Logalbo	No Assistant	SPP097	Y	N			
64704	8/21/2014	AM	Cloudy	R. Logalbo	No Assistant	SPP097A	Y	N			
64703	8/21/2014	AM	Cloudy	R. Logalbo	No Assistant	SPP123C	Y	N			
64702	8/21/2014	AM	Cloudy	R. Logalbo	No Assistant	SPP123B	Y	N			
64701	8/21/2014	AM	Cloudy	R. Logalbo	No Assistant	SPP123A	Y	N			
64700	8/21/2014	AM	Cloudy	R. Logalbo	No Assistant	SPP208	Y	N			
64699	8/21/2014	AM	Cloudy	R. Logalbo	No Assistant	SPP124	Y	N			
64698	8/21/2014	AM	Cloudy	R. Logalbo	No Assistant	SPP125	Y	N			
64697	8/21/2014	AM	Cloudy	R. Logalbo	No Assistant	SPP125A	Y	N			
64696	8/21/2014	AM	Cloudy	R. Logalbo	No Assistant	SPP126	Y	N			
64695	8/21/2014	AM	Cloudy	R. Logalbo	No Assistant	SPP115	Y	N			
64694	8/21/2014	AM	Cloudy	R. Logalbo	No Assistant	SPP118	Y	N			
64693	8/21/2014	AM	Cloudy	R. Logalbo	No Assistant	SPP119	Y	N			
64692	8/21/2014	AM	Cloudy	R. Logalbo	No Assistant	SPP120	Y	N			
64691	8/21/2014	AM	Cloudy	R. Logalbo	No Assistant	SPP099	Y	N			
64690	8/21/2014	AM	Cloudy	R. Logalbo	No Assistant	SPP100	Y	N			
64689	8/21/2014	AM	Cloudy	R. Logalbo	No Assistant	SPP101	Y	N			
64688	8/21/2014	AM	Cloudy	R. Logalbo	No Assistant	SPP103	Y	N			
64666	8/20/2014	AM	Sunny	R. Logalbo	No Assistant	SPP217	Y	N			
64686	8/20/2014	AM	Sunny	R. Logalbo	No Assistant	SPP249	Y	N			

[illegible]

64659	8/19/2014	AM	Pt. Cloudy	R. Logalbo	No Assistant	SPP073	Y	N			
64658	8/19/2014	AM	Pt. Cloudy	R. Logalbo	No Assistant	SPP077	Y	N			
64657	8/19/2014	AM	Pt. Cloudy	R. Logalbo	No Assistant	SPP078	Y	N			
64656	8/19/2014	AM	Pt. Cloudy	R. Logalbo	No Assistant	SPP079	Y	N			
64655	8/19/2014	AM	Pt. Cloudy	R. Logalbo	No Assistant	SPP080	Y	N			
64654	8/19/2014	AM	Pt. Cloudy	R. Logalbo	No Assistant	SPP081	Y	N			
64653	8/19/2014	AM	Pt. Cloudy	R. Logalbo	No Assistant	SPP082	Y	N			
64652	8/19/2014	AM	Pt. Cloudy	R. Logalbo	No Assistant	SPP085	Y	N			
64651	8/19/2014	AM	Pt. Cloudy	R. Logalbo	No Assistant	SPP086	Y	N			
64650	8/19/2014	AM	Pt. Cloudy	R. Logalbo	No Assistant	SPP084	Y	N			
64649	8/19/2014	AM	Pt. Cloudy	R. Logalbo	No Assistant	SPP089	Y	N			
64648	8/19/2014	AM	Pt. Cloudy	R. Logalbo	No Assistant	SPP087	Y	N			
64647	8/19/2014	AM	Pt. Cloudy	R. Logalbo	No Assistant	SPP088	Y	N			
64646	8/19/2014	AM	Pt. Cloudy	R. Logalbo	No Assistant	SPP090	Y	N			
64645	8/19/2014	AM	Pt. Cloudy	R. Logalbo	No Assistant	SPP092	Y	N			
64644	8/19/2014	AM	Pt. Cloudy	R. Logalbo	No Assistant	SPP091	Y	N			
64643	8/19/2014	AM	Pt. Cloudy	R. Logalbo	No Assistant	SPP094	Y	N			
64642	8/19/2014	AM	Pt. Cloudy	R. Logalbo	No Assistant	SPP067	Y	N			
64641	8/19/2014	AM	Pt. Cloudy	R. Logalbo	No Assistant	SPP055	Y	N			
64640	8/19/2014	AM	Pt. Cloudy	R. Logalbo	No Assistant	SPP058	Y	N			
64639	8/19/2014	AM	Pt. Cloudy	R. Logalbo	No Assistant	SPP056	Y	N			
64638	8/19/2014	AM	Pt. Cloudy	R. Logalbo	No Assistant	SPP059	Y	N			
64637	8/19/2014	AM	Pt. Cloudy	R. Logalbo	No Assistant	SPP065	Y	N			
64636	8/19/2014	AM	Pt. Cloudy	R. Logalbo	No Assistant	SPP054	Y	N			
64635	8/19/2014	AM	Pt. Cloudy	R. Logalbo	No Assistant	SPP053	Y	N			
64634	8/19/2014	AM	Pt. Cloudy	R. Logalbo	No Assistant	SPP052	Y	N			

[illegible]

64599	8/15/2014	AM	Sunny	R. Logalbo	No Assistant	SPP156B	Y	N			
64598	8/15/2014	AM	Sunny	R. Logalbo	No Assistant	SPP339	Y	N			
64597	8/15/2014	AM	Sunny	R. Logalbo	No Assistant	SPP340	Y	N			
64596	8/15/2014	AM	Sunny	R. Logalbo	No Assistant	SPP341A	Y	N			
64595	8/15/2014	AM	Sunny	R. Logalbo	No Assistant	SPP342A	Y	N			
64594	8/15/2014	AM	Sunny	R. Logalbo	No Assistant	SPP342B	Y	N			
64612	8/15/2014	AM	Sunny	R. Logalbo	No Assistant	SPP336A	Y	N			
64613	8/15/2014	AM	Sunny	R. Logalbo	No Assistant	SPP163	Y	N			
64614	8/15/2014	AM	Sunny	R. Logalbo	No Assistant	SPP165B	Y	N			
64615	8/15/2014	AM	Sunny	R. Logalbo	No Assistant	SPP165	Y	N			
64616	8/15/2014	AM	Sunny	R. Logalbo	No Assistant	SPP164	Y	N			
64617	8/15/2014	AM	Sunny	R. Logalbo	No Assistant	SPP165A	Y	N			
64618	8/15/2014	AM	Sunny	R. Logalbo	No Assistant	SPP283	Y	N			
64575	8/14/2014	AM	Pt. Cloudy	R. Logalbo	No Assistant	SPP331	Y	N			
64593	8/14/2014	AM	Pt. Cloudy	R. Logalbo	No Assistant	SPP175	Y	N			
64592	8/14/2014	AM	Pt. Cloudy	R. Logalbo	No Assistant	SPP176	Y	N			
64591	8/14/2014	AM	Pt. Cloudy	R. Logalbo	No Assistant	SPP177	Y	N			
64590	8/14/2014	AM	Pt. Cloudy	R. Logalbo	No Assistant	SPP247	Y	N			
64589	8/14/2014	AM	Pt. Cloudy	R. Logalbo	No Assistant	SPP335B	Y	N			
64588	8/14/2014	AM	Pt. Cloudy	R. Logalbo	No Assistant	SPP335A	Y	N			
64587	8/14/2014	AM	Pt. Cloudy	R. Logalbo	No Assistant	SPP334B	Y	N			
64586	8/14/2014	AM	Pt. Cloudy	R. Logalbo	No Assistant	SPP334A	Y	N			
64585	8/14/2014	AM	Pt. Cloudy	R. Logalbo	No Assistant	SPP345	Y	N			
64584	8/14/2014	AM	Pt. Cloudy	R. Logalbo	No Assistant	SPP229	Y	N			
64583	8/14/2014	AM	Pt. Cloudy	R. Logalbo	No Assistant	SPP229A	Y	N			
64582	8/14/2014	AM	Pt. Cloudy	R. Logalbo	No Assistant	SPP333	Y	N			

64581	8/14/2014	AM	Pt. Cloudy	R. Logalbo	No Assistant	SPP170B	Y	N			
64580	8/14/2014	AM	Pt. Cloudy	R. Logalbo	No Assistant	SPP170A	Y	N			
64579	8/14/2014	AM	Pt. Cloudy	R. Logalbo	No Assistant	SPP178	Y	N			
64578	8/14/2014	AM	Pt. Cloudy	R. Logalbo	No Assistant	SPP179	Y	N			
64577	8/14/2014	AM	Pt. Cloudy	R. Logalbo	No Assistant	SPP332	Y	N			
64576	8/14/2014	AM	Pt. Cloudy	R. Logalbo	No Assistant	SPP180	Y	N			
64547	8/13/2014	AM	Pt. Sunny	R. Logalbo	No Assistant	SPP014B	Y	N			
64574	8/13/2014	AM	Pt. Sunny	R. Logalbo	No Assistant	SPP237	Y	N			
64573	8/13/2014	AM	Pt. Sunny	R. Logalbo	No Assistant	SPP236	Y	N			
64572	8/13/2014	AM	Pt. Sunny	R. Logalbo	No Assistant	SPP238	Y	N			
64571	8/13/2014	AM	Pt. Sunny	R. Logalbo	No Assistant	SPP235	Y	N			
64570	8/13/2014	AM	Pt. Sunny	R. Logalbo	No Assistant	SPP239	Y	N			
64569	8/13/2014	AM	Pt. Sunny	R. Logalbo	No Assistant	SPP241	Y	N			
64568	8/13/2014	AM	Pt. Sunny	R. Logalbo	No Assistant	SPP240	Y	N			
64567	8/13/2014	AM	Pt. Sunny	R. Logalbo	No Assistant	SPP234	Y	N			
64566	8/13/2014	AM	Pt. Sunny	R. Logalbo	No Assistant	SPP233	Y	N			
64565	8/13/2014	AM	Pt. Sunny	R. Logalbo	No Assistant	SPP232	Y	N			
64564	8/13/2014	AM	Pt. Sunny	R. Logalbo	No Assistant	SPP231	Y	N			
64563	8/13/2014	AM	Pt. Sunny	R. Logalbo	No Assistant	SPP230	Y	N			
64562	8/13/2014	AM	Pt. Sunny	R. Logalbo	No Assistant	SPP181	Y	N			
64561	8/13/2014	AM	Pt. Sunny	R. Logalbo	No Assistant	SPP182	Y	N			
64560	8/13/2014	AM	Pt. Sunny	R. Logalbo	No Assistant	SPP183	Y	N			
64559	8/13/2014	AM	Pt. Sunny	R. Logalbo	No Assistant	SPP024	Y	N			
64558	8/13/2014	AM	Pt. Sunny	R. Logalbo	No Assistant	SPP023	Y	N			
64557	8/13/2014	AM	Pt. Sunny	R. Logalbo	No Assistant	SPP296	Y	N			
64556	8/13/2014	AM	Pt. Sunny	R. Logalbo	No Assistant	SPP022	Y	N			

[illegible]

64529	8/12/2014	AM	Rain	R. Logalbo	No Assistant	SPP187	Y	N			
64528	8/12/2014	AM	Rain	R. Logalbo	No Assistant	SPP191	Y	N			
64527	8/12/2014	AM	Rain	R. Logalbo	No Assistant	SPP193	Y	N			
64526	8/12/2014	AM	Rain	R. Logalbo	No Assistant	SPP280	Y	N			
64525	8/12/2014	AM	Rain	R. Logalbo	No Assistant	SPP189	Y	N			
64524	8/12/2014	AM	Rain	R. Logalbo	No Assistant	SPP188	Y	N			
64503	8/8/2014	AM	Sunny	R. Logalbo	No Assistant	SPP105	Y	N			
64522	8/8/2014	AM	Sunny	R. Logalbo	No Assistant	SPP209	Y	N			
64521	8/8/2014	AM	Sunny	R. Logalbo	No Assistant	SPP137	Y	N			
64520	8/8/2014	AM	Sunny	R. Logalbo	No Assistant	SPP136A	Y	N			
64519	8/8/2014	AM	Sunny	R. Logalbo	No Assistant	SPP135A	Y	N			
64518	8/8/2014	AM	Sunny	R. Logalbo	No Assistant	SPP132	Y	N			
64517	8/8/2014	AM	Sunny	R. Logalbo	No Assistant	SPP131	Y	N			
64516	8/8/2014	AM	Sunny	R. Logalbo	No Assistant	SPP279	Y	N			
64515	8/8/2014	AM	Sunny	R. Logalbo	No Assistant	SPP133	Y	N			
64514	8/8/2014	AM	Sunny	R. Logalbo	No Assistant	SPP322	Y	N			
64513	8/8/2014	AM	Sunny	R. Logalbo	No Assistant	SPP211	Y	N			
64512	8/8/2014	AM	Sunny	R. Logalbo	No Assistant	SPP212	Y	N			
64511	8/8/2014	AM	Sunny	R. Logalbo	No Assistant	SPP291	Y	N			
64510	8/8/2014	AM	Sunny	R. Logalbo	No Assistant	SPP292	Y	N			
64509	8/8/2014	AM	Sunny	R. Logalbo	No Assistant	SPP293	Y	N			
64508	8/8/2014	AM	Sunny	R. Logalbo	No Assistant	SPP294	Y	N			
64507	8/8/2014	AM	Sunny	R. Logalbo	No Assistant	SPP295	Y	N			
64506	8/8/2014	AM	Sunny	R. Logalbo	No Assistant	SPP329	Y	N			
64505	8/8/2014	AM	Sunny	R. Logalbo	No Assistant	SPP106	Y	N			
64504	8/8/2014	AM	Sunny	R. Logalbo	No Assistant	SPP307	Y	N			

[illegible]

64477	8/7/2014	AM	Sunny	R. Logalbo	No Assistant	SPP281	Y	N			
64476	8/7/2014	AM	Sunny	R. Logalbo	No Assistant	SPP326	Y	N			
64475	8/7/2014	AM	Sunny	R. Logalbo	No Assistant	SPP097	Y	N			
64474	8/7/2014	AM	Sunny	R. Logalbo	No Assistant	SPP097A	Y	N			
64473	8/7/2014	AM	Sunny	R. Logalbo	No Assistant	SPP125A	Y	N			
64472	8/7/2014	AM	Sunny	R. Logalbo	No Assistant	SPP125	Y	N			
64471	8/7/2014	AM	Sunny	R. Logalbo	No Assistant	SPP126	Y	N			
64470	8/7/2014	AM	Sunny	R. Logalbo	No Assistant	SPP124	Y	N			
64469	8/7/2014	AM	Sunny	R. Logalbo	No Assistant	SPP208	Y	N			
64468	8/7/2014	AM	Sunny	R. Logalbo	No Assistant	SPP123A	Y	N			
64467	8/7/2014	AM	Sunny	R. Logalbo	No Assistant	SPP123B	Y	N			
64458	8/6/2014	AM	Sunny	R. Logalbo	No Assistant	SPP103	Y	N			
64465	8/6/2014	AM	Sunny	R. Logalbo	No Assistant	SPP115	Y	N			
64464	8/6/2014	AM	Sunny	R. Logalbo	No Assistant	SPP118	Y	N			
64463	8/6/2014	AM	Sunny	R. Logalbo	No Assistant	SPP119	Y	N			
64462	8/6/2014	AM	Sunny	R. Logalbo	No Assistant	SPP120	Y	N			
64461	8/6/2014	AM	Sunny	R. Logalbo	No Assistant	SPP099	Y	N			
64460	8/6/2014	AM	Sunny	R. Logalbo	No Assistant	SPP100	Y	N			
64459	8/6/2014	AM	Sunny	R. Logalbo	No Assistant	SPP101	Y	N			
64437	8/5/2014	AM	Sunny	R. Logalbo	No Assistant	SPP320	Y	N			
64457	8/5/2014	AM	Sunny	R. Logalbo	No Assistant	SPP104	Y	N			
64456	8/5/2014	AM	Sunny	R. Logalbo	No Assistant	SPP249	Y	N			
64455	8/5/2014	AM	Sunny	R. Logalbo	No Assistant	SPP152	Y	N			
64454	8/5/2014	AM	Sunny	R. Logalbo	No Assistant	SPP199B	Y	N			
64453	8/5/2014	AM	Sunny	R. Logalbo	No Assistant	SPP199A	Y	N			
64452	8/5/2014	AM	Sunny	R. Logalbo	No Assistant	SPP199C	Y	N			

[illegible]

64426	8/1/2014	AM	Sunny	R. Logalbo	No Assistant	SPP082	Y	N			
64427	8/1/2014	AM	Sunny	R. Logalbo	No Assistant	SPP085	Y	N			
64428	8/1/2014	AM	Sunny	R. Logalbo	No Assistant	SPP086	Y	N			
64429	8/1/2014	AM	Sunny	R. Logalbo	No Assistant	SPP084	Y	N			
64430	8/1/2014	AM	Sunny	R. Logalbo	No Assistant	SPP089	Y	N			
64431	8/1/2014	AM	Sunny	R. Logalbo	No Assistant	SPP087	Y	N			
64432	8/1/2014	AM	Sunny	R. Logalbo	No Assistant	SPP090	Y	N			
64433	8/1/2014	AM	Sunny	R. Logalbo	No Assistant	SPP091	Y	N			
64434	8/1/2014	AM	Sunny	R. Logalbo	No Assistant	SPP088	Y	N			
64435	8/1/2014	AM	Sunny	R. Logalbo	No Assistant	SPP092	Y	N			
64436	8/1/2014	AM	Sunny	R. Logalbo	No Assistant	SPP094	Y	N			
64393	7/31/2014	AM	Cloudy	R. Logalbo	No Assistant	SPP035	Y	N			
64413	7/31/2014	AM	Cloudy	R. Logalbo	No Assistant	SPP058	Y	N			
64412	7/31/2014	AM	Cloudy	R. Logalbo	No Assistant	SPP055	Y	N			
64411	7/31/2014	AM	Cloudy	R. Logalbo	No Assistant	SPP067	Y	N			
64410	7/31/2014	AM	Cloudy	R. Logalbo	No Assistant	SPP130	Y	N			
64409	7/31/2014	AM	Cloudy	R. Logalbo	No Assistant	SPP146	Y	N			
64408	7/31/2014	AM	Cloudy	R. Logalbo	No Assistant	SPP056	Y	N			
64407	7/31/2014	AM	Cloudy	R. Logalbo	No Assistant	SPP128	Y	N			
64406	7/31/2014	AM	Cloudy	R. Logalbo	No Assistant	SPP054	Y	N			
64405	7/31/2014	AM	Cloudy	R. Logalbo	No Assistant	SPP059	Y	N			
64404	7/31/2014	AM	Cloudy	R. Logalbo	No Assistant	SPP065	Y	N			
64403	7/31/2014	AM	Cloudy	R. Logalbo	No Assistant	SPP053	Y	N			
64402	7/31/2014	AM	Cloudy	R. Logalbo	No Assistant	SPP052	Y	N			
64401	7/31/2014	AM	Cloudy	R. Logalbo	No Assistant	SPP051	Y	N			
64400	7/31/2014	AM	Cloudy	R. Logalbo	No Assistant	SPP051A	Y	N			

[illegible]

64373	7/24/2014	AM	Sunny	R. Logalbo	No Assistant	SPP165A	Y	N			
64372	7/24/2014	AM	Sunny	R. Logalbo	No Assistant	SPP165	Y	N			
64371	7/24/2014	AM	Sunny	R. Logalbo	No Assistant	SPP164	Y	N			
64370	7/24/2014	AM	Sunny	R. Logalbo	No Assistant	SPP165B	Y	N			
64369	7/24/2014	AM	Sunny	R. Logalbo	No Assistant	SPP336A	Y	N			
64368	7/24/2014	AM	Sunny	R. Logalbo	No Assistant	SPP336B	Y	N			
64367	7/24/2014	AM	Sunny	R. Logalbo	No Assistant	SPP175	Y	N			
64366	7/24/2014	AM	Sunny	R. Logalbo	No Assistant	SPP176	Y	N			
64365	7/24/2014	AM	Sunny	R. Logalbo	No Assistant	SPP177	Y	N			
64364	7/24/2014	AM	Sunny	R. Logalbo	No Assistant	SPP247	Y	N			
64363	7/24/2014	AM	Sunny	R. Logalbo	No Assistant	SPP335B	Y	N			
64362	7/24/2014	AM	Sunny	R. Logalbo	No Assistant	SPP335A	Y	N			
64361	7/24/2014	AM	Sunny	R. Logalbo	No Assistant	SPP334A	Y	N			
64360	7/24/2014	AM	Sunny	R. Logalbo	No Assistant	SPP334B	Y	N			
64359	7/24/2014	AM	Sunny	R. Logalbo	No Assistant	SPP229A	Y	N			
64358	7/24/2014	AM	Sunny	R. Logalbo	No Assistant	SPP345	Y	N			
64357	7/24/2014	AM	Sunny	R. Logalbo	No Assistant	SPP229	Y	N			
64356	7/24/2014	AM	Sunny	R. Logalbo	No Assistant	SPP333	Y	N			
64355	7/24/2014	AM	Sunny	R. Logalbo	No Assistant	SPP170B	Y	N			
64354	7/24/2014	AM	Sunny	R. Logalbo	No Assistant	SPP170A	Y	N			
64353	7/24/2014	AM	Sunny	R. Logalbo	No Assistant	SPP179	Y	N			
64352	7/24/2014	AM	Sunny	R. Logalbo	No Assistant	SPP332	Y	N			
64351	7/24/2014	AM	Sunny	R. Logalbo	No Assistant	SPP180	Y	N			
64320	7/23/2014	AM	Sunny	R. Logalbo	No Assistant	SPP296	Y	N			
64349	7/23/2014	AM	Sunny	R. Logalbo	No Assistant	SPP244	Y	N			
64348	7/23/2014	AM	Sunny	R. Logalbo	No Assistant	SPP245	Y	N			

[illegible]

64321	7/23/2014	AM	Sunny	R. Logalbo	No Assistant	SPP023	Y	N			
64295	7/22/2014	AM	Sunny	R. Logalbo	No Assistant	SPP190	Y	N			
64319	7/22/2014	AM	Sunny	R. Logalbo	No Assistant	SPP283	Y	N			
64318	7/22/2014	AM	Sunny	R. Logalbo	No Assistant	SPP013	Y	N			
64317	7/22/2014	AM	Sunny	R. Logalbo	No Assistant	SPP195	Y	N			
64316	7/22/2014	AM	Sunny	R. Logalbo	No Assistant	SPP213	Y	N			
64315	7/22/2014	AM	Sunny	R. Logalbo	No Assistant	SPP214	Y	N			
64314	7/22/2014	AM	Sunny	R. Logalbo	No Assistant	SPP215	Y	N			
64313	7/22/2014	AM	Sunny	R. Logalbo	No Assistant	SPP011	Y	N			
64312	7/22/2014	AM	Sunny	R. Logalbo	No Assistant	SPP010	Y	N			
64311	7/22/2014	AM	Sunny	R. Logalbo	No Assistant	SPP009	Y	N			
64310	7/22/2014	AM	Sunny	R. Logalbo	No Assistant	SPP185	Y	N			
64309	7/22/2014	AM	Sunny	R. Logalbo	No Assistant	SPP184	Y	N			
64308	7/22/2014	AM	Sunny	R. Logalbo	No Assistant	SPP008	Y	N			
64307	7/22/2014	AM	Sunny	R. Logalbo	No Assistant	SPP007	Y	N			
64306	7/22/2014	AM	Sunny	R. Logalbo	No Assistant	SPP005	Y	N			
64305	7/22/2014	AM	Sunny	R. Logalbo	No Assistant	SPP186	Y	N			
64304	7/22/2014	AM	Sunny	R. Logalbo	No Assistant	SPP004	Y	N			
64303	7/22/2014	AM	Sunny	R. Logalbo	No Assistant	SPP003	Y	N			
64302	7/22/2014	AM	Sunny	R. Logalbo	No Assistant	SPP001	Y	N			
64301	7/22/2014	AM	Sunny	R. Logalbo	No Assistant	SPP193	Y	N			
64300	7/22/2014	AM	Sunny	R. Logalbo	No Assistant	SPP187	Y	N			
64299	7/22/2014	AM	Sunny	R. Logalbo	No Assistant	SPP191	Y	N			
64298	7/22/2014	AM	Sunny	R. Logalbo	No Assistant	SPP280	Y	N			
64297	7/22/2014	AM	Sunny	R. Logalbo	No Assistant	SPP188	Y	N			
64296	7/22/2014	AM	Sunny	R. Logalbo	No Assistant	SPP189	Y	N			

[illegible]

64269	7/17/2014	AM	Sunny	R. Logalbo	No Assistant	SPP227	Y	N			
64268	7/17/2014	AM	Sunny	R. Logalbo	No Assistant	SPP226	Y	N			
64267	7/17/2014	AM	Sunny	R. Logalbo	No Assistant	SPP225	Y	N			
64266	7/17/2014	AM	Sunny	R. Logalbo	No Assistant	SPP224	Y	N			
64265	7/17/2014	AM	Sunny	R. Logalbo	No Assistant	SPP311	Y	N			
64264	7/17/2014	AM	Sunny	R. Logalbo	No Assistant	SPP220	Y	N			
64263	7/17/2014	AM	Sunny	R. Logalbo	No Assistant	SPP221	Y	N			
64262	7/17/2014	AM	Sunny	R. Logalbo	No Assistant	SPP222	Y	N			
64261	7/17/2014	AM	Sunny	R. Logalbo	No Assistant	SPP109	Y	N			
64260	7/17/2014	AM	Sunny	R. Logalbo	No Assistant	SPP121	Y	N			
64259	7/17/2014	AM	Sunny	R. Logalbo	No Assistant	SPP310	Y	N			
64258	7/17/2014	AM	Sunny	R. Logalbo	No Assistant	SPP309	Y	N			
64257	7/17/2014	AM	Sunny	R. Logalbo	No Assistant	SPP308B	Y	N			
64256	7/17/2014	AM	Sunny	R. Logalbo	No Assistant	SPP308A	Y	N			
64255	7/17/2014	AM	Sunny	R. Logalbo	No Assistant	SPP308	Y	N			
64254	7/17/2014	AM	Sunny	R. Logalbo	No Assistant	SPP114	Y	N			
64209	7/16/2014	AM	Sunny	R. Logalbo	No Assistant	SPP217	Y	N			
64252	7/16/2014	AM	Sunny	R. Logalbo	No Assistant	SPP282	Y	N			
64251	7/16/2014	AM	Sunny	R. Logalbo	No Assistant	SPP281	Y	N			
64250	7/16/2014	AM	Sunny	R. Logalbo	No Assistant	SPP326	Y	N			
64249	7/16/2014	AM	Sunny	R. Logalbo	No Assistant	SPP138	Y	N			
64248	7/16/2014	AM	Sunny	R. Logalbo	No Assistant	SPP145	Y	N			
64247	7/16/2014	AM	Sunny	R. Logalbo	No Assistant	SPP123C	Y	N			
64246	7/16/2014	AM	Sunny	R. Logalbo	No Assistant	SPP123B	Y	N			
64245	7/16/2014	AM	Sunny	R. Logalbo	No Assistant	SPP123A	Y	N			
64244	7/16/2014	AM	Sunny	R. Logalbo	No Assistant	SPP208	Y	N			

[illegible]

64217	7/16/2014	AM	Sunny	R. Logalbo	No Assistant	SPP218	Y	N			
64216	7/16/2014	AM	Sunny	R. Logalbo	No Assistant	SPP320	Y	N			
64215	7/16/2014	AM	Sunny	R. Logalbo	No Assistant	SPP319	Y	N			
64214	7/16/2014	AM	Sunny	R. Logalbo	No Assistant	SPP318	Y	N			
64213	7/16/2014	AM	Sunny	R. Logalbo	No Assistant	SPP317	Y	N			
64212	7/16/2014	AM	Sunny	R. Logalbo	No Assistant	SPP316	Y	N			
64211	7/16/2014	AM	Sunny	R. Logalbo	No Assistant	SPP315	Y	N			
64210	7/16/2014	AM	Sunny	R. Logalbo	No Assistant	SPP314	Y	N			
64186	7/15/2014	AM	Rain	R. Logalbo	No Assistant	SPP069	Y	N			
64208	7/15/2014	AM	Rain	R. Logalbo	No Assistant	SPP087	Y	N			
64207	7/15/2014	AM	Rain	R. Logalbo	No Assistant	SPP089	Y	N			
64206	7/15/2014	AM	Rain	R. Logalbo	No Assistant	SPP088	Y	N			
64205	7/15/2014	AM	Rain	R. Logalbo	No Assistant	SPP090	Y	N			
64204	7/15/2014	AM	Rain	R. Logalbo	No Assistant	SPP092	Y	N			
64203	7/15/2014	AM	Rain	R. Logalbo	No Assistant	SPP091	Y	N			
64202	7/15/2014	AM	Rain	R. Logalbo	No Assistant	SPP094	Y	N			
64201	7/15/2014	AM	Rain	R. Logalbo	No Assistant	SPP084	Y	N			
64200	7/15/2014	AM	Rain	R. Logalbo	No Assistant	SPP086	Y	N			
64199	7/15/2014	AM	Rain	R. Logalbo	No Assistant	SPP085	Y	N			
64198	7/15/2014	AM	Rain	R. Logalbo	No Assistant	SPP082	Y	N			
64197	7/15/2014	AM	Rain	R. Logalbo	No Assistant	SPP081	Y	N			
64196	7/15/2014	AM	Rain	R. Logalbo	No Assistant	SPP079	Y	N			
64195	7/15/2014	AM	Rain	R. Logalbo	No Assistant	SPP078	Y	N			
64194	7/15/2014	AM	Rain	R. Logalbo	No Assistant	SPP080	Y	N			
64193	7/15/2014	AM	Rain	R. Logalbo	No Assistant	SPP077	Y	N			
64192	7/15/2014	AM	Rain	R. Logalbo	No Assistant	SPP073	Y	N			

[illegible]

64165	7/11/2014	AM	Rain	R. Logalbo	No Assistant	SPP036	Y	N			
64164	7/11/2014	AM	Rain	R. Logalbo	No Assistant	SPP035	Y	N			
64163	7/11/2014	AM	Rain	R. Logalbo	No Assistant	SPP206B	Y	N			
64119	7/10/2014	AM	Sunny	R. Logalbo	No Assistant	SPP331	Y	N			
64161	7/10/2014	AM	Sunny	R. Logalbo	No Assistant	SPP304	Y	N			
64160	7/10/2014	AM	Sunny	R. Logalbo	No Assistant	SPP342B	Y	N			
64159	7/10/2014	AM	Sunny	R. Logalbo	No Assistant	SPP342A	Y	N			
64158	7/10/2014	AM	Sunny	R. Logalbo	No Assistant	SPP156	Y	N			
64157	7/10/2014	AM	Sunny	R. Logalbo	No Assistant	SPP156A	Y	N			
64156	7/10/2014	AM	Sunny	R. Logalbo	No Assistant	SPP157	Y	N			
64155	7/10/2014	AM	Sunny	R. Logalbo	No Assistant	SPP341A	Y	N			
64154	7/10/2014	AM	Sunny	R. Logalbo	No Assistant	SPP340	Y	N			
64153	7/10/2014	AM	Sunny	R. Logalbo	No Assistant	SPP339	Y	N			
64152	7/10/2014	AM	Sunny	R. Logalbo	No Assistant	SPP338	Y	N			
64151	7/10/2014	AM	Sunny	R. Logalbo	No Assistant	SPP200A	Y	N			
64150	7/10/2014	AM	Sunny	R. Logalbo	No Assistant	SPP200B	Y	N			
64149	7/10/2014	AM	Sunny	R. Logalbo	No Assistant	SPP201	Y	N			
64148	7/10/2014	AM	Sunny	R. Logalbo	No Assistant	SPP202	Y	N			
64147	7/10/2014	AM	Sunny	R. Logalbo	No Assistant	SPP203	Y	N			
64146	7/10/2014	AM	Sunny	R. Logalbo	No Assistant	SPP204	Y	N			
64145	7/10/2014	AM	Sunny	R. Logalbo	No Assistant	SPP164	Y	N			
64144	7/10/2014	AM	Sunny	R. Logalbo	No Assistant	SPP165	Y	N			
64143	7/10/2014	AM	Sunny	R. Logalbo	No Assistant	SPP336B	Y	N			
64142	7/10/2014	AM	Sunny	R. Logalbo	No Assistant	SPP336A	Y	N			
64141	7/10/2014	AM	Sunny	R. Logalbo	No Assistant	SPP165B	Y	N			
64140	7/10/2014	AM	Sunny	R. Logalbo	No Assistant	SPP165A	Y	N			

64139	7/10/2014	AM	Sunny	R. Logalbo	No Assistant	SPP244	Y	N			
64138	7/10/2014	AM	Sunny	R. Logalbo	No Assistant	SPP245	Y	N			
64137	7/10/2014	AM	Sunny	R. Logalbo	No Assistant	SPP175	Y	N			
64136	7/10/2014	AM	Sunny	R. Logalbo	No Assistant	SPP176	Y	N			
64135	7/10/2014	AM	Sunny	R. Logalbo	No Assistant	SPP177	Y	N			
64134	7/10/2014	AM	Sunny	R. Logalbo	No Assistant	SPP334B	Y	N			
64133	7/10/2014	AM	Sunny	R. Logalbo	No Assistant	SPP334A	Y	N			
64132	7/10/2014	AM	Sunny	R. Logalbo	No Assistant	SPP335B	Y	N			
64131	7/10/2014	AM	Sunny	R. Logalbo	No Assistant	SPP335A	Y	N			
64130	7/10/2014	AM	Sunny	R. Logalbo	No Assistant	SPP247	Y	N			
64129	7/10/2014	AM	Sunny	R. Logalbo	No Assistant	SPP345	Y	N			
64128	7/10/2014	AM	Sunny	R. Logalbo	No Assistant	SPP229A	Y	N			
64127	7/10/2014	AM	Sunny	R. Logalbo	No Assistant	SPP229	Y	N			
64126	7/10/2014	AM	Sunny	R. Logalbo	No Assistant	SPP333	Y	N			
64125	7/10/2014	AM	Sunny	R. Logalbo	No Assistant	SPP170B	Y	N			
64124	7/10/2014	AM	Sunny	R. Logalbo	No Assistant	SPP170A	Y	N			
64123	7/10/2014	AM	Sunny	R. Logalbo	No Assistant	SPP178	Y	N			
64122	7/10/2014	AM	Sunny	R. Logalbo	No Assistant	SPP179	Y	N			
64121	7/10/2014	AM	Sunny	R. Logalbo	No Assistant	SPP332	Y	N			
64120	7/10/2014	AM	Sunny	R. Logalbo	No Assistant	SPP180	Y	N			
64091	7/8/2014	AM	Pt. Cloudy	R. Logalbo	No Assistant	SPP183	Y	N			
64118	7/8/2014	AM	Pt. Cloudy	R. Logalbo	No Assistant	SPP296	Y	N			
64117	7/8/2014	AM	Pt. Cloudy	R. Logalbo	No Assistant	SPP023	Y	N			
64116	7/8/2014	AM	Pt. Cloudy	R. Logalbo	No Assistant	SPP024	Y	N			
64115	7/8/2014	AM	Pt. Cloudy	R. Logalbo	No Assistant	SPP022	Y	N			
64114	7/8/2014	AM	Pt. Cloudy	R. Logalbo	No Assistant	SPP021	Y	N			

[illegible]

64071	7/1/2014	AM	Sunny	R. Logalbo	No Assistant	SPP190	Y	N			
64072	7/1/2014	AM	Sunny	R. Logalbo	No Assistant	SPP189	Y	N			
64073	7/1/2014	AM	Sunny	R. Logalbo	No Assistant	SPP188	Y	N			
64074	7/1/2014	AM	Sunny	R. Logalbo	No Assistant	SPP001	Y	N			
64075	7/1/2014	AM	Sunny	R. Logalbo	No Assistant	SPP003	Y	N			
64076	7/1/2014	AM	Sunny	R. Logalbo	No Assistant	SPP004	Y	N			
64077	7/1/2014	AM	Sunny	R. Logalbo	No Assistant	SPP005	Y	N			
64078	7/1/2014	AM	Sunny	R. Logalbo	No Assistant	SPP007	Y	N			
64079	7/1/2014	AM	Sunny	R. Logalbo	No Assistant	SPP186	Y	N			
64080	7/1/2014	AM	Sunny	R. Logalbo	No Assistant	SPP185	Y	N			
64081	7/1/2014	AM	Sunny	R. Logalbo	No Assistant	SPP184	Y	N			
64082	7/1/2014	AM	Sunny	R. Logalbo	No Assistant	SPP008	Y	N			
64083	7/1/2014	AM	Sunny	R. Logalbo	No Assistant	SPP009	Y	N			
64084	7/1/2014	AM	Sunny	R. Logalbo	No Assistant	SPP010	Y	N			
64085	7/1/2014	AM	Sunny	R. Logalbo	No Assistant	SPP215	Y	N			
64086	7/1/2014	AM	Sunny	R. Logalbo	No Assistant	SPP214	Y	N			
64087	7/1/2014	AM	Sunny	R. Logalbo	No Assistant	SPP011	Y	N			
64088	7/1/2014	AM	Sunny	R. Logalbo	No Assistant	SPP213	Y	N			
64089	7/1/2014	AM	Sunny	R. Logalbo	No Assistant	SPP195	Y	N			
64090	7/1/2014	AM	Sunny	R. Logalbo	No Assistant	SPP013	Y	N			

Show 10 records per page

Filter

SPP ID: View All ▼

Date: From 07/01/2014 To 1/1/2015

Inspector: View All ▼

Apply Filter

Attachment E to the Semi-Annual Status Report: March 2015

Model Modifications

Model Modifications

Revisions based on survey data:

- 1) SPP51: Weir crest height lowered from 575.71 to 575.3.
- 2) SPP67: Weir crest height was raised from 575.85 to 577.62. Upstream pipe invert was raised from 572.87 to 573.4. U/S invert of pipe 10495 was 572.87, raised to 573.4.
- 3) SPP132: Weir crest height was raised from 575.55 to 577.1.
- 4) SPP149: Weir crest height was raised from 593.98 to 594.52.
- 5) SPP150: Weir crest height was raised from 596.53 to 597.28.
- 6) SPP151: Weir crest height was raised from 608.01 to 608.51. Downstream invert of conduit 13305b was 604.52, lowered to 604.11. At Model Node 12738D U/S invert of conduit 13305b, and D/S invert of conduit 13305a lowered from 604.64 to 604.29
- 7) SPP199a: Weir crest height lowered from 608.75 to 608.34. Node 13008 invert and U/S invert of 13009 were 606.71, lowered to 605.72. Downstream invert of model node 13065 was lowered from 606.71 to 606.13.
- 8) SPP199c: Weir crest height was lowered from 606.8 to 606.48. Model Node 12819 invert and upstream invert of CHME12820 were lowered from 604.8 to 604.44. Downstream invert of CHME12820 was raise from 604.45 to 604.09. Downstream invert of 13114b was lowered from 605.63 to 605.28.
- 9) SPP248: Weir crest height was lowered from 607.25 to 606.81. Model Node SPP248w invert and upstream invert of pipe 16134 were raised from 601.7 to 602.33.
- 10) SPP249: Weir crest height was raised from 623.78 to 624.06.
- 11) SPP282: Upstream invert of pipe SPP282w*.1 was lowered from 578.95 to 578.45.
- 12) SPP318: Weir crest height was raised from 582.25 to 582.66.
- 13) SPP319: Weir crest height was lowered from 582.95 to 582.50. Upstream invert of conduit 13195 and Node SPP319w were lowered from 580.45 to 579.75.

Revisions Based on Completed Construction:

- 1) SPP 206A&B - Raised weir to 576.00
- 2) SPP 36- Contract 4 - Inserted nodes DUMSPP36 (rim 588.47, invert 578.68) and 15741.1 (rim 588.98, invert 576.25) downstream of node 15741. Added transverse WEIR1 (SPP36Weir) from node DUMSPP36 to node 1571.1 with length of 6 ft., crown of 583.75, crest of 581.25, and discharge coefficient of 3.1. Updated link 15744.1 from node 15741.1 to node 15298 to have a length of 36.9 ft and lowered upstream invert to 576.89 from 578.69. Updated link from node 15741 to node DUMSPP36 to have diameter of 2.5 ft., a length of 35 ft., upstream invert of 578.69, and downstream invert of 578.68.
- 3) SPP 35 - Contract 3 - Incorporated 150' 96" dia. Storage, Genesee trunk weir @ 582.35 8' long, SPP 35 weir 583.42 4' long, restricted outlets to Swan Trunk 18" dia.
- 4) SPP 165A - Raised weir 165WEIR 9" to weir crest elevation 653.27.